

A woman in a white and black patterned dress stands in a lush tropical landscape. To her left is a traditional thatched-roof hut. A large palm tree is positioned behind her, and the sky is bright blue with light clouds. The scene is filled with various tropical plants and a grassy hillside in the background.

VARSHA

Tropicana

A woman in a white and black patterned dress stands in a tropical landscape. To her left is a large thatched hut with a steep roof. A tall palm tree stands behind her, with a decorative feather-like symbol at its top. The background shows a lush green hillside with other thatched huts and tropical vegetation under a blue sky with light clouds.

VARSHA

Tropicana



TC#01





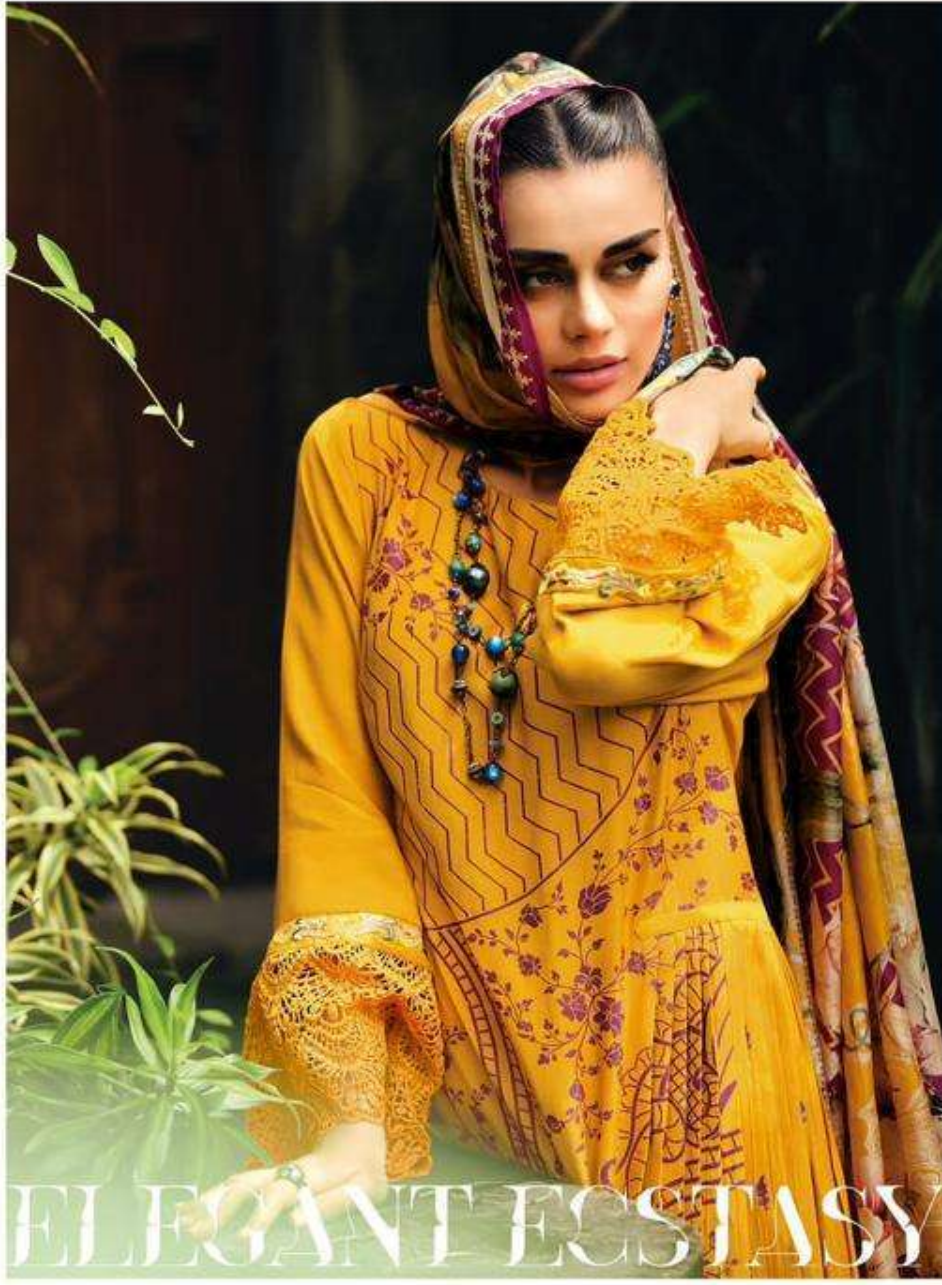
TC#02



FEEL COMFORT















TC#04

TC#05





DAINTY DETAILS





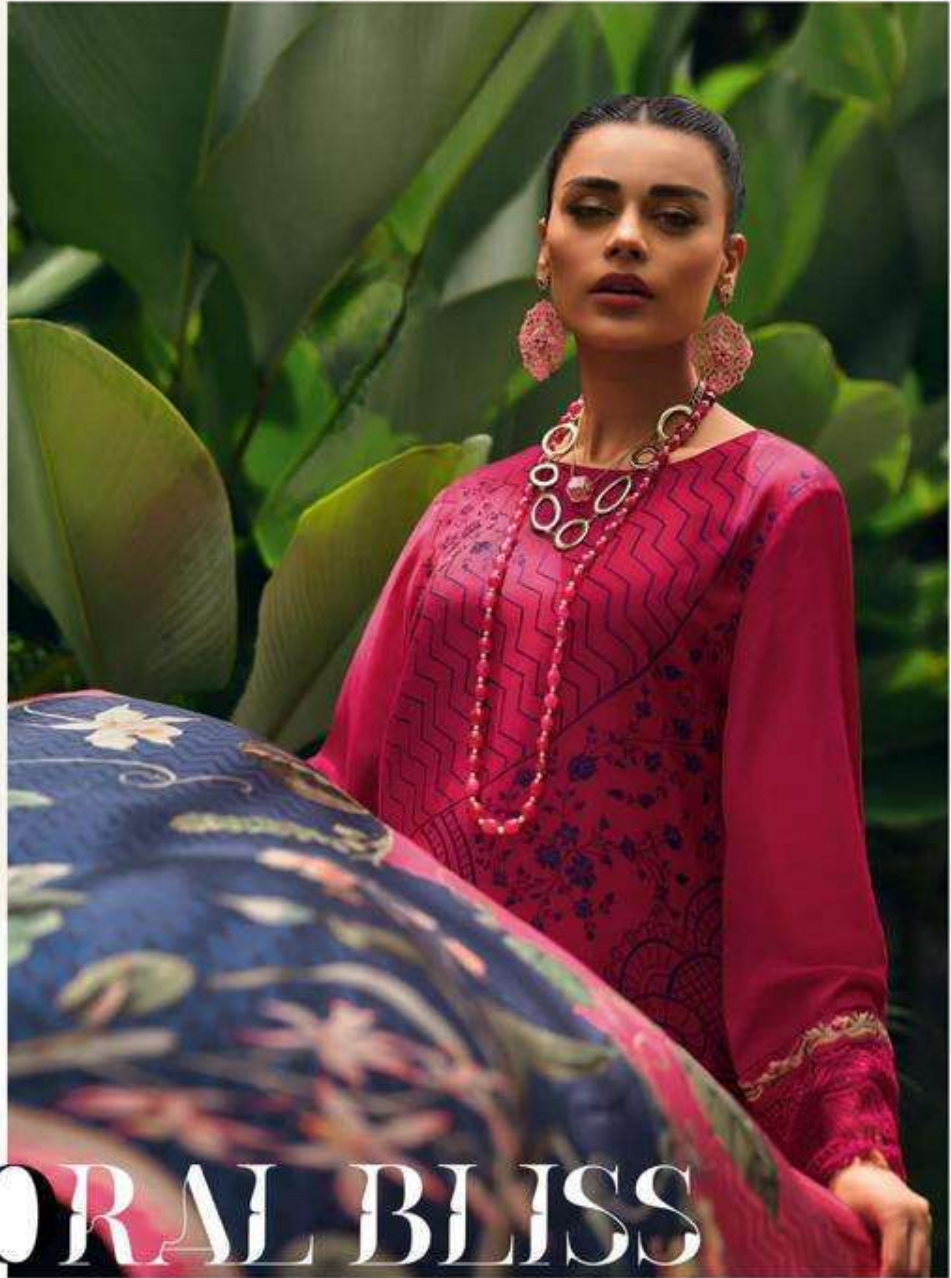


TC#06









FLORAL BLISS



DESIGN	PRICE	DESCRIPTION
TC-01	2580/-	TOP
TC-02	2580/-	VISCOSE MUSLIN WOVEN WITH EMBROIDERY BORDER & LACE
TC-03	2580/-	BOTTOM
TC-04	2580/-	COTTON SILK SOLID WITH EMBROIDERY PATCH
TC-05	2580/-	DUPATTA
TC-06	2580/-	SILK TABY DIGITALLY PRINTED AND TASSEL

TOTAL AMOUNT :15,480/-+GST
 TOTAL PIECES : 6





Tropicana



TC#01



TC#02



TC#03



TC#04



TC#05



TC#06