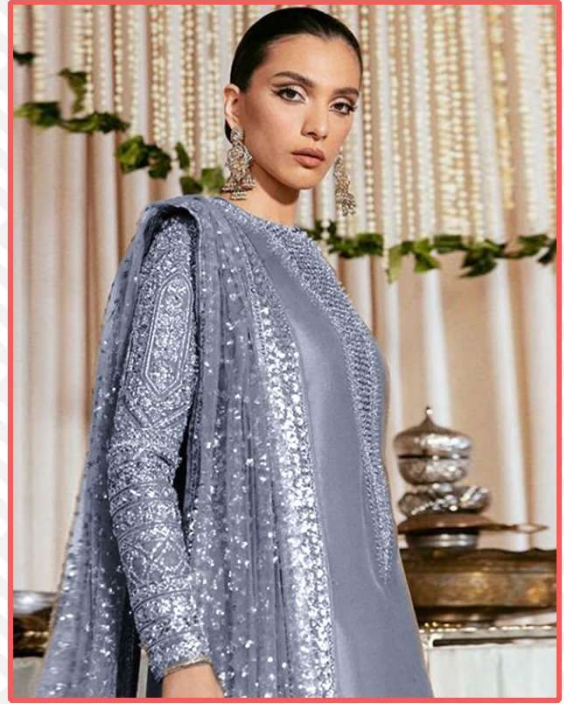




D.no-184-K (Organza)



-:TOP:-

Organza Embroidery.

-:BOTTAM/INNER:-

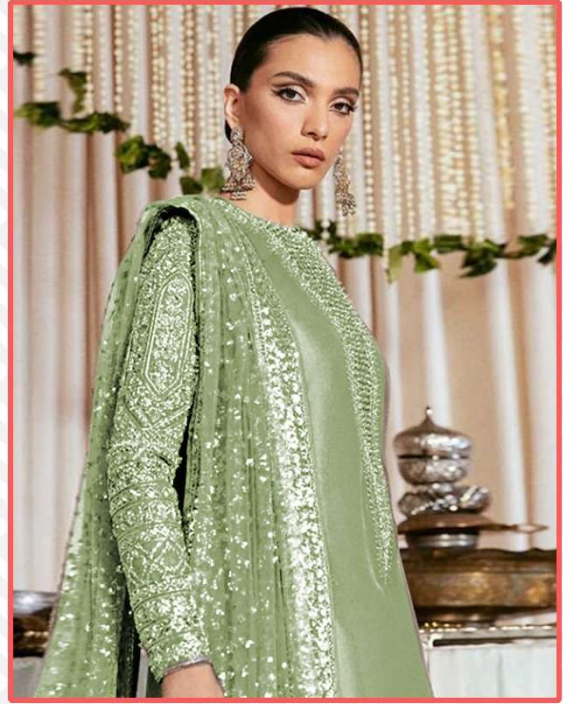
Santoon.

-:DUPATTA:-

Heavy Embroidery With Four Side Lace.



D.no-184-I (Organza)



-:TOP:-

Organza Embroidery.

-:BOTTAM/INNER:-

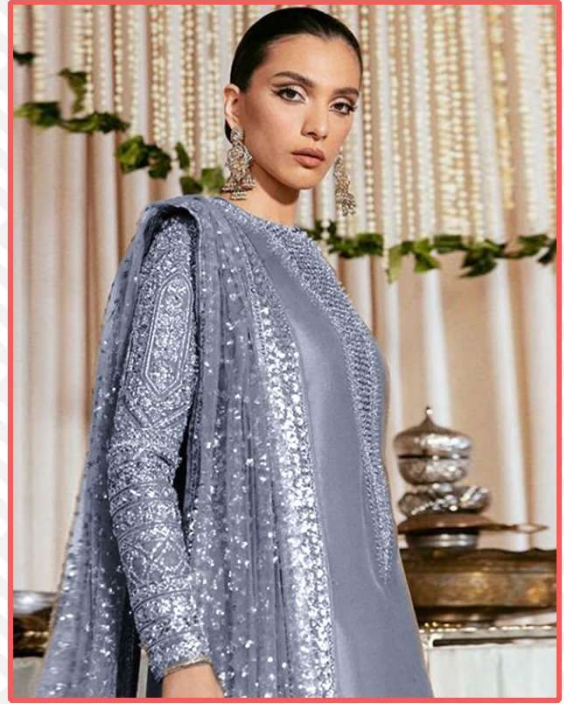
Santoon.

-:DUPATTA:-

Heavy Embroidery With Four Side Lace.



D.no-184-K (Organza)



-:TOP:-

Organza Embroidery.

-:BOTTAM/INNER:-

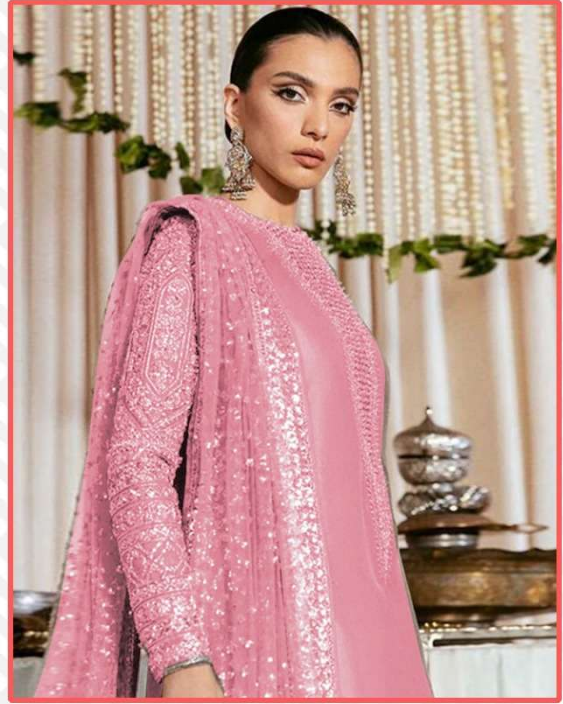
Santoon.

-:DUPATTA:-

Heavy Embroidery With Four Side Lace.



D.no-184-L (Organza)



-:TOP:-

Organza Embroidery.

-:BOTTAM/INNER:-

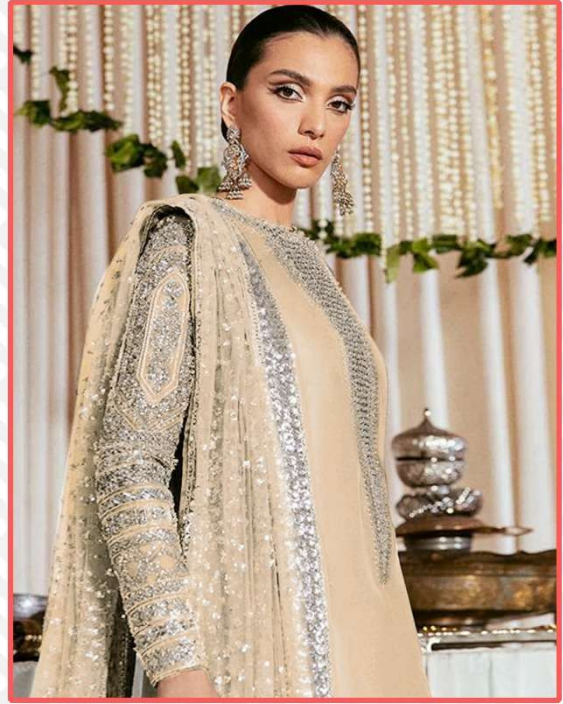
Santoon.

-:DUPATTA:-

Heavy Embroidery With Four Side Lace.



D.no-184-J (Organza)



-:TOP:-

Organza Embroidery.

-:BOTTAM/INNER:-

Santoon.

-:DUPATTA:-

Heavy Embroidery With Four Side Lace.



D.no-184-I



D.no-184-J



D.no-184-K



D.no-184-L

-:TOP:-
Organza Embroidery.

-:BOTTAM/INNER:-
Santoon

-:DUPATTA:-
Heavy Embroidery With Four
Side Lace.

NOOR



DS-157 D

**Top- ORGANZA HEAVY EMBROIDERY
WITH KHATLI HAND WORK**

Bottom/Iner- SANTOON

Dupatta- ORGANZA EMBROIDERY

WASHING INSTRUCTIONS
DO NOT USE HOT WATER OR DRY CLEANING ORGANZAS
BEFORE DRYING ORGANZAS SHOULD BE SOAKED IN WATER
ALL COMPONENTS SHOULD BE SEPARATED
DO NOT USE HOT IRON IN PROXIMITY TO DRYING ORGANZAS
WASH ORGANZAS AND WHITE FABRICS SEPARATELY
NON-COLORED FABRICS SHOULD BE WASHED IN COLD WATER
EXTRA CARE IN WASHING AND DRYING ARE NOT INCLUDED



**Top- ORGANZA HEAVY EMBROIDERY
WITH KHATLI HAND WORK**
Bottom/ Iner- SANTOON
Dupatta- ORGANZA EMBROIDERY

NOOR



DS-157-A



DS-157-B

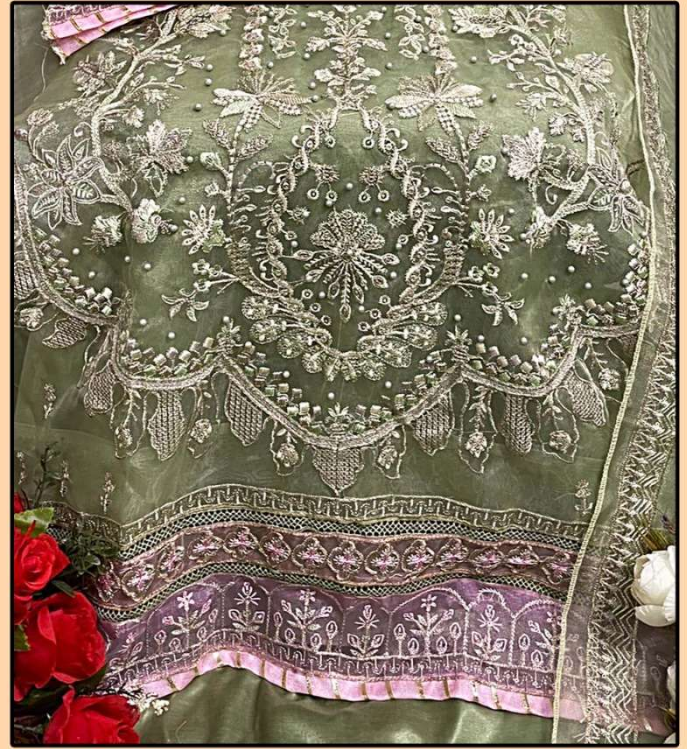


DS-157-C



DS-157-D

NOOR



DS-157

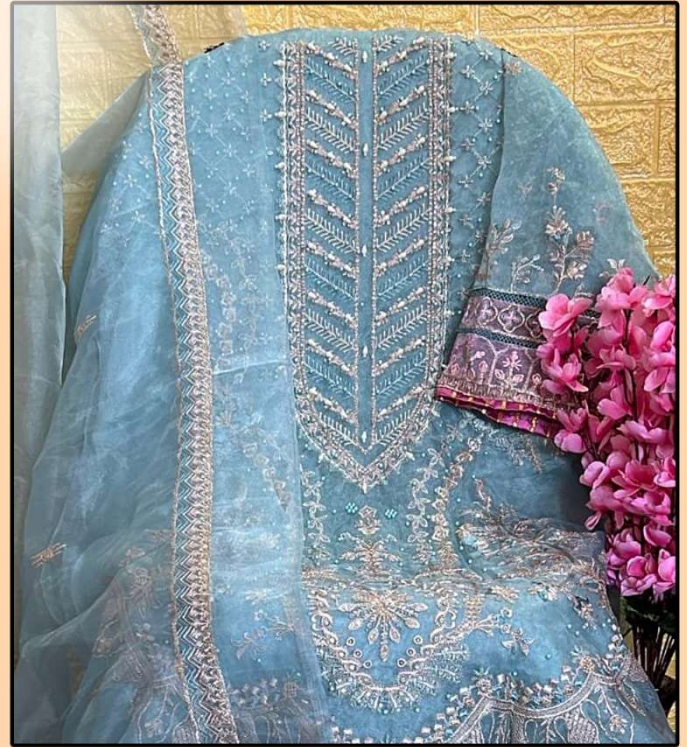
**Top- ORGANZA HEAVY EMBROIDERY
WITH KHATLI HAND WORK**

Bottom/Iner- SANTOON

Dupatta- ORGANZA EMBROIDERY

WASHING INSTRUCTIONS
DO NOT USE HOT WATER OR DRY CLEANING ORGANZAS
BEFORE DYEING OR BLEACHING SHOULD BE DONE IN WATER
ALL COMPONENTS SHOULD BE WASHED SEPARATELY
DO NOT USE HOT IRON IN PROXIMITY TO DRYER OR IRON BOARD
WASH CLOTHES AND WHITE FABRICS SEPARATELY
IRON CLOTHES AT MODERATE TEMPERATURES ONLY ON PINK AND LIGHT COLORFAST
EXTRA CARE WASHING AND DRYING ARE NOT INCLUDED

NOOR



DS-157 B

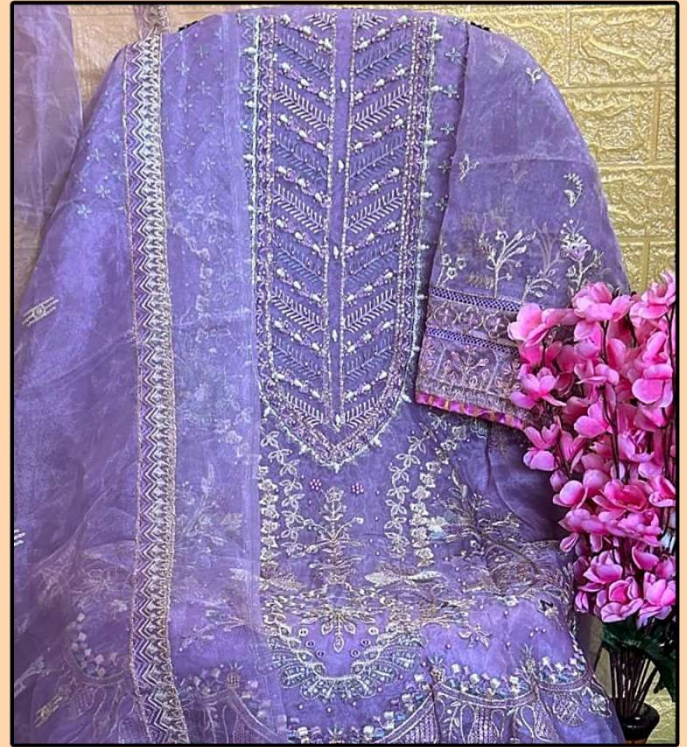
**Top- ORGANZA HEAVY EMBROIDERY
WITH KHATLI HAND WORK**

Bottom/Iner- SANTOON

Dupatta- ORGANZA EMBROIDERY

WASHING INSTRUCTIONS
DO NOT USE HOT WATER OR DRY CLEANING ORGANZAS
BEFORE DRYING OR CLEANING. SHOULD BE DRYED IN WATER
ALL COMPONENTS SEPARATELY FOR 15 MINUTES
DO NOT USE HOT IRON. IN PROTECTION IN PROTECTIVE LAYER OF FABRIC
WASH CLOTHES AND WHITE FABRICS SEPARATELY
NON-COLORED FABRICS SHOULD BE WASHED IN COLD WATER
EXTRA WASHING AND DRYING ARE NOT INCLUDED

NOOR



DS-157 C

**Top- ORGANZA HEAVY EMBROIDERY
WITH KHATLI HAND WORK**

Bottom/Iner- SANTOON

Dupatta- ORGANZA EMBROIDERY

WASHING INSTRUCTIONS
DO NOT USE HOT WATER OR STEAM IRONING OR DRYING AS
BEFORE DYEING OR CLEANING, SHOULD BE SOAKED IN WATER
ALL COMPONENTS SEPARATELY FOR 15 MINUTES
DO NOT USE HOT IRON. IN PROTECTION IN DRYER OR HANG UP
WASH IN COLD AND WASH FABRICS SEPARATELY
NON-COLORED FABRICS SHOULD BE WASHED IN COLD WATER
EXTRA CARE WASHING AND DRYING ARE NOT INCLUDED

