

SAU
SHIVANI

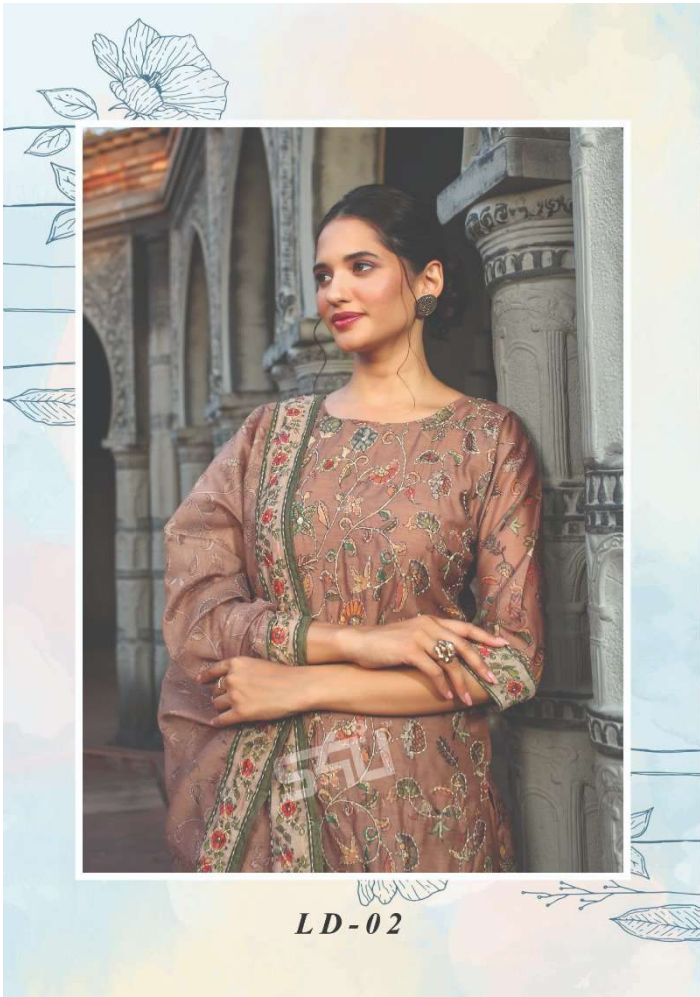
LOVE FOR
Dupatta



LD-01

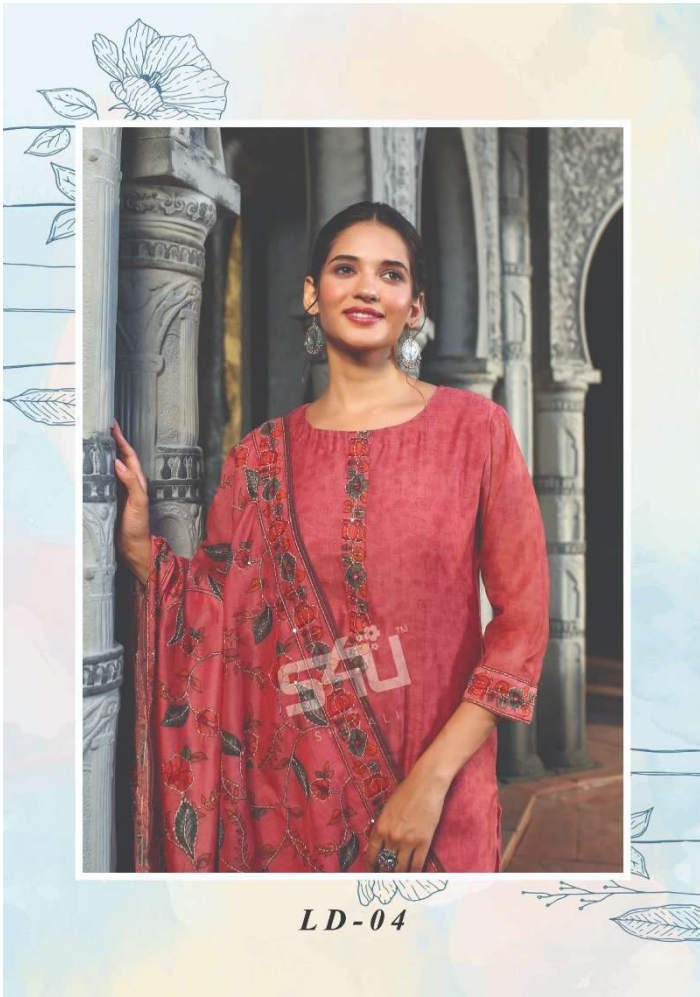


LD-03





LD-06





LD-05

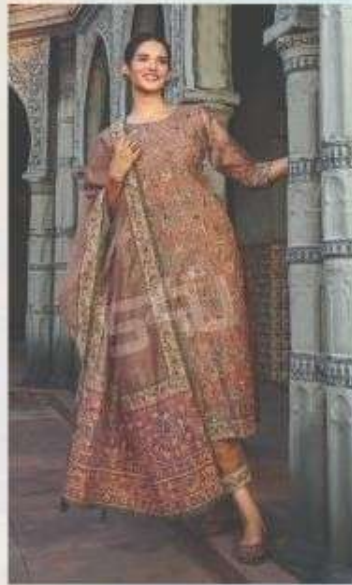
A woman with dark hair tied back is standing in a traditional Indian architectural setting, possibly a courtyard or a temple entrance. She is wearing a long, flowing brown dress with intricate floral and geometric patterns in shades of red, green, and gold. A matching dupatta with a wide, ornate border is draped over her shoulders. She is looking down and to her left with a gentle smile. The background features a series of arches supported by pillars, with detailed carvings and a tiled roof. The lighting is soft, suggesting late afternoon or early morning.

SAU
SHIVANI

LOVE FOR
Dupatta



ID-01



ID-02



ID-03



ID-04



ID-05



ID-06

S4UTM
by
SHIVALI

LOVE FOR
Dupatta