



**READYMAD**  
**#R-1036-E**



**TOP**- ORGENZA WORK WITH EMBROIDERY  
**BOTTOM**- SILK STICHED  
**DUPATTA** - ORGENZA WORK WITH EMBROIDERY

Ⓟ DRY CLEAN ONLY.  
ⓧ DO NOT USE ANY BLEACH OR STAIN REMOVING CHEMICAL.  
Ⓜ IRON THE FABRIC AT MODERATE TEMPERATURE



**READYMAD**  
**#R-1036-E**



**TOP**- ORGENZA WORK WITH EMBROIDERY  
**BOTTOM**- SILK STICHED  
**DUPATTA** - ORGENZA WORK WITH EMBROIDERY

- Ⓟ DRY CLEAN ONLY.
- ⓧ DO NOT USE ANY BLEACH OR STAIN REMOVING CHEMICAL.
- ☎ IRON THE FABRIC AT MODERATE TEMPERATURE.





**READYMAD**  
**#R-1036-D**



**TOP**- ORGENZA WORK WITH EMBROIDERY  
**BOTTOM**- SILK STICHED  
**DUPATTA** - ORGENZA WORK WITH EMBROIDERY



Ⓟ DRY CLEAN ONLY.  
ⓧ DO NOT USE ANY BLEACH OR STAIN REMOVING CHEMICAL.  
Ⓜ IRON THE FABRIC AT MODERATE TEMPERATURE



**READYMAD**  
**#R-1036-F**

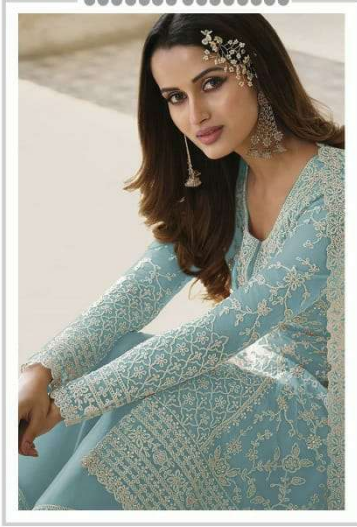


**TOP**- ORGENZA WORK WITH EMBROIDERY  
**BOTTOM**- SILK STICHED  
**DUPATTA** - ORGENZA WORK WITH EMBROIDERY

- Ⓟ DRY CLEAN ONLY.
- ⓧ DO NOT USE ANY BLEACH OR STAIN REMOVING CHEMICAL.
- ☎ IRON THE FABRIC AT MODERATE TEMPERATURE.



**Ramsha**<sup>®</sup>  
1036-NX



**SIZE - XL**

**Ramsha**<sup>®</sup>  
1036-NX





**READYMAD**  
**#R-1036-G**



**TOP**- ORGENZA WORK WITH EMBROIDERY  
**BOTTOM**- SILK STICHED  
**DUPATTA** - ORGENZA WORK WITH EMBROIDERY

- Ⓟ DRY CLEAN ONLY.
- ⓧ DO NOT USE ANY BLEACH OR STAIN REMOVING CHEMICAL.
- ☎ IRON THE FABRIC AT MODERATE TEMPERATURE.

