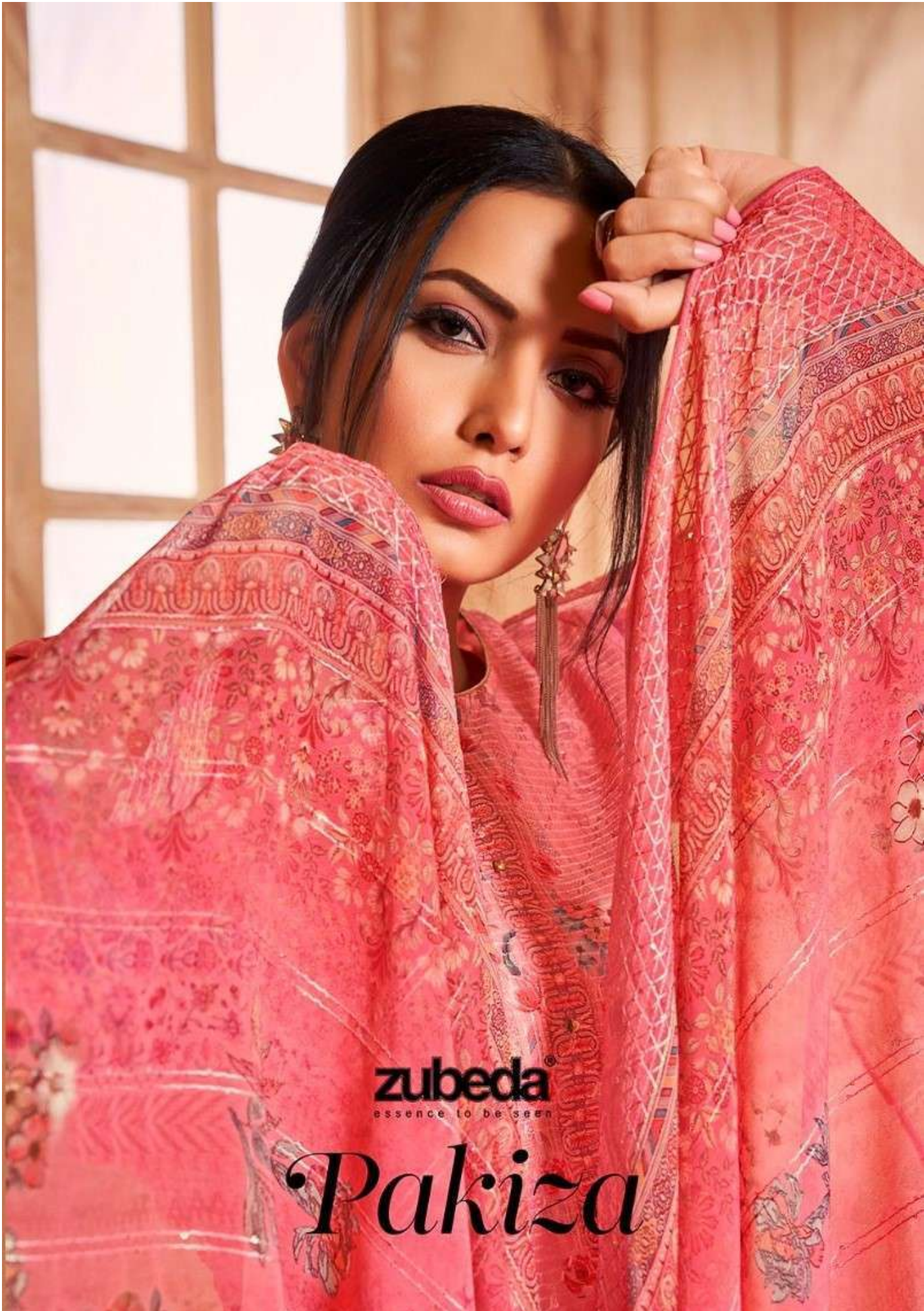


**zubeda**<sup>®</sup>  
essence to be seen

# *Pakiza*



**zubeda**<sup>®</sup>  
essence to be seen

# *Pakiza*



**zubeda**<sup>®</sup>  
essence to be seen

*'Vibrant Salwar with Embellished  
'Details Statement for a Festive and Glamorous  
'Ethnic Ensemble.*





zubeda®  
essence to be seen



*Vibrant Shawar with Embellished Details  
Statement for a Festive and Glamorous Ethnic Ensemble.*



401





*Get ready to revamp your wardrobe with the latest fashion trends for the upcoming season.*



zubeda®  
essence to be seen

"Fashion for Every lady Celebrating  
Diversity in Fashion"





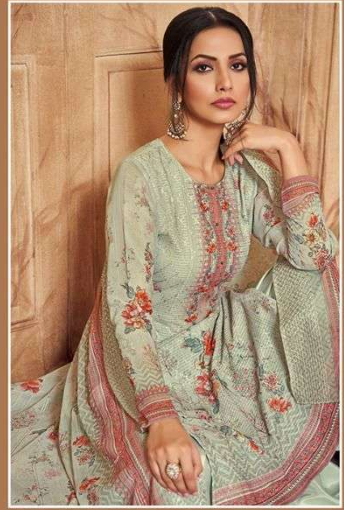
zubeda®  
essence to be seen



*"Elevate your wardrobe with these must  
have pieces that will have you feeling confident and chic."*

~405~





zubeda®  
essence to be seen

*Suits in pastel blues with Embroidered work  
Statement for a Modern and Graceful Indian Aaire.*

402





*"Discover the power of accessorizing  
and how to take your outfit to the next level."*



zubeda®  
essence to be seen



401



402



403



404



405



406

