



शुभकाला®

# SHUBHKALA

VOL. 14



# SHUBHKALA

VOL. 14

| Design NO. (SKU) | Color       | Lehenga – Choli – Dupatta Fabric | Lehenga Work            | Choli Work                            | Dupatta Work   | SIZE (XL-42) SEMI - STITCHED   | SIZE (3XL-48) SEMI - STITCHED  | Dupatta Length (Ready To Wear) | Weight |
|------------------|-------------|----------------------------------|-------------------------|---------------------------------------|--|--|--|--------------------------------|--------|
| 7101             | Navy        | Georgette                        | Fabric Plitting Pattern | Thread with Sequince Embroidered Work | SEQUINCE EMBROIDERED WORK ON NECK (FANCY NECK DUPATTO) | Lehenga Waist: 42 INCH<br>Lehenga Length: 42 INCH<br>Choli Length: 1.20 MTR (Unstitched) | Lehenga Waist: 48 INCH<br>Lehenga Length: 42 INCH<br>Choli Length: 1.40 MTR (Unstitched) | FANCY DUPATTO (2.30 MTR)       | 1.5 KG |
| 7102             | Purple      | Georgette                        | Fabric Plitting Pattern | Thread with Sequince Embroidered Work | SEQUINCE EMBROIDERED WORK ON NECK (FANCY NECK DUPATTO) | Lehenga Waist: 42 INCH<br>Lehenga Length: 42 INCH<br>Choli Length: 1.20 MTR (Unstitched) | Lehenga Waist: 48 INCH<br>Lehenga Length: 42 INCH<br>Choli Length: 1.40 MTR (Unstitched) | FANCY DUPATTO (2.30 MTR)       | 1.5 KG |
| 7103             | Red         | Georgette                        | Fabric Plitting Pattern | Thread with Sequince Embroidered Work | SEQUINCE EMBROIDERED WORK ON NECK (FANCY NECK DUPATTO) | Lehenga Waist: 42 INCH<br>Lehenga Length: 42 INCH<br>Choli Length: 1.20 MTR (Unstitched) | Lehenga Waist: 48 INCH<br>Lehenga Length: 42 INCH<br>Choli Length: 1.40 MTR (Unstitched) | FANCY DUPATTO (2.30 MTR)       | 1.5 KG |
| 7104             | Pearl White | Georgette                        | Fabric Plitting Pattern | Thread with Sequince Embroidered Work | SEQUINCE EMBROIDERED WORK ON NECK (FANCY NECK DUPATTO) | Lehenga Waist: 42 INCH<br>Lehenga Length: 42 INCH<br>Choli Length: 1.20 MTR (Unstitched) | Lehenga Waist: 48 INCH<br>Lehenga Length: 42 INCH<br>Choli Length: 1.40 MTR (Unstitched) | FANCY DUPATTO (2.30 MTR)       | 1.5 KG |
| 7105             | Pista Green | Georgette                        | Fabric Plitting Pattern | Thread with Sequince Embroidered Work | SEQUINCE EMBROIDERED WORK ON NECK (FANCY NECK DUPATTO) | Lehenga Waist: 42 INCH<br>Lehenga Length: 42 INCH<br>Choli Length: 1.20 MTR (Unstitched) | Lehenga Waist: 48 INCH<br>Lehenga Length: 42 INCH<br>Choli Length: 1.40 MTR (Unstitched) | FANCY DUPATTO (2.30 MTR)       | 1.5 KG |
| 7106             | Black       | Georgette                        | Fabric Plitting Pattern | Thread with Sequince Embroidered Work | SEQUINCE EMBROIDERED WORK ON NECK (FANCY NECK DUPATTO) | Lehenga Waist: 42 INCH<br>Lehenga Length: 42 INCH<br>Choli Length: 1.20 MTR (Unstitched) | Lehenga Waist: 48 INCH<br>Lehenga Length: 42 INCH<br>Choli Length: 1.40 MTR (Unstitched) | FANCY DUPATTO (2.30 MTR)       | 1.5 KG |
| 7107             | Lavender    | Georgette                        | Fabric Plitting Pattern | Thread with Sequince Embroidered Work | SEQUINCE EMBROIDERED WORK ON NECK (FANCY NECK DUPATTO) | Lehenga Waist: 42 INCH<br>Lehenga Length: 42 INCH<br>Choli Length: 1.20 MTR (Unstitched) | Lehenga Waist: 48 INCH<br>Lehenga Length: 42 INCH<br>Choli Length: 1.40 MTR (Unstitched) | FANCY DUPATTO (2.30 MTR)       | 1.5 KG |
| 7108             | Dusty Sky   | Georgette                        | Fabric Plitting Pattern | Thread with Sequince Embroidered Work | SEQUINCE EMBROIDERED WORK ON NECK (FANCY NECK DUPATTO) | Lehenga Waist: 42 INCH<br>Lehenga Length: 42 INCH<br>Choli Length: 1.20 MTR (Unstitched) | Lehenga Waist: 48 INCH<br>Lehenga Length: 42 INCH<br>Choli Length: 1.40 MTR (Unstitched) | FANCY DUPATTO (2.30 MTR)       | 1.5 KG |
| 7109             | Dusty Pink  | Georgette                        | Fabric Plitting Pattern | Thread with Sequince Embroidered Work | SEQUINCE EMBROIDERED WORK ON NECK (FANCY NECK DUPATTO) | Lehenga Waist: 42 INCH<br>Lehenga Length: 42 INCH<br>Choli Length: 1.20 MTR (Unstitched) | Lehenga Waist: 48 INCH<br>Lehenga Length: 42 INCH<br>Choli Length: 1.40 MTR (Unstitched) | 2.30 MTR                       | 1.5 KG |
| 7110             | Green       | Georgette                        | Fabric Plitting Pattern | Thread with Sequince Embroidered Work | SEQUINCE EMBROIDERED WORK ON NECK (FANCY NECK DUPATTO) | Lehenga Waist: 42 INCH<br>Lehenga Length: 42 INCH<br>Choli Length: 1.20 MTR (Unstitched) | Lehenga Waist: 48 INCH<br>Lehenga Length: 42 INCH<br>Choli Length: 1.40 MTR (Unstitched) | 2.30 MTR                       | 1.5 KG |

THIS BOOK / CATALOGUE / LOGO / ARE PROTECTED UNDER COPYRIGHT ACT.  
AN INLEGAL/UNAUTHORIZED REPRINT, PUBLISHING, REPRODUCTION, DISTRIBUTION AND MODIFICATION OF ANY IMAGES, PHOTOGRAPHS AND PRODUTCS, TOTALLY OR IN PART, FOR ANY PURPOSE, REASON OR CAUSE IS STRICTLY PROHIBITED AND PUNISHABLE UNDER LAW.



































शुभकाला®

SHUBHKALA

VOL. 14



bhkala



7101

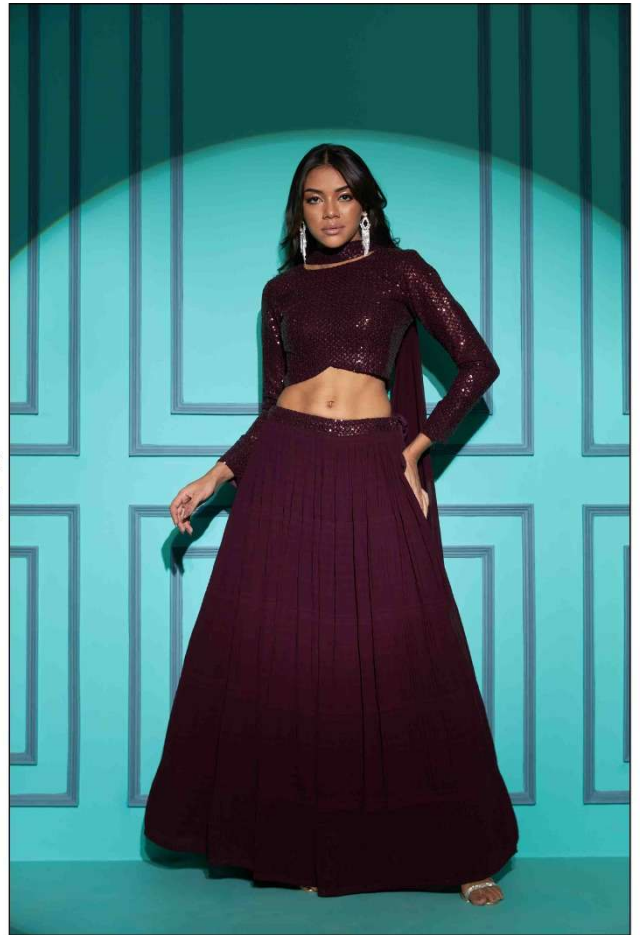






Subhkalā

7102









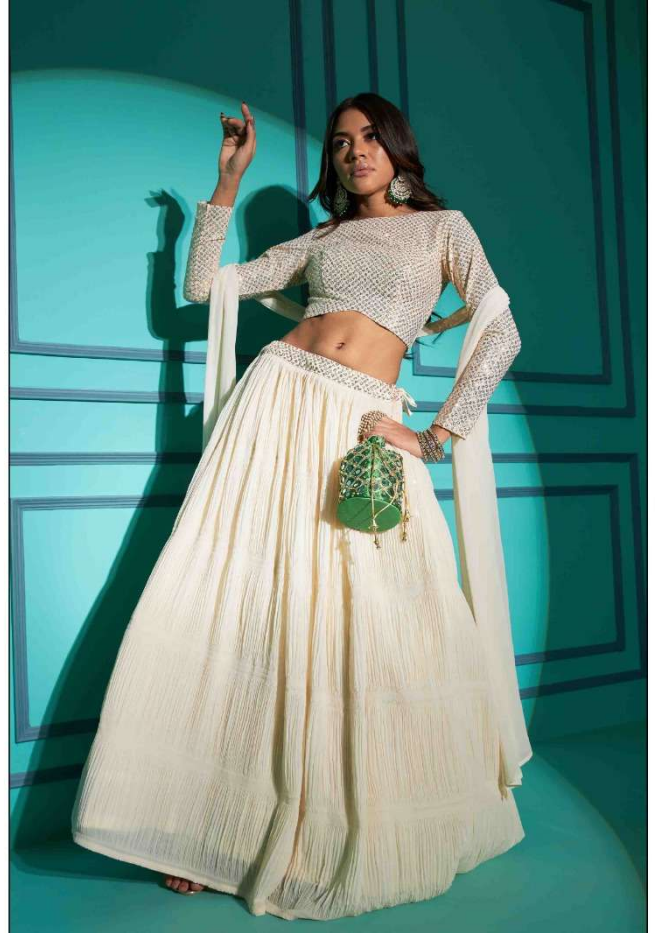
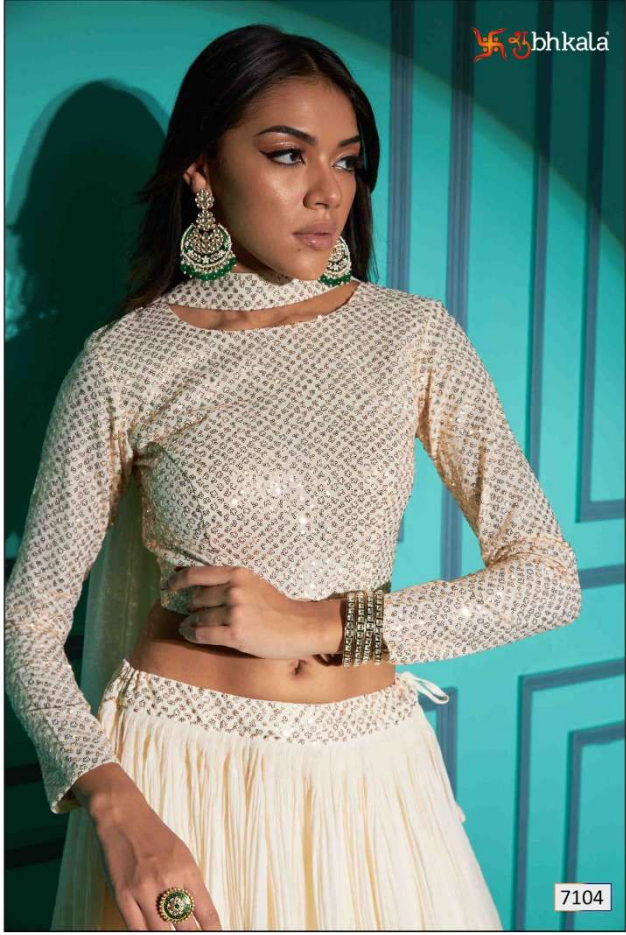
शुभकला bhkala



7103



7103







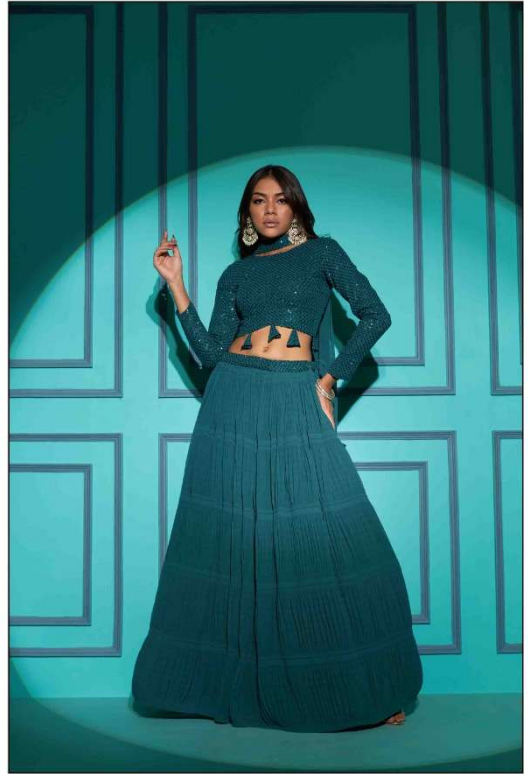
शुभकला bhkala



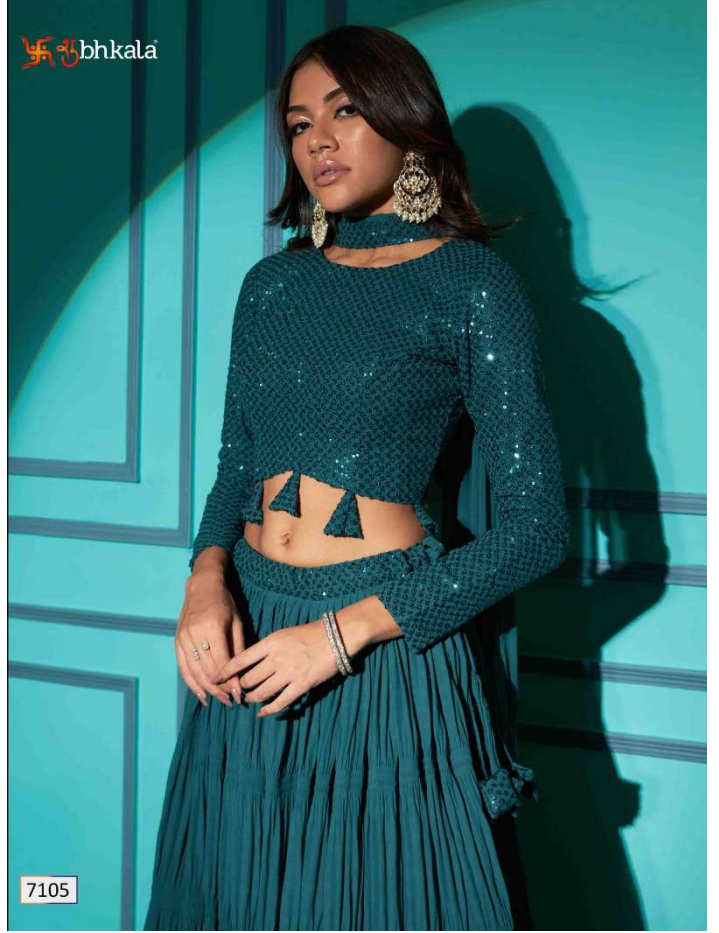
7104



शुभकला bhkala



7105







शुभकला

7106



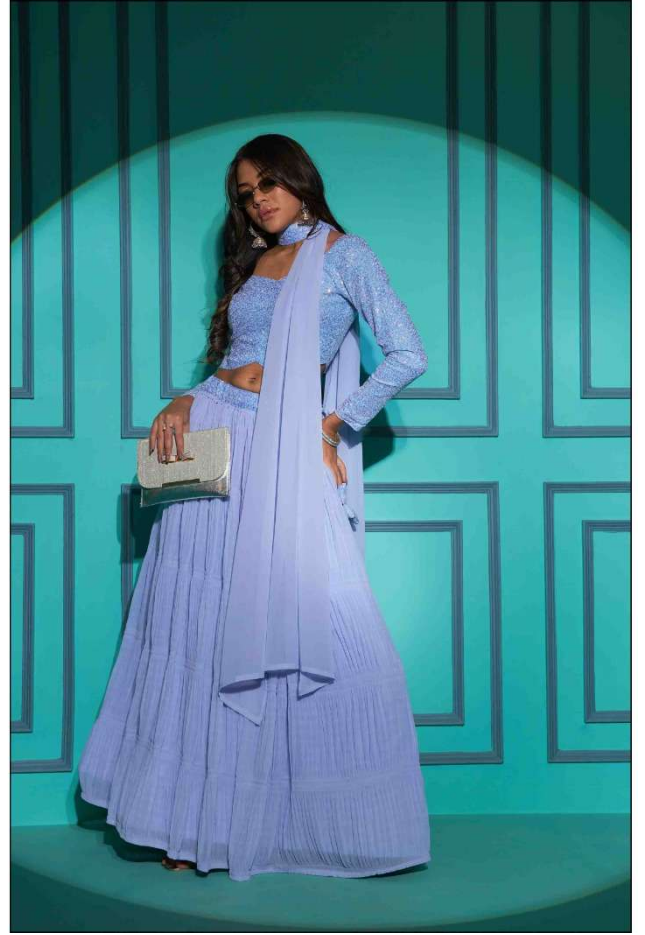








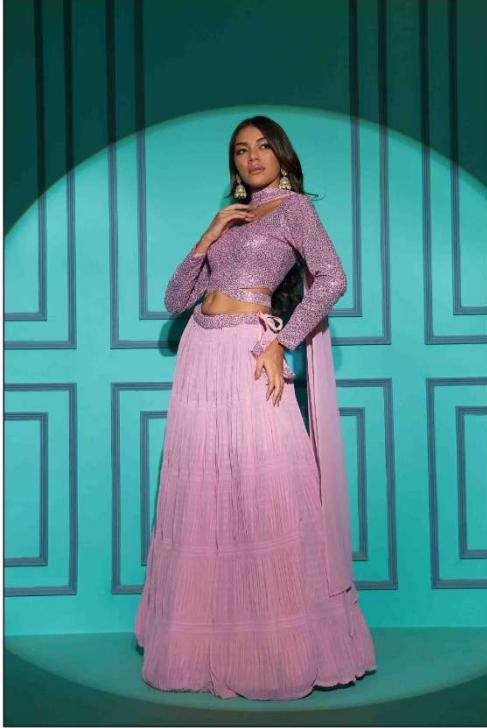
7108





7108





7109





शुभकला

7109





భక్తా

7110







7110



7101



7102



7103



7104



7105

शुभकाला  
SHUBHKALA  
VOL. 14



7106



7107



7108



7109



7110