

A woman is the central figure, wearing a peach and gold saree with a pink border. She is adorned with traditional Indian jewelry, including a large gold necklace, matching earrings, a forehead ornament (maang tikka), and bangles. Her hair is pulled back, and she has a serene expression. The background is a warm, golden-brown color with a subtle pattern. The overall aesthetic is elegant and traditional.

*Pankh*TM
• Beauty of Weaves •

ANUSHKA
VOL-2

A woman is the central figure, wearing a peach and gold saree with a pink border. She is adorned with traditional Indian jewelry, including a large gold necklace, earrings, a maang tikka, and bangles. The background is a warm, golden-brown color with a subtle pattern. The overall aesthetic is elegant and traditional.

*Pankh*TM
• Beauty of Weaves •

ANUSHKA
VOL-2



6101



6102



6103



6107



6108



6109



6104



6105



6106



6110



6111

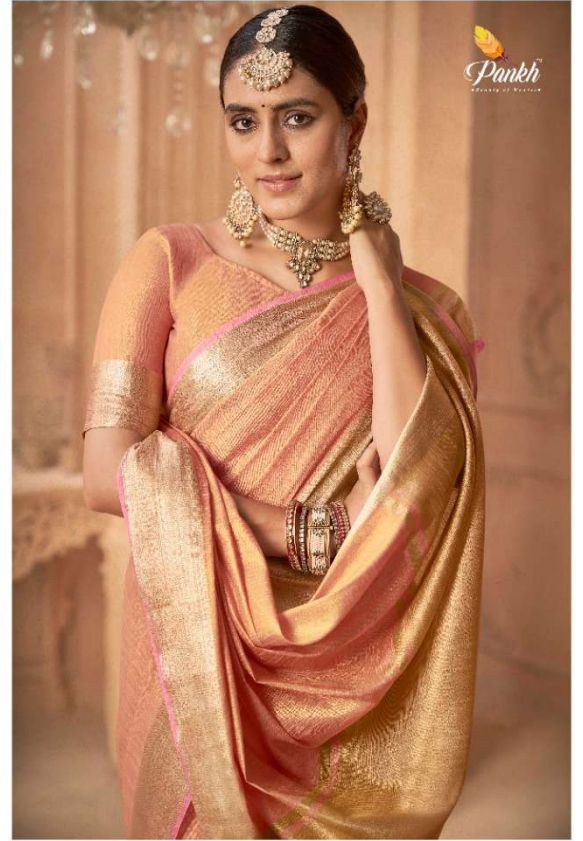




0109



611





6110



Pankh
Group of Weavers

6107



Pankh
Sarees of the era

0108



6106



6106

Pankh
BY ANITA DOLY



6101





Pankh

6103



6102

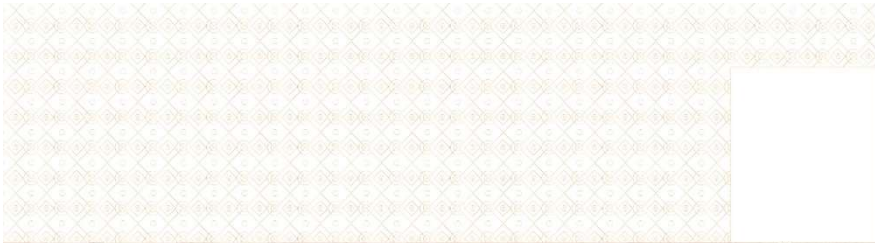


Pankh
UNIVERSITY OF BEAUTY



6103







6101