



**TOP- CAMBRIC COTTON BORING WORK WITH HEAVY EMBROIDERY**

**M-220 B**

**BOTTOM/INNER- SEMI COTTON**

**DUPATTA/NET- TABBY SILK DIGITAL PRINTED/ MAL MAL DIGITAL PRINTED DUPTA**

- ☉ DRY CLEAN ONLY.
- ✘ DO NOT USE ANY BLEACH OR STAIN REMOVING CHEMICAL.
- ☎ IRON THE FABRIC AT MODERATE TEMPERATURE.



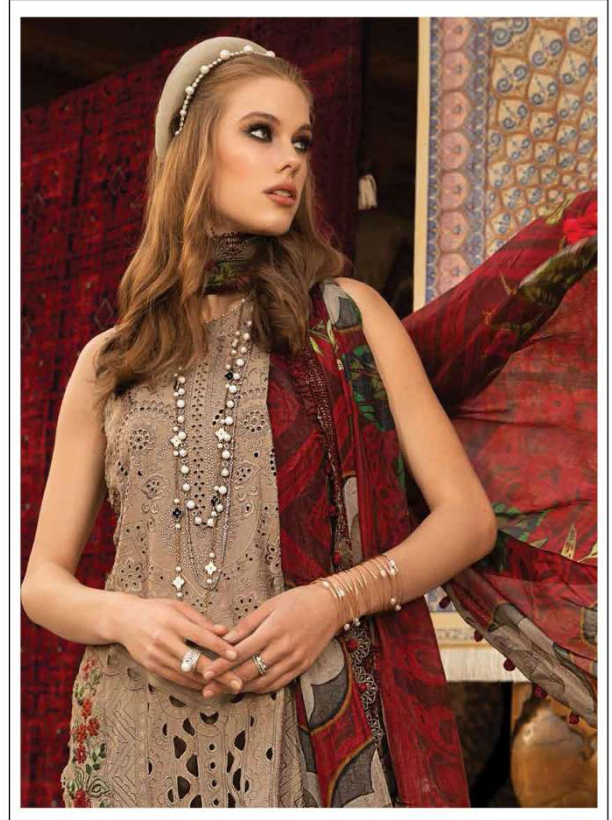
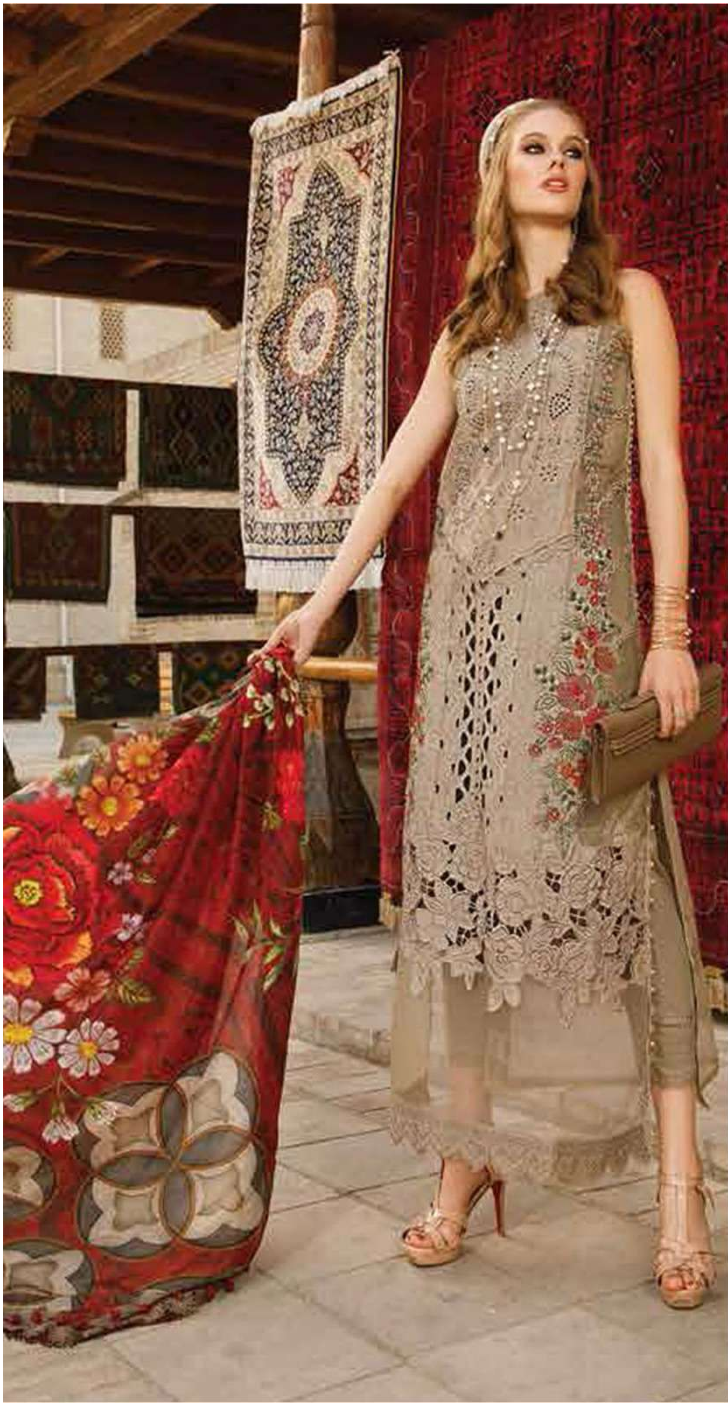
**TOP- CAMBRIC COTTON BORING WORK  
WITH HEAVY EMBROIDERY**

**M-220 B**

**BOTTOM/INNER- SEMI COTTON**

**DUPATTA/NET- TABBY SILK DIGITAL  
PRINTED/ MAL MAL DIGITAL PRINTED DUPTA**

- ☉ DRY CLEAN ONLY.
- ✘ DO NOT USE ANY BLEACH OR STAIN REMOVING CHEMICAL.
- ☎ IRON THE FABRIC AT MODERATE TEMPERATURE.



**TOP- CAMBRIC COTTON BORING WORK  
WITH HEAVY EMBROIDERY**

M-222

**BOTTOM/INNER- SEMI COTTON**

**DUPATTA/NET- TABBY SILK DIGITAL  
PRINTED/ MAL MAL DIGITAL PRINTED DUPTA**

- ☉ DRY CLEAN ONLY.
- ✗ DO NOT USE ANY BLEACH OR STAIN REMOVING CHEMICAL.
- ☼ IRON THE FABRIC AT MODERATE TEMPERATURE.



**TOP- CAMBRIC COTTON BORING WORK  
WITH HEAVY EMBROIDERY**

M-220 A

**BOTTOM/INNER- SEMI COTTON**

**DUPATTA/NET- TABBY SILK DIGITAL  
PRINTED/ MAL MAL DIGITAL PRINTED DUPTA**

- ☉ DRY CLEAN ONLY.
- ✗ DO NOT USE ANY BLEACH OR STAIN REMOVING CHEMICAL.
- ☎ IRON THE FABRIC AT MODERATE TEMPERATURE.



**TOP- CAMBRIC COTTON BORING WORK WITH HEAVY EMBROIDERY**

M-220

**BOTTOM/INNER- SEMI COTTON**

**DUPATTA/NET- TABBY SILK DIGITAL PRINTED/ MAL MAL DIGITAL PRINTED DUPTA**

- ☉ DRY CLEAN ONLY.
- ✘ DO NOT USE ANY BLEACH OR STAIN REMOVING CHEMICAL.
- ☎ IRON THE FABRIC AT MODERATE TEMPERATURE.



TOP CAMBIA TUTTA BORG  
MATERIALE IN COTONE  
BOUTIQUE & SARTORI  
SILVANO TARI SPA  
M. 212







