

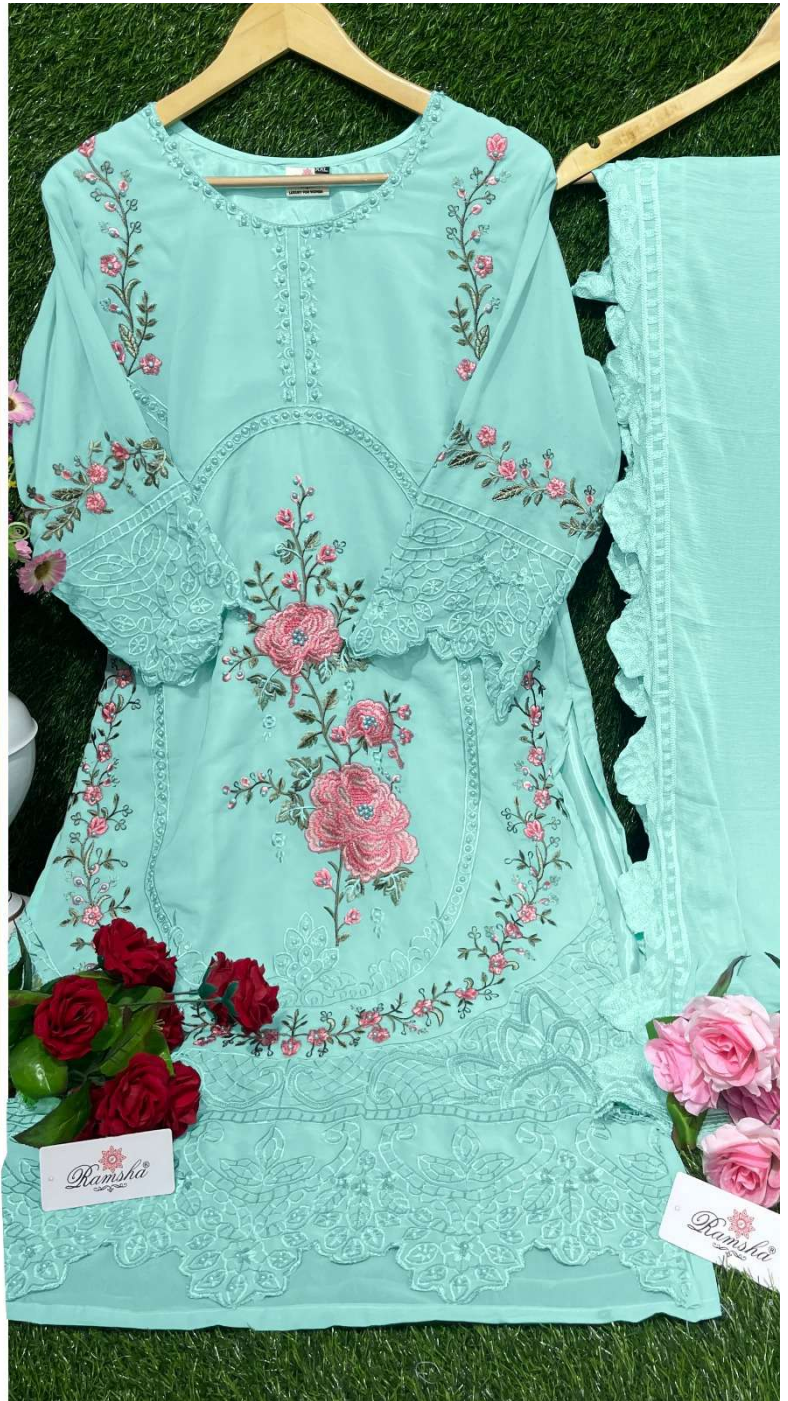


READYMAD
#R-1060-C



TOP- GEORGET WITH EMBROIDERY
BOTTOM- SILK STICH
DUPATTA - NAJMEEN EMBROIDERY

- Ⓟ DRY CLEAN ONLY.
- ⓧ DO NOT USE ANY BLEACH OR STAIN REMOVING CHEMICAL.
- ☎ IRON THE FABRIC AT MODERATE TEMPERATURE.





**READYMAD
COLLECTION**



#R-1060-A



#R-1060-B

1400

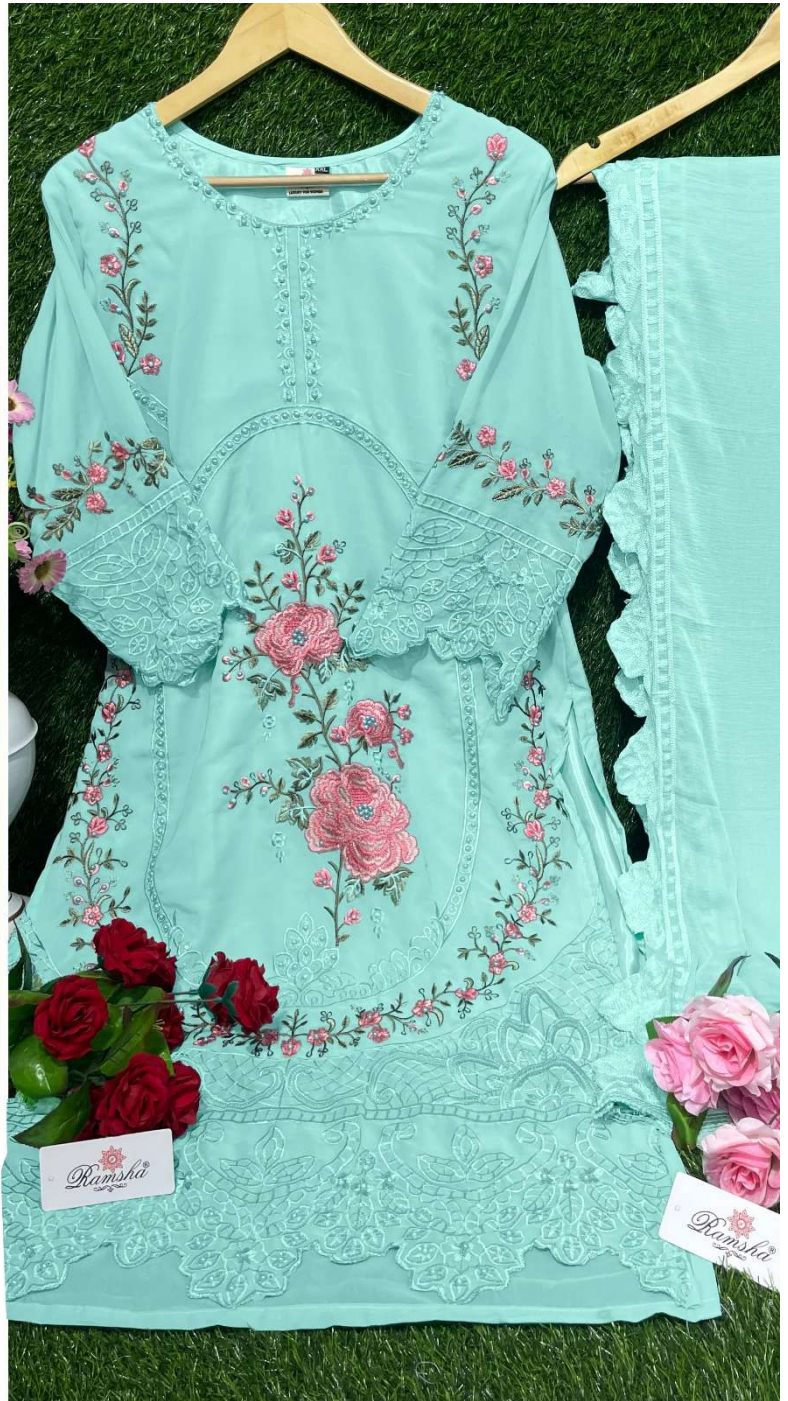


READYMAD
#R-1060-C



TOP- GEORGET WITH EMBROIDERY
BOTTOM- SILK STICH
DUPATTA - NAJMEEN EMBROIDERY

- Ⓟ DRY CLEAN ONLY.
- ⓧ DO NOT USE ANY BLEACH OR STAIN REMOVING CHEMICAL.
- ☎ IRON THE FABRIC AT MODERATE TEMPERATURE.



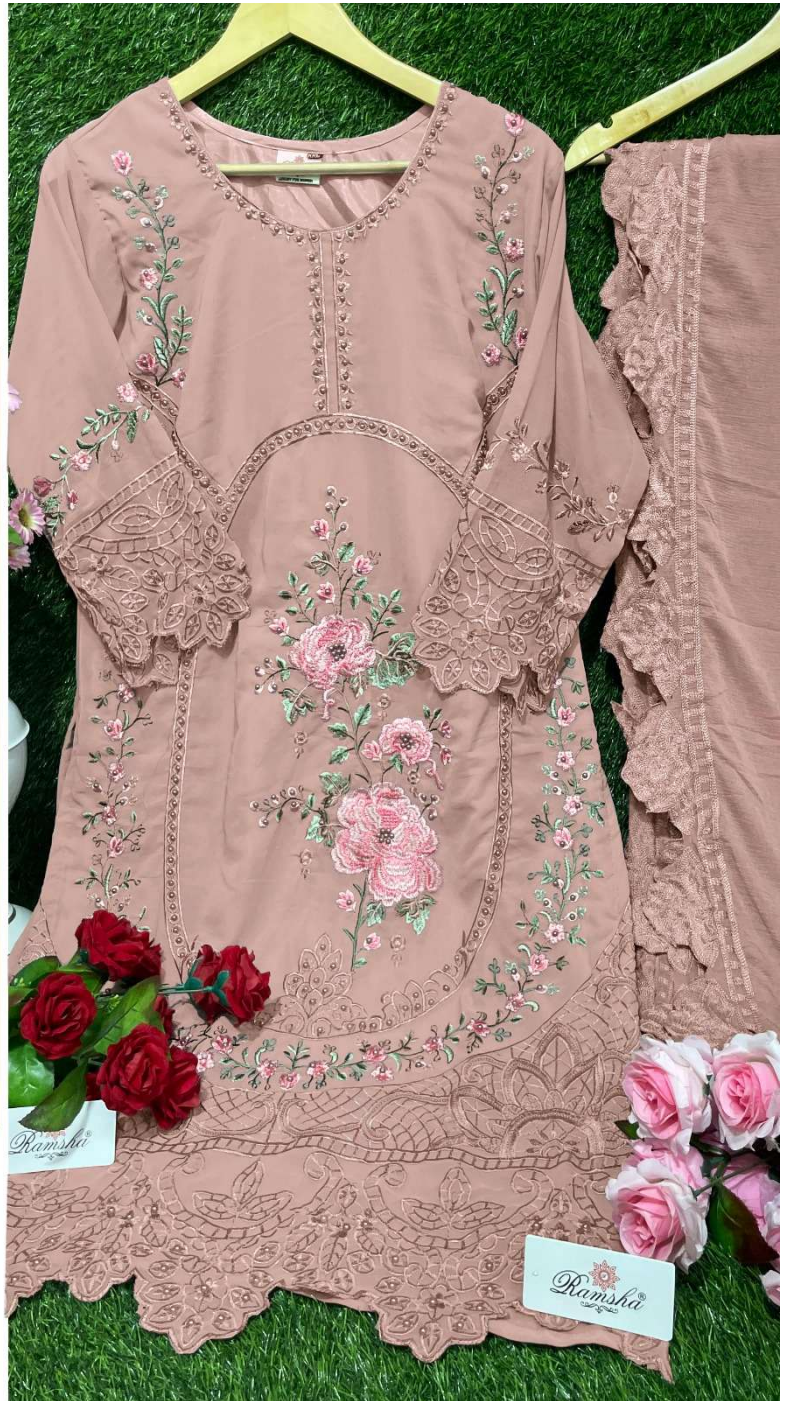


READYMAD
#R-1060-D



TOP- GEORGET WITH EMBROIDERY
BOTTOM- SILK STICH
DUPATTA - NAJMEEN EMBROIDERY

- Ⓟ DRY CLEAN ONLY.
- ⊗ DO NOT USE ANY BLEACH OR STAIN REMOVING CHEMICAL.
- ☎ IRON THE FABRIC AT MODERATE TEMPERATURE.



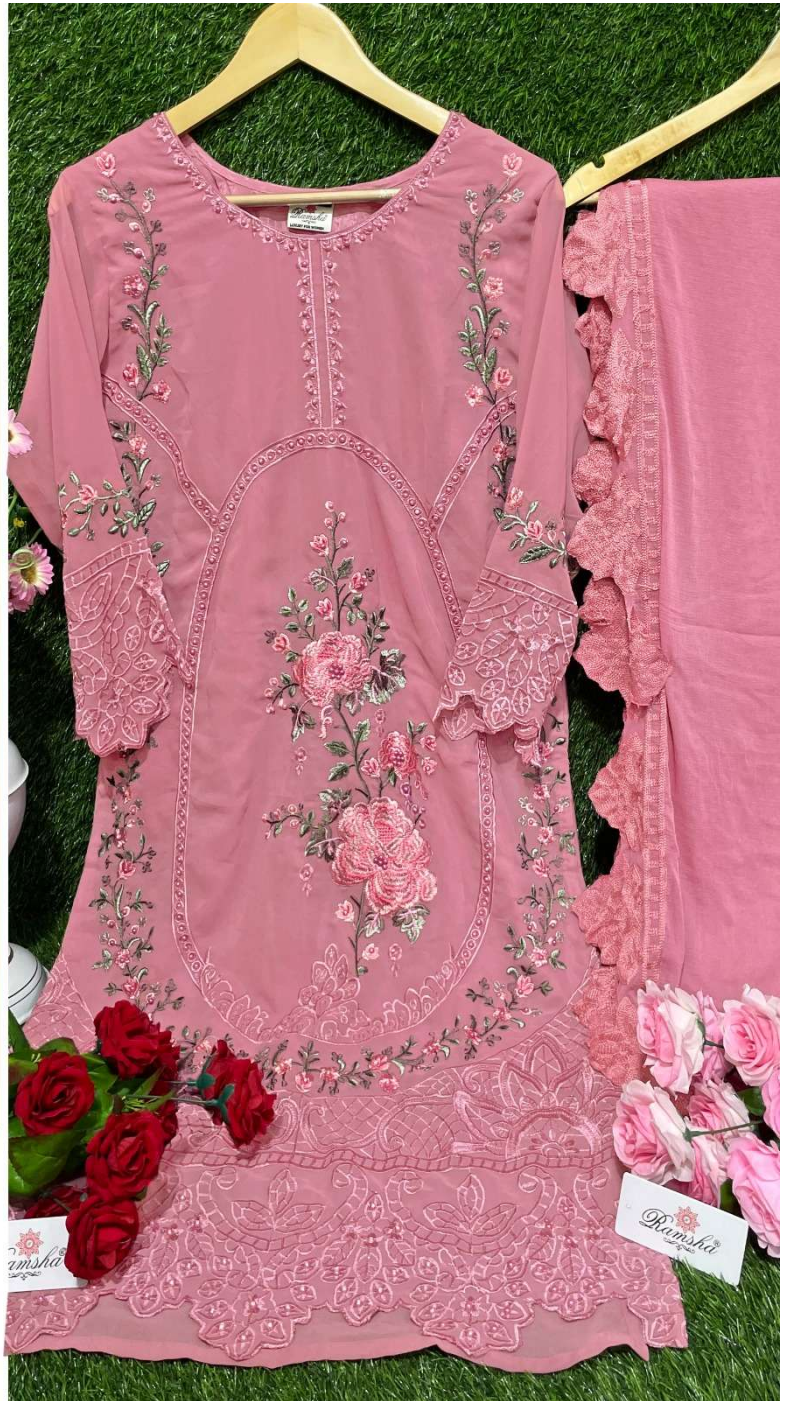


READYMAD
#R-1060-F



TOP- GEORGET WITH EMBROIDERY
BOTTOM- SILK STICH
DUPATTA - NAJMEEN EMBROIDERY

- Ⓟ DRY CLEAN ONLY.
- ⊗ DO NOT USE ANY BLEACH OR STAIN REMOVING CHEMICAL.
- ☎ IRON THE FABRIC AT MODERATE TEMPERATURE.





READYMAD
#R-1060-E



TOP- GEORGET WITH EMBROIDERY
BOTTOM- SILK STICH
DUPATTA - NAJMEEN EMBROIDERY

- Ⓟ DRY CLEAN ONLY.
- ⓧ DO NOT USE ANY BLEACH OR STAIN REMOVING CHEMICAL.
- ☎ IRON THE FABRIC AT MODERATE TEMPERATURE.





#R-1060-C



#R-1060-D



#R-1060-E



#R-1060-F

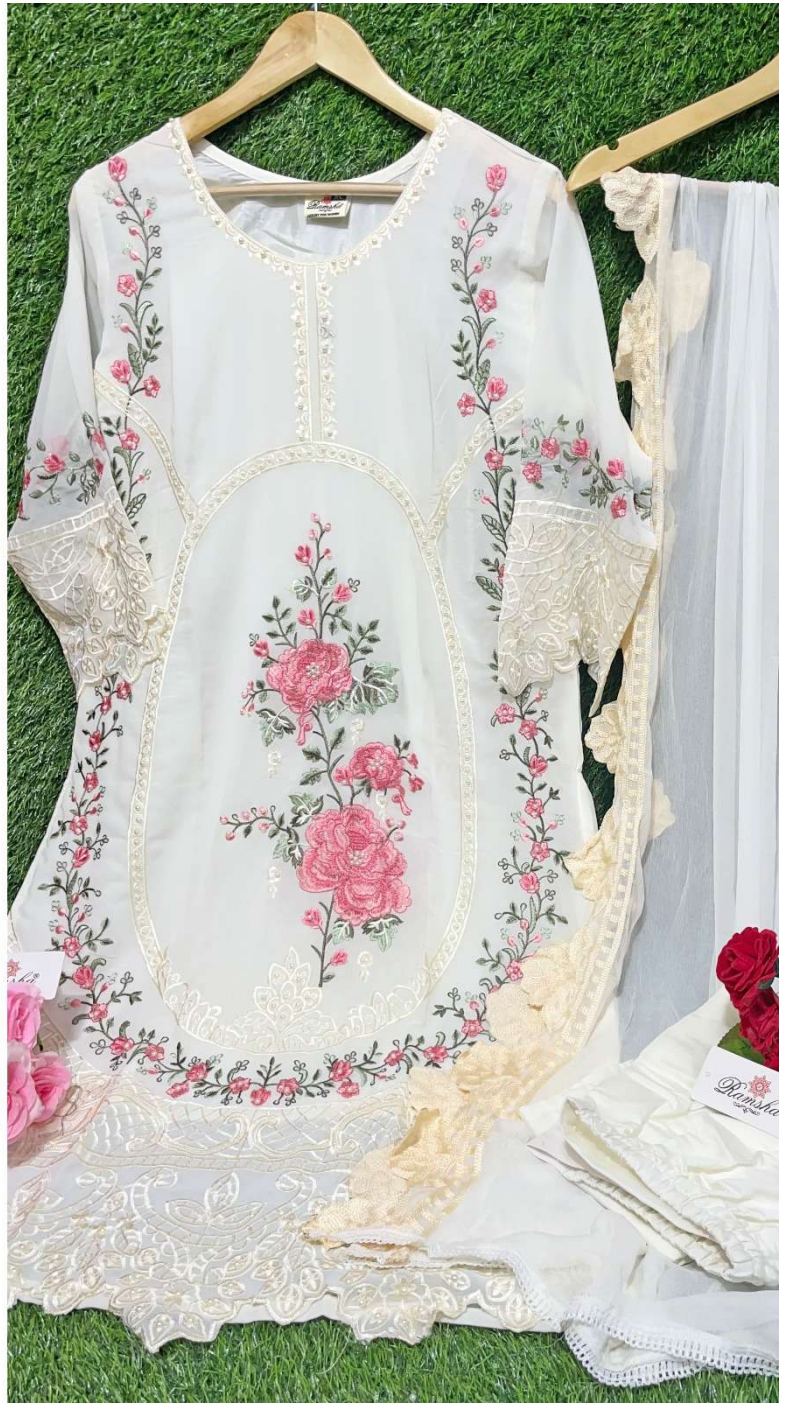


READYMAD
#R-1060-A



TOP- GEORGET WITH EMBROIDERY
BOTTOM- SILK STICH
DUPATTA - NAJMEEN EMBROIDERY

- Ⓟ DRY CLEAN ONLY.
- ⓧ DO NOT USE ANY BLEACH OR STAIN REMOVING CHEMICAL.
- ☎ IRON THE FABRIC AT MODERATE TEMPERATURE.





READYMAD
#R-1060-B



TOP- GEORGET WITH EMBROIDERY
BOTTOM- SILK STICH
DUPATTA - NAJMEEN EMBROIDERY

- Ⓟ DRY CLEAN ONLY.
- ⓧ DO NOT USE ANY BLEACH OR STAIN REMOVING CHEMICAL.
- ☎ IRON THE FABRIC AT MODERATE TEMPERATURE.

