



VARSHA  
LIBAS E-LAJAWAB



A woman with dark hair is standing in the center of a large, ornate Gothic archway. She is wearing a vibrant green sari with intricate gold and floral patterns. The archway is made of dark wood with complex tracery. The background wall is made of light-colored stone tiles. The floor is also made of light-colored tiles.

VARSHA  
LIBAS E-LA JAWAB



*Nothing more lends you a soulful traditional and royal look than*

LB-03

*a golden woven jacquard dress, embrace a majestic style!*







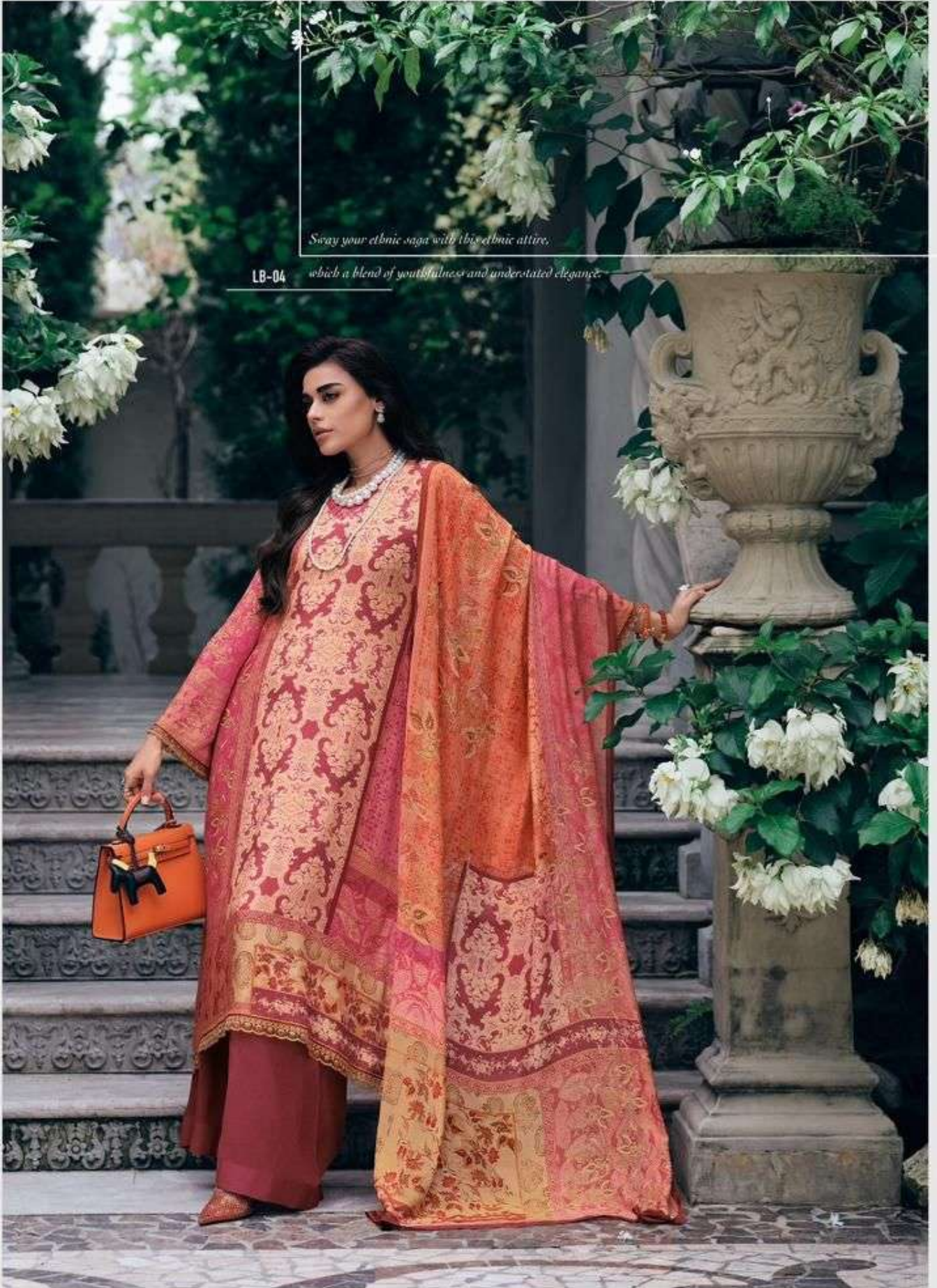
*Give more power to your ethnic fashion  
series with this gold woven imperial blue dress!*

LB-05

*Sway your ethnic saga with this ethnic attire,*

LB-04

*which a blend of youthfulness and understated elegance.*















LB-01



LB-02



LB-05



LB-06



LB-03



LB-04



VARSHA  
LIBAS'E-LA JAWAB





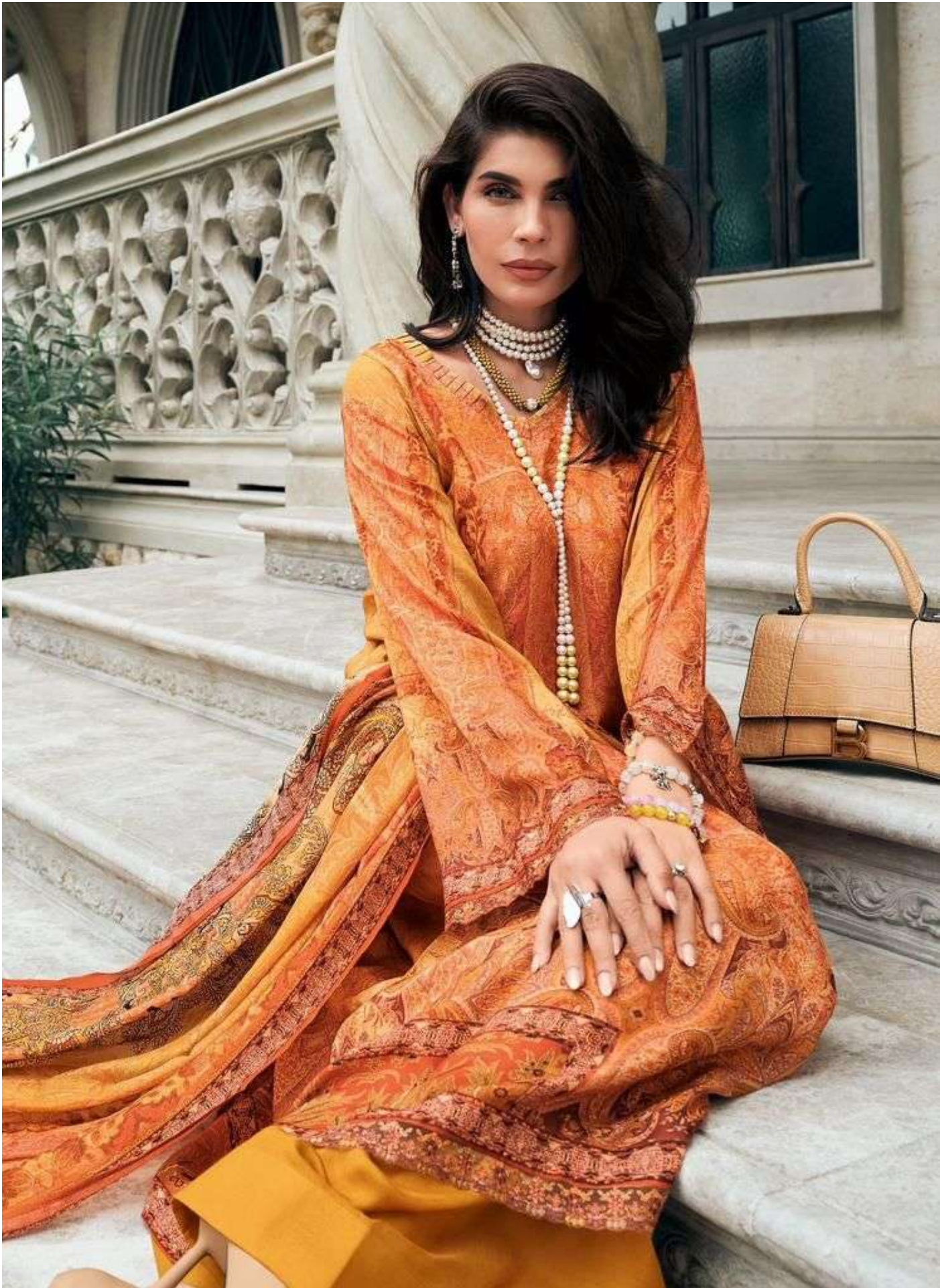
A regal medley of lush fabrics and fine embroidery

LR-06

The classic, elegant, and sophisticated









DESIGN	PRICE	DESCRIPTION
LB-01	2080/-	TOP
LB-02	2080/-	MUSLIN SILK DIGITALLY PRINTED WITH LACES
LB-03	2080/-	-
LB-04	2080/-	BOTTOM
LB-05	2080/-	MATT STAIN SOLID
LB-06	2080/-	DUPATTA
		FINEST MUSLIN DIGITALLY PRINTED

**TOTAL AMOUNT :12,480/-+GST**

**TOTAL PIECES : 6**



The blend of thoughtful detailing and deep hues have a wonderful clothing treat this season.

LB-01





*The ethnic yet contemporary fashion always enriches your hopes and dreams for a perfect dress!*

LB-02

