

A close-up portrait of a woman with dark hair, wearing a green and gold saree. She is adorned with traditional Indian jewelry, including large gold earrings, multiple rings, and bangles. Her hands are positioned near her face, and she has white henna designs on her fingers and palm. The background is a solid blue color.

RAJPATH™
"The Secret of Style"

AARYA SILK

A close-up portrait of a woman with dark hair, wearing a green and gold saree. She is adorned with traditional Indian jewelry, including large gold earrings, a bindi on her forehead, and multiple rings and bangles on her hands. Her hands are positioned near her face, and she has white henna designs on her fingers and palm. The background is a solid blue color.

RAJPATH™
"The Secret of Style"

AARYA SILK





131002



RAJATHTM
"The Secret of Style"



RAJPATH™
"The Secret of Style"





RAJPATHTM
"The Secret of Style"



131004



131002

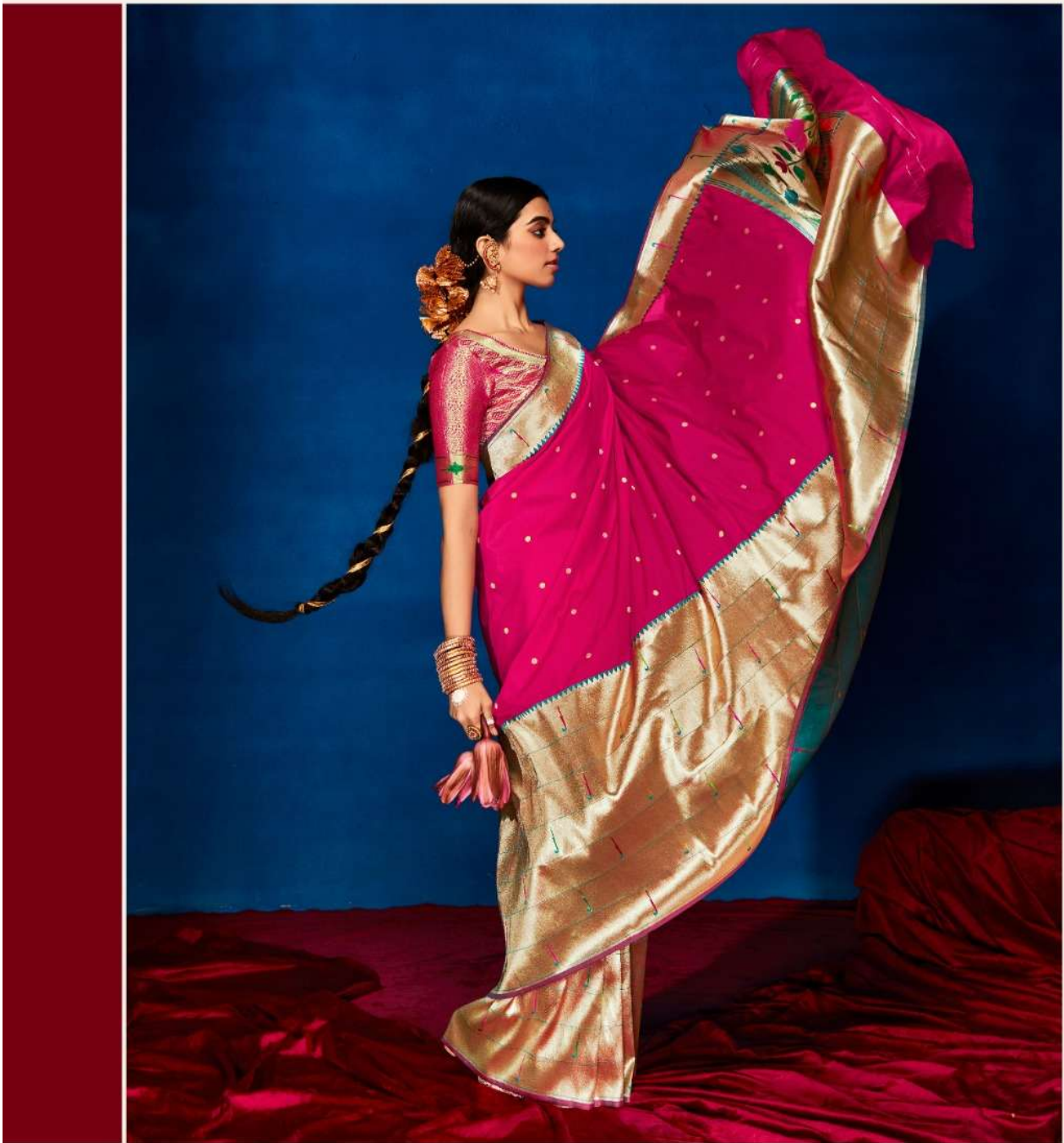
RAJATHTM
"The Secret of Style"



131003







The logo for Rajpath features a stylized crown or floral motif above the word "RAJPATH" in a bold, serif font. Below the brand name, the tagline "The Secret of Style" is written in a smaller, elegant script. A small trademark symbol (TM) is positioned to the right of the brand name.

131005







RAJPATH™
"The Secret of Style"

131006



131007

RAJPATH™
"The Secret of Style"





131001



131002



131003



131005



131006



131007



131008





131004



131008

RAJPATHTM
"The Secret of Style"

Aarya Silk



RAJPATH™
"The Secret of Style"



RAJPATHTM
"The Secret of Style"



131001

RAJPATH™
"The Secret of Style"

AARYA SILK



RAJPATH™
"The Secret of Style"

Aarya Silk

