



#R-548-C



TOP- ORGENZA WORK WITH EMBROIDERY
BOTTOM-DULL SANTOON
DUPATTA - ORGENZA WORK WITH EMBROIDERY

- Ⓟ DRY CLEAN ONLY.
- ⓧ DO NOT USE ANY BLEACH OR STAIN REMOVING CHEMICAL.
- ☎ IRON THE FABRIC AT MODERATE TEMPERATURE.





#R-548-C



TOP- ORGENZA WORK WITH EMBROIDERY
BOTTOM-DULL SANTOON
DUPATTA - ORGENZA WORK WITH EMBROIDERY

- Ⓟ DRY CLEAN ONLY.
- ⓧ DO NOT USE ANY BLEACH OR STAIN REMOVING CHEMICAL.
- ☎ IRON THE FABRIC AT MODERATE TEMPERATURE.





#R-548-B



TOP- ORGENZA WORK WITH EMBROIDERY
BOTTOM-DULL SANTOON
DUPATTA - ORGENZA WORK WITH EMBROIDERY

Ⓟ DRY CLEAN ONLY.
ⓧ DO NOT USE ANY BLEACH OR STAIN REMOVING CHEMICAL.
☎ IRON THE FABRIC AT MODERATE TEMPERATURE.



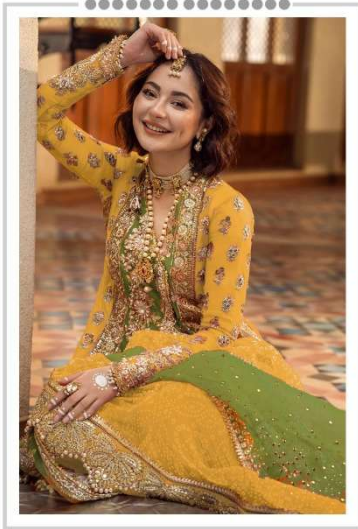
#R-548-A



TOP- ORGENZA WORK WITH EMBROIDERY
BOTTOM-DULL SANTOON
DUPATTA - ORGENZA WORK WITH EMBROIDERY

- Ⓟ DRY CLEAN ONLY.
- ⓧ DO NOT USE ANY BLEACH OR STAIN REMOVING CHEMICAL.
- ☎ IRON THE FABRIC AT MODERATE TEMPERATURE.

Ramsha®
548-NX



Ramsha®
548-NX



#R-548-A



#R-548-B



#R-548-C



#R-548-D



#R-548-D



TOP- ORGENZA WORK WITH EMBROIDERY
BOTTOM-DULL SANTOON
DUPATTA - ORGENZA WORK WITH EMBROIDERY

Ⓟ DRY CLEAN ONLY.
ⓧ DO NOT USE ANY BLEACH OR STAIN REMOVING CHEMICAL.
☎ IRON THE FABRIC AT MODERATE TEMPERATURE.



Ranasha
#R-548-B

TOP - ORGANZA WORK WITH EMBROIDERY
BOTTOM - FUSION SANSLOOM
DUPATTA - ORGANZA WORK WITH EMBROIDERY

WASH IN COLD WATER
DO NOT USE HOT BLEACH OR STAIN REMOVING CHEMICAL.
IRON THE FABRIC AT MEDIUM TEMPERATURE.



Kansha
#R-548-C

TOP- ORGANDA WORK WITH EMBROIDERY
BOTTOM- SUEDE SATOON
DUPATTA - ORGANDA WORK WITH EMBROIDERY

SIZE- 32 TO 40
WE CAN MAKE AS STAIN RESISTANT FABRIC
WE CAN MAKE AS STAIN RESISTANT FABRIC



Kamsha
#R-548

TOP- ORGENZA WORK WITH EMBROIDERY
BOTTOM-NEEL SANTOOL
DUPATTA- ORGENZA WORK WITH EMBROIDERY

BYE CLAN ONLY
DO NOT USE ANY BLEACH OR STAIN REMOVAL CHEMICAL
ON THE FABRIC AT HOME OR IN THE WASHING MACHINE



Ramsha
#R-548-D

TOP - GORGONA WORK WITH EMBROIDERY
BOTTOM SUELL SANTIUM
DUPATTA - GORGONA WORK WITH EMBROIDERY

DO NOT BLEACH
DO NOT USE DRY BLEACH OR STAIN REMOVAL CHEMICAL
WASH IN PINK AT MEDIUM TEMPERATURE