

A woman with long, dark, wavy hair is wearing a light pink, long-sleeved, floor-length dress with intricate white embroidery. The dress features a V-neckline, a high collar, and a gathered waist. The embroidery includes geometric patterns on the bodice and floral motifs on the skirt. She is also wearing large, ornate silver earrings and a matching necklace. The background is a plain, light-colored wall.

VAMIK
THE FASHION STUDIO

AADHIRA
VOL-05
LIGHT COLOR



VAMIKA
THE FASHION STUDIO



❖ 1107-M ❖



❖ 1107-N ❖





VAMIKA
THE FASHION STUDIO



❖ 1107-O ❖



❖ 1107-L ❖





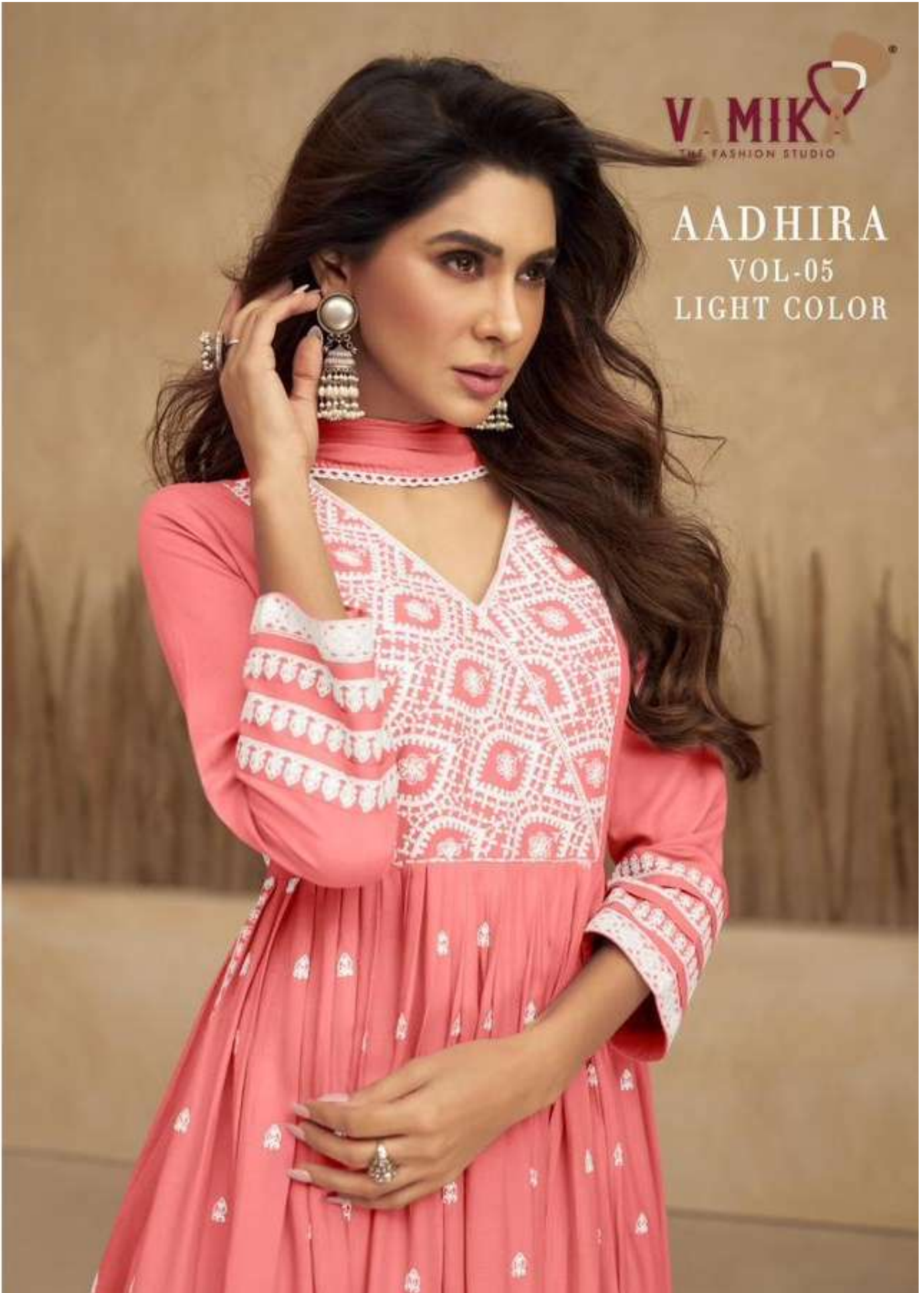
VAMIKA
THE FASHION STUDIO



❖1107-K❖

VAMIK
THE FASHION STUDIO

AADHIRA
VOL-05
LIGHT COLOR





VAMIKA
THE FASHION STUDIO

AADHIRA

VOL-05
LIGHT COLOR



❖ 1107-K ❖



❖ 1107-L ❖



❖ 1107-O ❖



❖ 1107-M ❖



❖ 1107-N ❖



AADHIRA
VOL-05
LIGHT COLOR