



MOHMANTHAN™

Royal



MAHOTSAV®
GROUP



Enigma



Create an illusion of charming beauty
with this magnetic black Saree, where
ebony depths kindle desire.

-----TEMPTING-----

-----NOIRELEGANCE-----

.....
Fabric: Satin Silk Crepe
Accessories: Belt, Redy Blouse
.....

23312



Enter a realm of elegance with this Radiant Yellow Saree, where golden hues ignite a sense of splendor.



Fabric: Organza Silk Crepe
Accessories: Belt, Reddy Blouse

23311



DELICATE CORAL CHARISMA

Find enchanting peace within peachy-kindle alluring tones. Uplift yourself with an essence through shades that resonate with captivating beauty.



Fabric: Organza Silk Crepe
Accessories: Belt, Rody Blouse

23313

Embody yourself in a dark mystery, evoking an irresistible charm that's both graceful and magnetic. Let each drape tell a tale of irresistible emotions.



Fabric: Satin Silk Crepe
Accessories: Belt, Rody Blouse
23312



MOHMANTHAN™



Enigma

PRESENTING

DISCOVER YOUR
A L L U R E

Step into the domain of "Enigma" a captivating journey into the finesse of women's fashion. This compilation, under the brand of Mohmanthan, delves into a narrative where each article whispers tales of distinctiveness and flair. Every design finds its muse in life's enigmas, giving birth to a charm that's truly one-of-a-kind.

"Enigma" reveres the unsaid, a tribute to the enigmatic attributes defining every woman. The thoughtfully curated assortment captures the core of feminine vigor and composure, presenting a fusion of outfits resonating with the diverse dimensions of contemporary womanhood.

Within these pages, you'll uncover an orchestra of hues and outlines, with each piece reflecting assurance and individuality. Catering to a range of tastes, from casual nonchalance to refined sophistication, "Enigma" empowers women to vocalize bold narratives through their fashion preferences.

As we invite you to traverse the mystique inherent in every woman, recognize that this catalog is not just a collection of garments, but an embodiment of the vibrant personas shaping our reality.

Explore, accept, and relish the allure that's distinctly yours.



MOHMANTHAN™

Royal



MAHOTSAV®
GROUP



Enigma



23301



23302



23303



23304



23309



23310



23311



23305



23306



23307



23308



23312



23313



MOHMANTHAN™



MAHOTSAV
GROUP

A CASCADE OF LIGHT
BROWNS WITH EARTHY HUES

Radiant as a summer sunrise, this elegant saree intertwines chocolate-light brown shades with baked earthy harmonious fusion of nature-inspired style.



Fabric: Silk Crepe Georgette
Accessories: Belt, Reddy Blouse

23301

*Amidst this palette of calm blue, her beauty emanates an electrifying allure,
creating a mesmerizing blend of serene poise and exhilarating charm.*



.....
Fabric: Satin Silk Crape
Accessories: Belt, Reddy Blouse, Jacket
.....
23302

VIBRANT BLUE CHARM

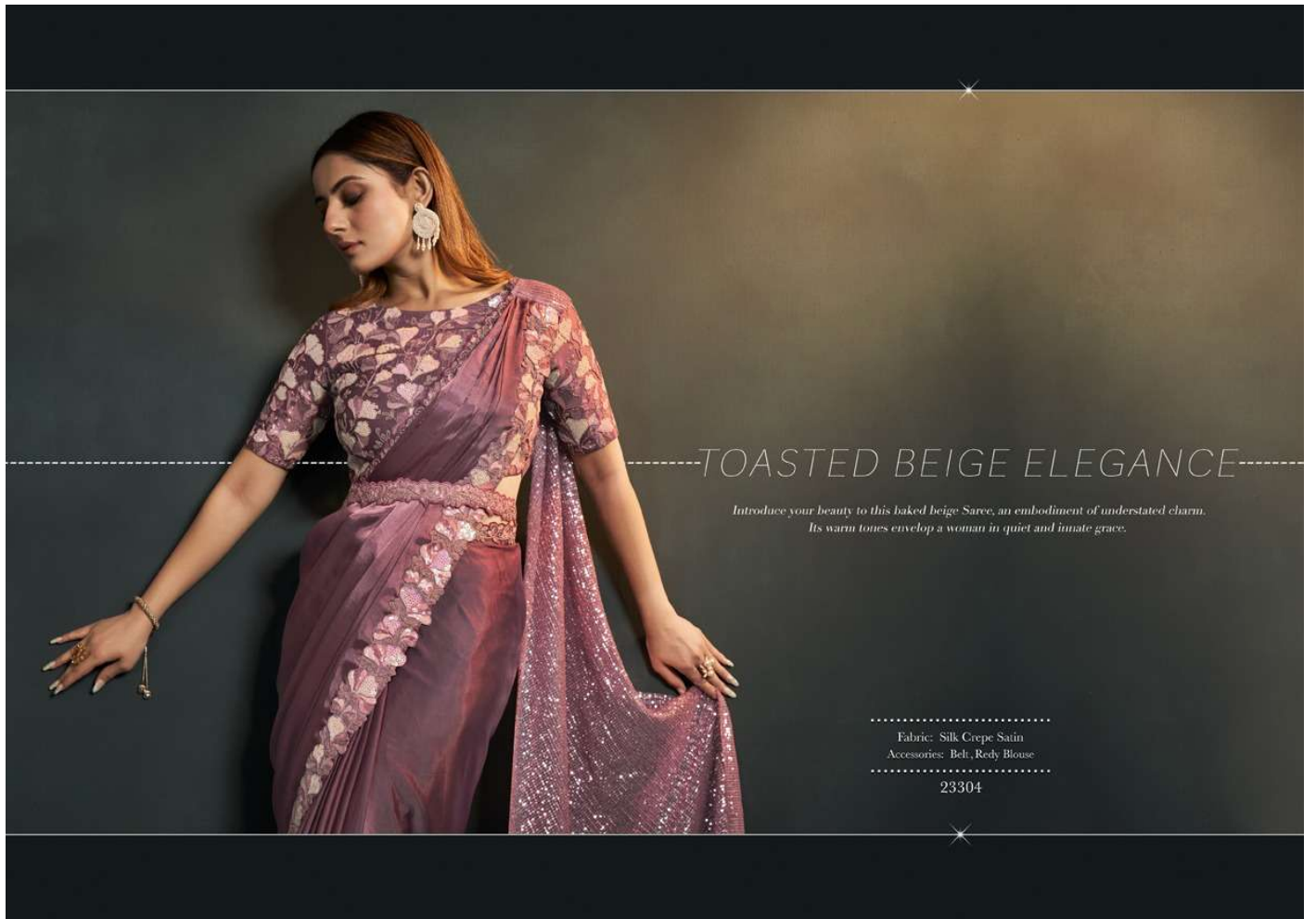
Experience tranquility with the Vibrant Blue Sarve, where cool blue tones evoke serene emotions.



100
FUSION SAREE

Fabric: Satin Silk Crape
Accessories: Belt, Redy Blouse, Jacket

23302



-----TOASTED BEIGE ELEGANCE-----

*Introduce your beauty to this baked beige Saree, an embodiment of understated charm.
Its warm tones envelop a woman in quiet and innate grace.*

.....
Fabric: Silk Crepe Satin
Accessories: Belt, Redy Blouse
.....

23304

VIVID SPECTRUM GLAMOUR



Wrap your grace in this Spectrum-Inspired Saree, a canvas of multiple hues that mirror a woman's vibrant beauty.



Fabric: Silk Crepe Georgette

Accessories: Belt, Rody Blouse

23303

-----CHARISMATIC STERLING GREY-----

*With each fold, you capture a different shade, symbolizing a testament to her elegance,
where colours blend in harmony.*



.....
Fabric: Silk Grape Satin
Accessories: Belt, Reddy Blouse
.....

23305

TENDER PINK SERENITY

A perfect tender pink is a reflection of unassuming elegance. This attire honours the beauty that radiates silent power, showcasing a blossoming draped dream.



Fabric: Silk Crêpe Georgette
Accessories: Belt, Reddy Blouse, Jacket

23306



*Adorned in beige, she exudes an enchanting thriving life's subtle tones.
This attire pays homage to enduring beauty that thrives in understatement.*



Fabric: Silk Crepe Satin
Accessories: Belt, Rody Blouse
23304



A flawless gentle light colour that embodies understated sophistication. This saree celebrates the allure that exudes subdued strength, presenting an unfolding vision woven in fabric.



.....
 Fabric: Silk Crepe Georgette
 Accessories: Belt, Reddy Blouse, Jacket

 23306



Capture the desires with the fusion of pink and baked mud shades that reflects a woman's ageless grace, echoing the earthy elegance inherent in neutral tones.



Fabric: Silk Crepe Satin
Accessories: Belt, Reddy Blouse

23308

GLISTENING MOONLIGHT ELEGANCE-----

With the ethereal charm of moonlit nights, this attire encapsulates a woman's magnetic elegance through shades that echo the moon's soft glow.

Multi-Purpose Saree



Fabric: Pattern Jari Georgette
Accessories: Belt, Reddy Blouse, Jacket

23309

A silver tone capture the mystique of moonlit serenity, portraying a charm that weaves an enchanting narrative, where each drape tells a story of serene confidence.



Fabric: Pattern Jani Georgette
Accessories: Belt, Reddy Blouse, Jacket

23309

Step into elegance with the Burgundy Maroon Saree, where shades of maroon make you a woman with an aura of poise and allure with capturing spirit.



Fabric: Silk Crepe Satin
Accessories: Belt, Reddy Blouse

23310