



jr  
JOH RIVAAJ

# JANELLE

Vol-910



In this sandstone ensemble inspired by Indian paisley

91004



JOH RIVAAJ

**EARTHY  
COMPOSITIONS  
LOOK LIKE  
ADREAM**  
The beauty of a woman is not in a facial mode  
but the true beauty in a woman is  
reflected in her soul.....







jr  
JOH RIVAAJ

**Be  
you**  
Accepting the cultures  
and traditions with  
love and respect.



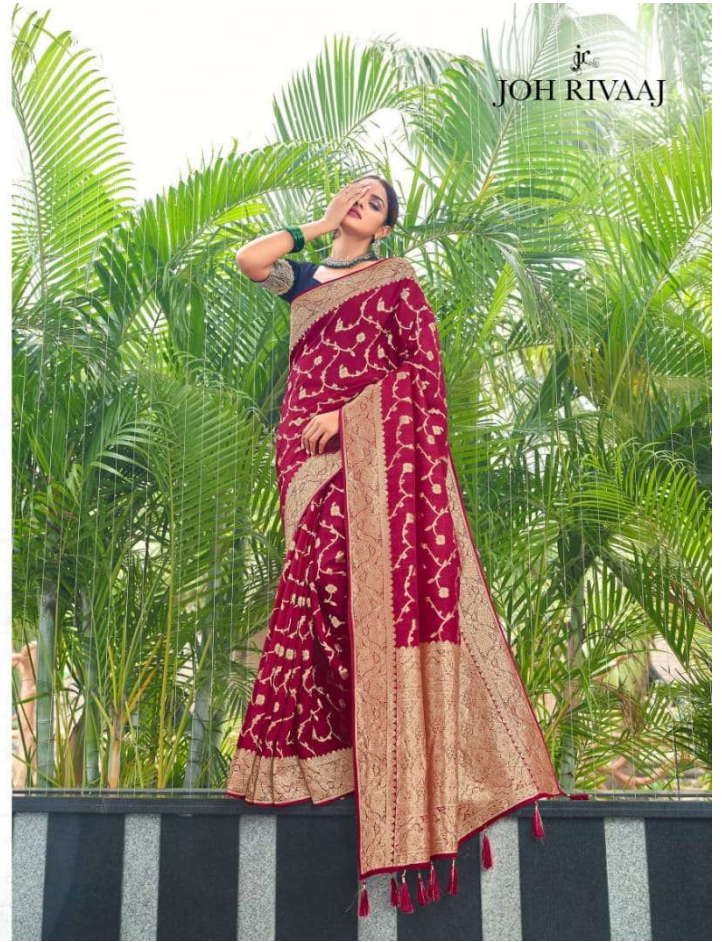


**QUAINT &  
HYPNOTIC**

that are rendered in  
colours of life.



91007







91001



91002



91003



91007



91008



91004



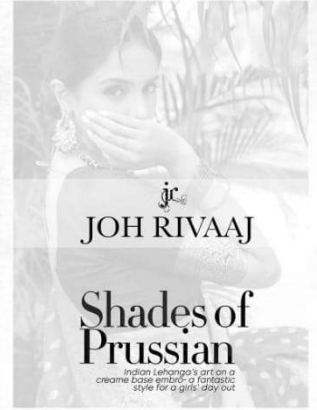
91005



91006



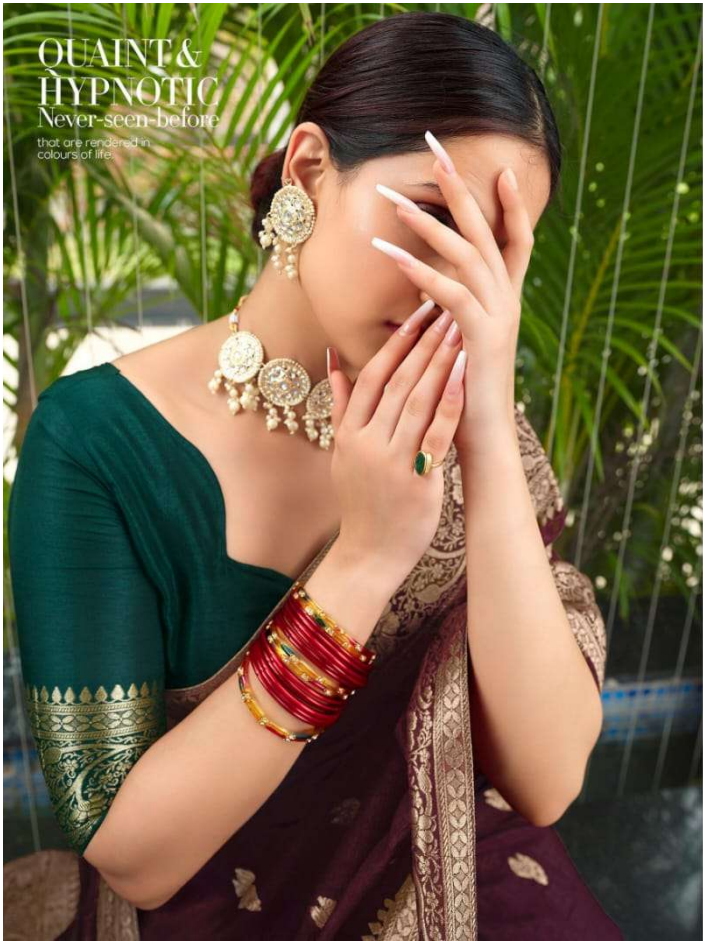
91009



JOH RIVAAJ

Shades of Prussian

Indian Lehanga's art on a cream base embroid-a fantastic style for a girls' day out



91009



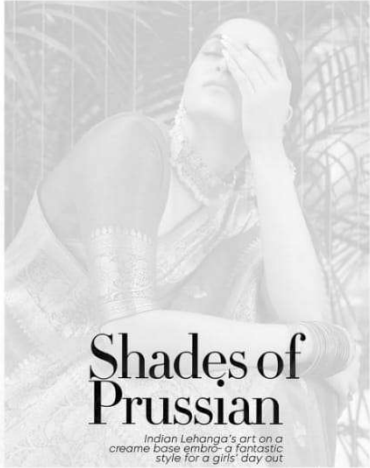








jr  
JOH RIVAAJ



**Shades of Prussian**  
Indian Lehanga's art on a cream base embroidery fantastic style for a girls' day out





JOH RIVAAJ

Beauty awakens the soul to act.  
I don't think of all the misery but of the beauty that still remains.  
Endurance is beauty.  
Beauty is in the heart of the beholder.

91006

The advertisement features two smaller images of the woman in the saree. The top image shows her with her hands clasped near her face, similar to the main image. The bottom image shows her in profile, looking upwards. The text 'JOH RIVAAJ' is positioned above the images. Below the images is a quote, and at the bottom right is a small logo with the number '91006'.



  
**JOH RIVAAJ**

<b>JANELLE</b>		
<b>SR NO.</b>	<b><i>D NO.</i></b>	<b>RATE</b>
<b>1</b>	<b><i>janelle-91001</i></b>	<b>1995/-</b>
<b>2</b>	<b><i>janelle-91002</i></b>	<b>1995/-</b>
<b>3</b>	<b><i>janelle-91003</i></b>	<b>1995/-</b>
<b>4</b>	<b><i>janelle-91004</i></b>	<b>1995/-</b>
<b>5</b>	<b><i>janelle-91005</i></b>	<b>1995/-</b>
<b>6</b>	<b><i>janelle-91006</i></b>	<b>1995/-</b>
<b>7</b>	<b><i>janelle-91007</i></b>	<b>1995/-</b>
<b>8</b>	<b><i>janelle-91008</i></b>	<b>1995/-</b>
<b>9</b>	<b><i>janelle-91009</i></b>	<b>1995/-</b>



G  
L  
A  
M  
O  
R  
F  
I  
N  
E  
T  
O  
U  
C  
H

THE

# QUEEN

OF  
CULTURE

glimpse of heaven



JOH RIVAAJ

Q  
E  
E  
N  
O  
F  
C  
U  
L  
T  
U  
E







91002

The beauty of a woman is not in a facial mode but the true beauty in a woman is reflected in her soul.....



JOH RIVAAJ





jr  
JOH RIVAAJ

# JANELLE

Vol-910



Euphony  
of deep  
hues



91005

Beauty awakens the soul to act.  
I don't think of all the misery but of the beauty that still remains  
Endurance is beauty.  
Beauty is in the heart of the beholder.

JOH RIVAAJ

