

ZAHA

SERSHA

Vol-4

10232 HITS COLORS



**SERSHA**

Vol-4  
10232 HITS COLORS

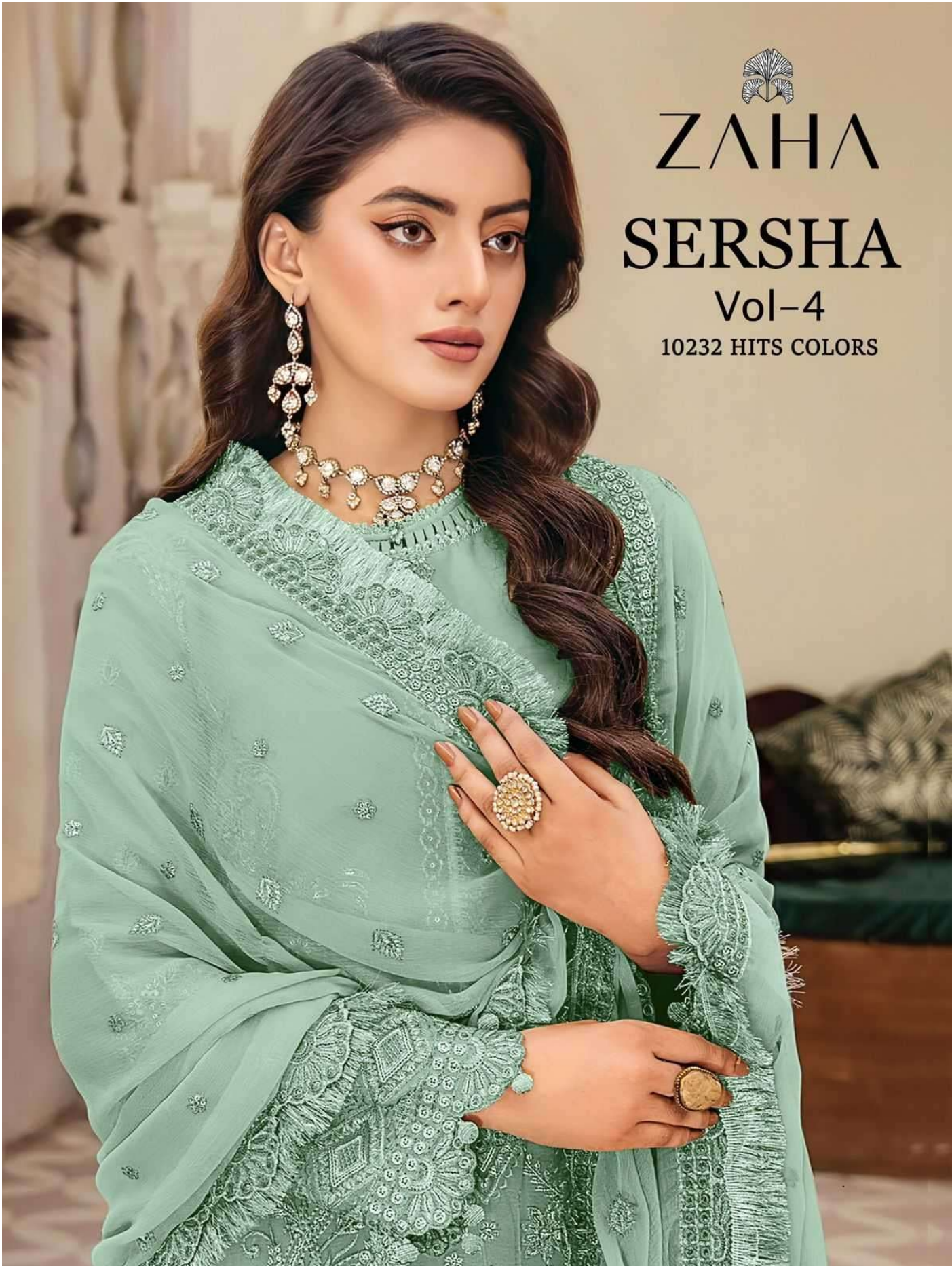
**TOP** Organza  
with Embroidery  
(Cut-2.5 Mtr )

**ZAHA**

**BOTTOM-INNER** Dull santoon  
(Cut-4.20 Mtr )

**D.No.10232-C**

**DUPATTA** Organza  
with Embroidery  
(Cut-2.5 Mtr )



ZAHA

SERSHA

Vol-4

10232 HITS COLORS

  
**ZAHA**

**SERSHA**

**TOP**  
Organza with  
Heavy Embroidery

**VOL-4**  
**10232 HITS COLORS**  
**BOTTOM-INNER**  
Dull Santoon

**DUPATTA**  
Organza with  
Heavy Embroidery



10232-A



10232-B



10232-C



10232-D



**Z** D.No.102  
TOP Organza with Embroidery (Cut: 2.5 Mtr)  
BOT  
DUPATTA with (Cut: 2.5 Mtr)



**SERSHA**

Vol-4  
10232 HITS COLORS

**TOP** Organza  
with Embroidery  
(Cut-2.5 Mtr )

**ZAHA**

**BOTTOM-INNER** Dull santoon  
(Cut-4.20 Mtr )

**D.No.10232-B**

**DUPATTA** Organza  
with Embroidery  
(Cut-2.5 Mtr )



**ZAHA** D.No.10232-E  
TOP Organza with Embroid (Cut-2.5 Mtr.)  
DUPAT Dull santoon (Cut-4.20 Mtr.)



**SERSHA**

Vol-4  
10232 HITS COLORS

**TOP**  
Organza  
with Embroidery  
(Cut-2.5 Mtr )

**ZAHA**

**BOTTOM-INNER**  
Dull santoon  
(Cut-4.20 Mtr )

**D.No.10232-A**

**DUPATTA**  
Organza  
with Embroidery  
(Cut-2.5 Mtr )





**ZANA** Q.No.1  
TOP Orpiza with... BOTTOM-INNE DUPATTA





**SERSHA**

Vol-4  
10232 HITS COLORS

**TOP**  
Organza  
with Embroidery  
(Cut-2.5 Mtr )

**ZAHA**

**BOTTOM-INNER**  
Dull santoon  
(Cut-4.20 Mtr )

**D.No.10232-D**

**DUPATTA**  
Organza  
with Embroidery  
(Cut-2.5 Mtr )



**ZATA** No.10232-E  
TOP Organza with embroidery BOTTOM-IN-DUR