

M-298 C



**FEBRIC DETAIL**

**TOP:-** PURE DULL ORGANZA EMBROIDERED WORK WITH MOTI WORK  
**BOTTOMINNER:-** SANTOON  
**DUPATTA:-** PURE ORGANZA WITH DIGITAL PRINTS WITH HEAVY EMBROIDERY WORK

☉ DRY CLEAN ONLY.  
✘ DO NOT USE ANY BLEACH OR STAIN REMOVING CHEMICAL.  
☽ IRON THE FABRIC AT MODERATE TEMPERATURE.





M-298 D



**FEBRIC DETAIL**

**TOP:-** PURE DULL ORGANZA EMBROIDERED WORK WITH MOTI WORK

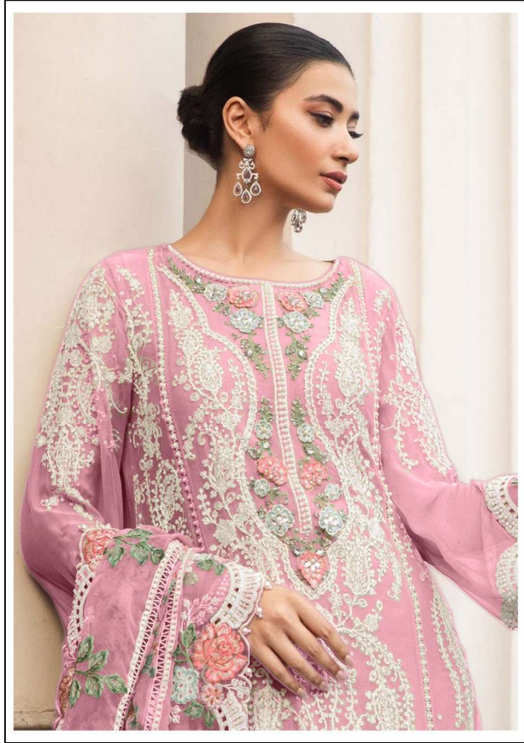
**BOTTOMINNER:-** SANTOON

**DUPATTA:-** PURE ORGANZA WITH DIGITAL PRINTS WITH HEAVY EMBROIDERY WORK

☉ DRY CLEAN ONLY.  
✘ DO NOT USE ANY BLEACH OR STAIN REMOVING CHEMICAL.  
☼ IRON THE FABRIC AT MODERATE TEMPERATURE.







M-298 C



**FEBRIC DETAIL**

**TOP:-** PURE DULL ORGANZA EMBROIDERED WORK WITH MOTI WORK  
**BOTTOMINNER:-** SANTOON  
**DUPATTA:-** PURE ORGANZA WITH DIGITAL PRINTS WITH HEAVY EMBROIDERY WORK

☉ DRY CLEAN ONLY.  
✘ DO NOT USE ANY BLEACH OR STAIN REMOVING CHEMICAL.  
☽ IRON THE FABRIC AT MODERATE TEMPERATURE.





**TOP:-** PURE DULL ORGANZA EMBROIDERED WORK  
WITH MOTI WORK  
**BOTTOMINNER:-** SANTOON  
**DUPATTA:-** PURE ORGANZA WITH DIGITAL PRINTS WITH  
HEAVY EMBROIDERY WORK



M-298 A



M-298 B



M-298 C



M-298 D





MUSHQ  
*A brand by shabbir*



FABRIC DETAIL:  
TOP: PURE SILK ORGANZA OVERLAY  
AND NETT BODICE  
BOTTOM: COMBED COTTON  
DRESS: PURE ORGANZA





M-298 A



**FEBRIC DETAIL**

**TOP:-** PURE DULL ORGANZA EMBROIDERED WORK WITH MOTI WORK  
**BOTTOMINNER:-** SANTOON  
**DUPATTA:-** PURE ORGANZA WITH DIGITAL PRINTS WITH HEAVY EMBROIDERY WORK

☉ DRY CLEAN ONLY.  
✘ DO NOT USE ANY BLEACH OR STAIN REMOVING CHEMICAL.  
☼ IRON THE FABRIC AT MODERATE TEMPERATURE.

