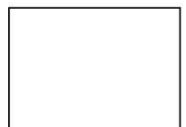


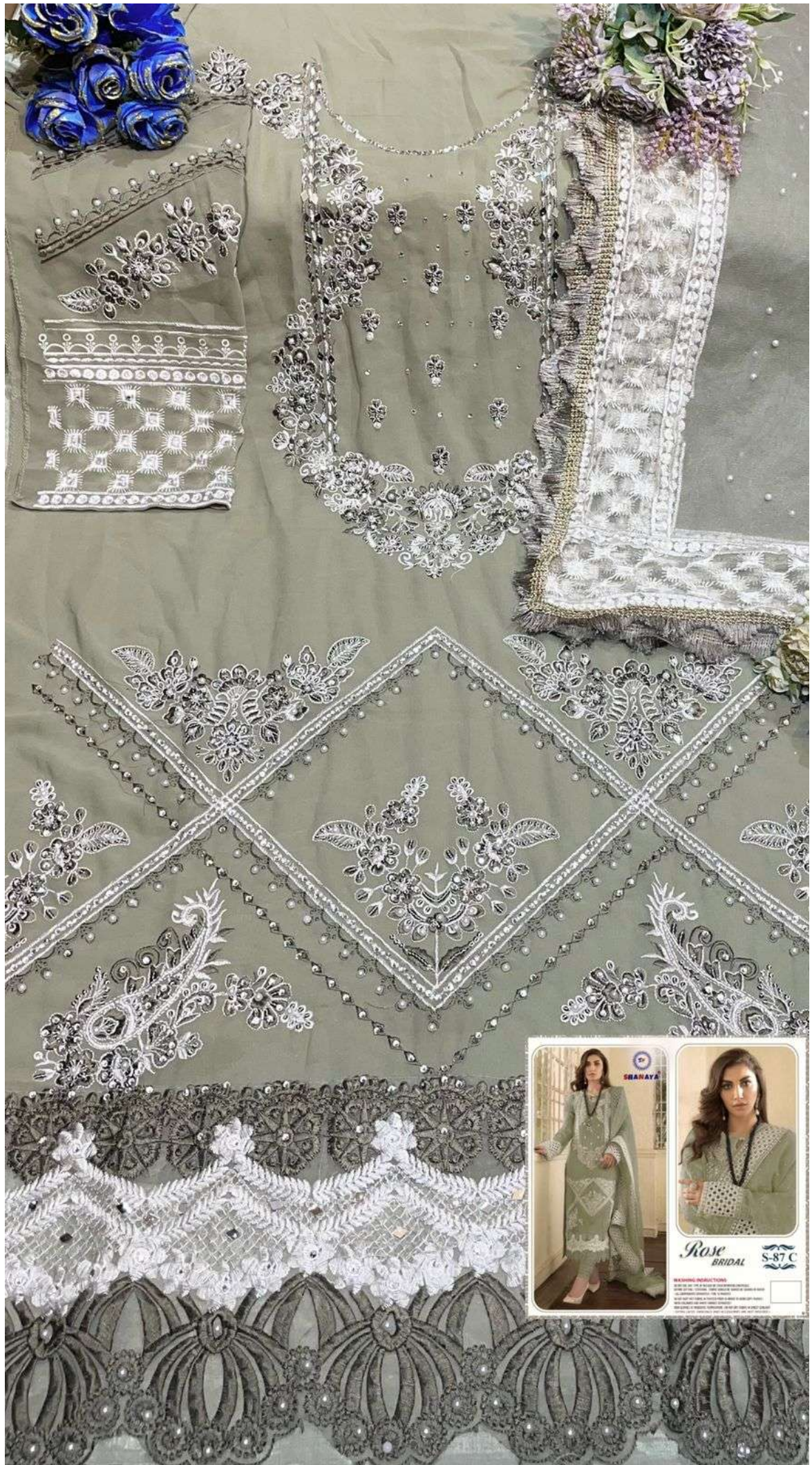
Rose
BRIDAL

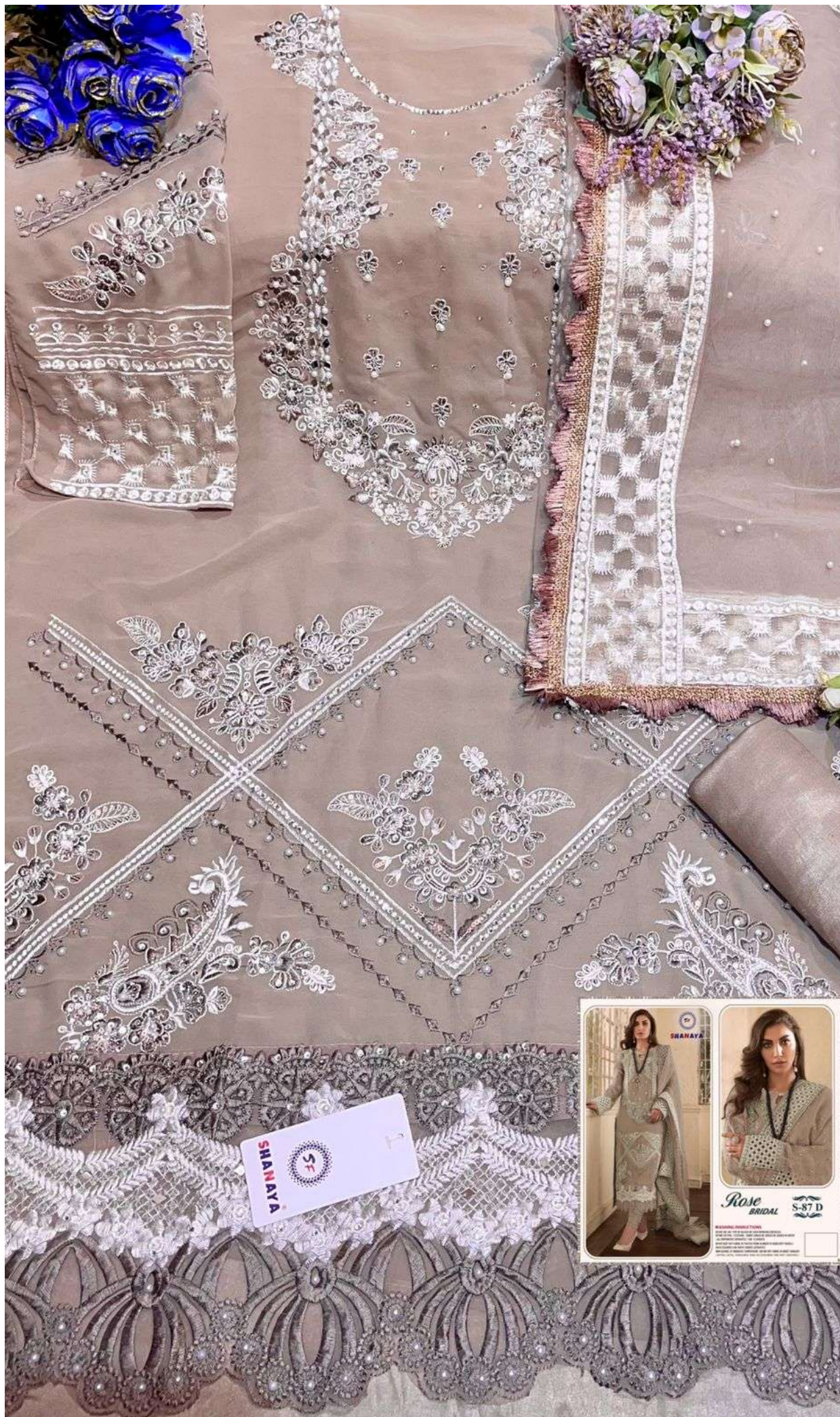
S-87

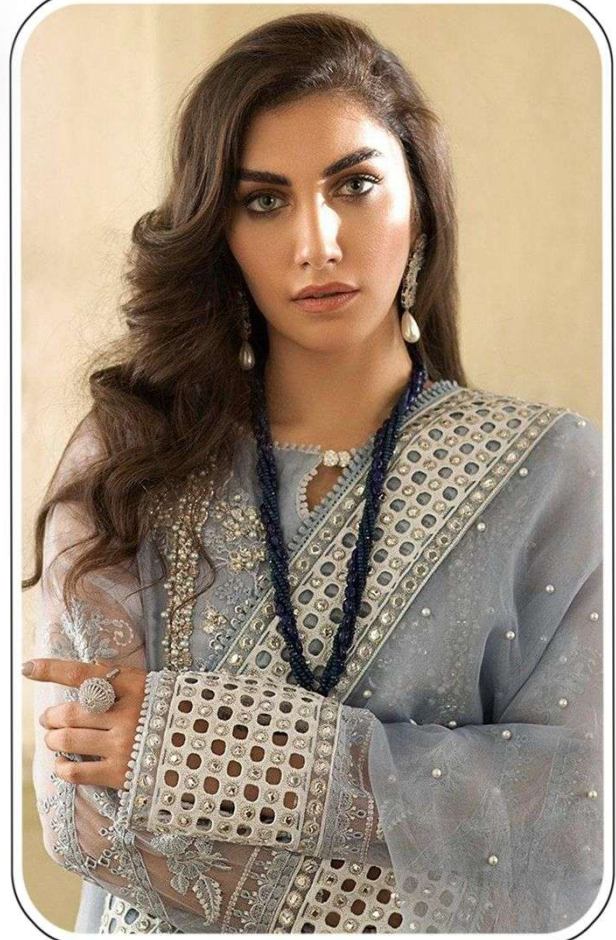
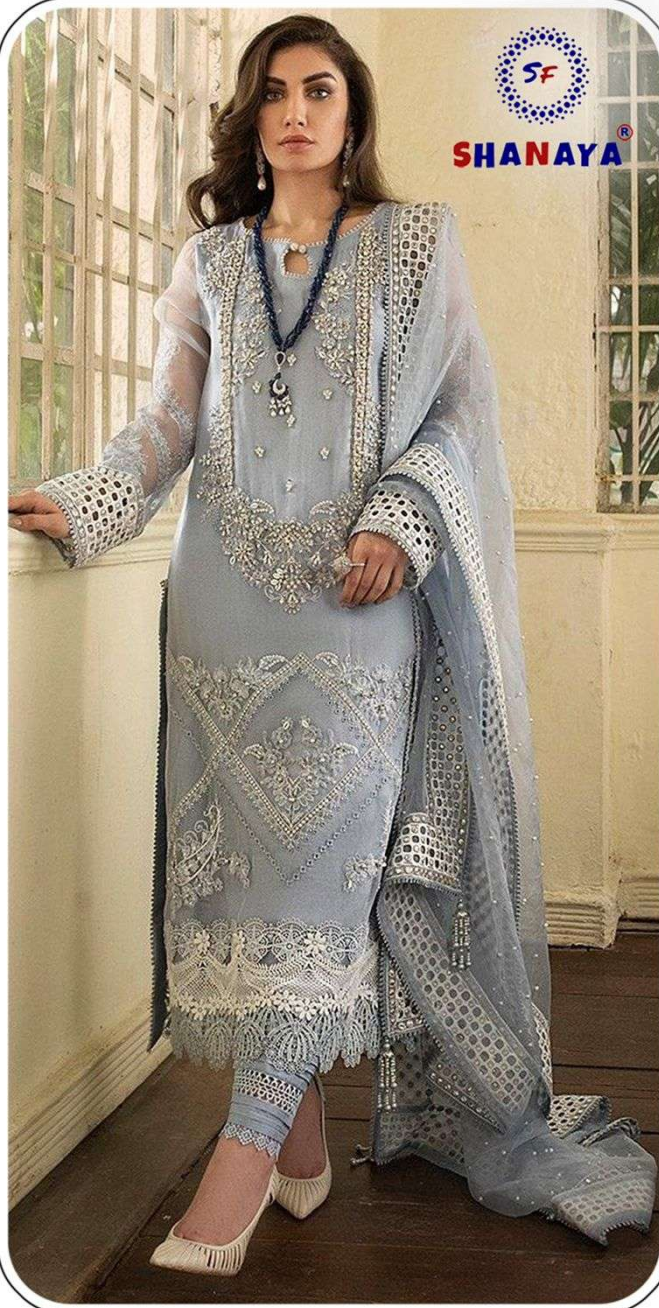
WASHING INSTRUCTIONS

DO NOT USE ANY TYPE OF BLEACH OR STAIN REMOVING CHEMICALS
BEFORE CUTTING / STITCHING, FABRIC SHOULD BE SOAKED IN WATER
(ALL COMPONENTS SEPARATELY) FOR 15 MINUTES
DO NOT KEEP WET FABRIC IN TWISTED FORM IN ORDER TO AVOID COPY MARKS I
WASH COLOURED AND WHITE FABRICS SEPARATELY
IRON CLOTHES AT MODERATE TEMPERATURE I DO NOT DRY FABRIC IN DIRECT SUNLIGHT
(EXTRA LACES, HANGINGS AND ACCESSORIES ARE NOT INCLUDED)







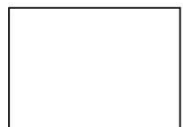


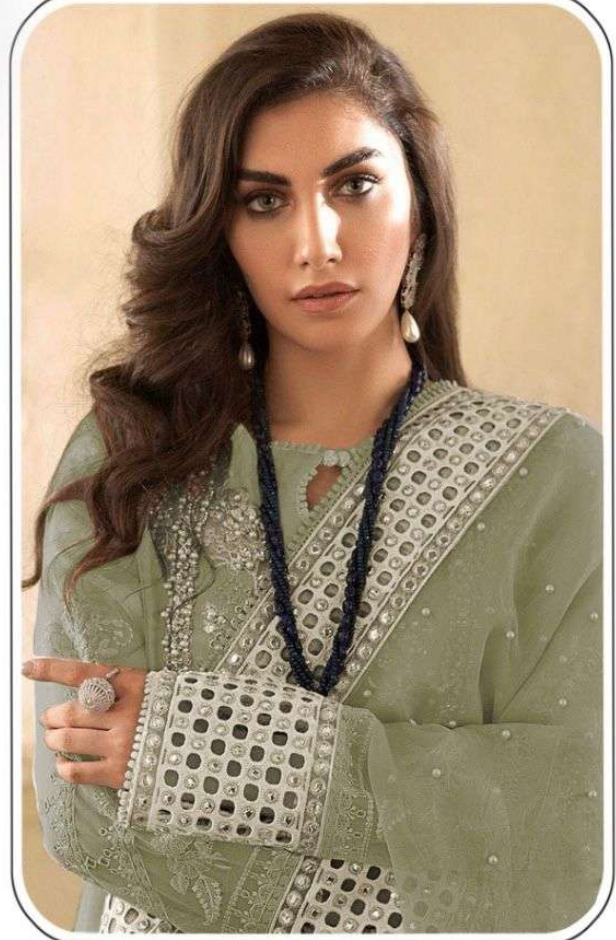
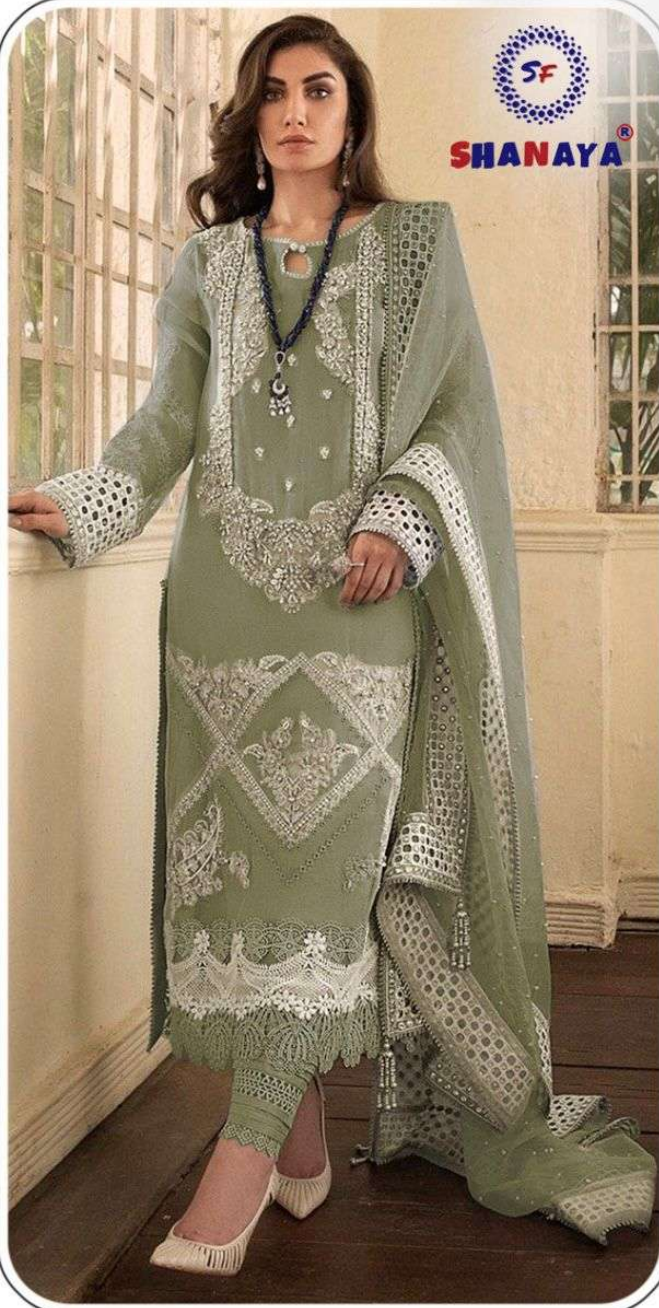
Rose
BRIDAL

S-87

WASHING INSTRUCTIONS

DO NOT USE ANY TYPE OF BLEACH OR STAIN REMOVING CHEMICALS
BEFORE CUTTING / STITCHING, FABRIC SHOULD BE SOAKED IN WATER
(ALL COMPONENTS SEPARATELY) FOR 15 MINUTES
DO NOT KEEP WET FABRIC IN TWISTED FORM IN ORDER TO AVOID COPY MARKS
WASH COLOURED AND WHITE FABRICS SEPARATELY
IRON CLOTHES AT MODERATE TEMPERATURE | DO NOT DRY FABRIC IN DIRECT SUNLIGHT
(EXTRA LACES, HANGINGS AND ACCESSORIES ARE NOT INCLUDED)





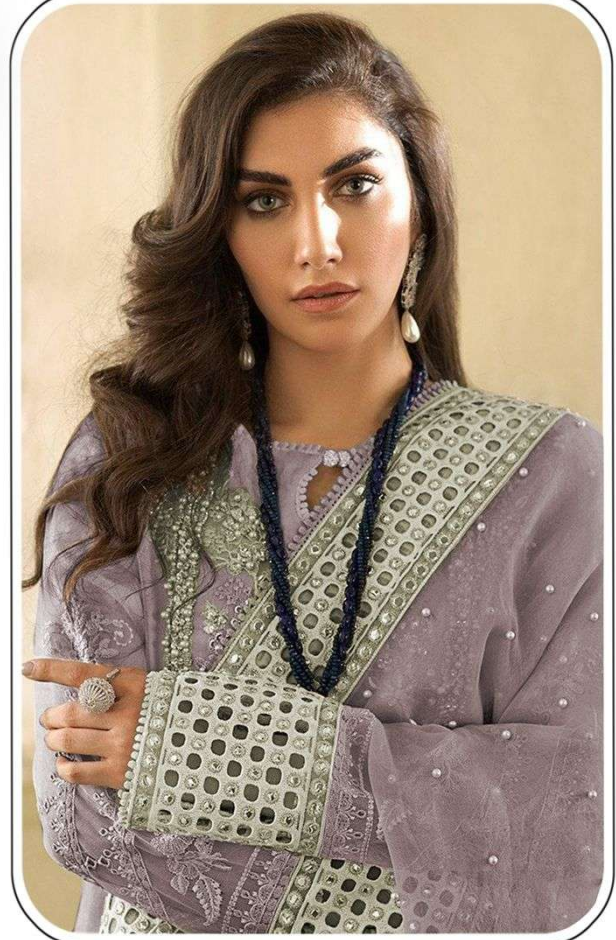
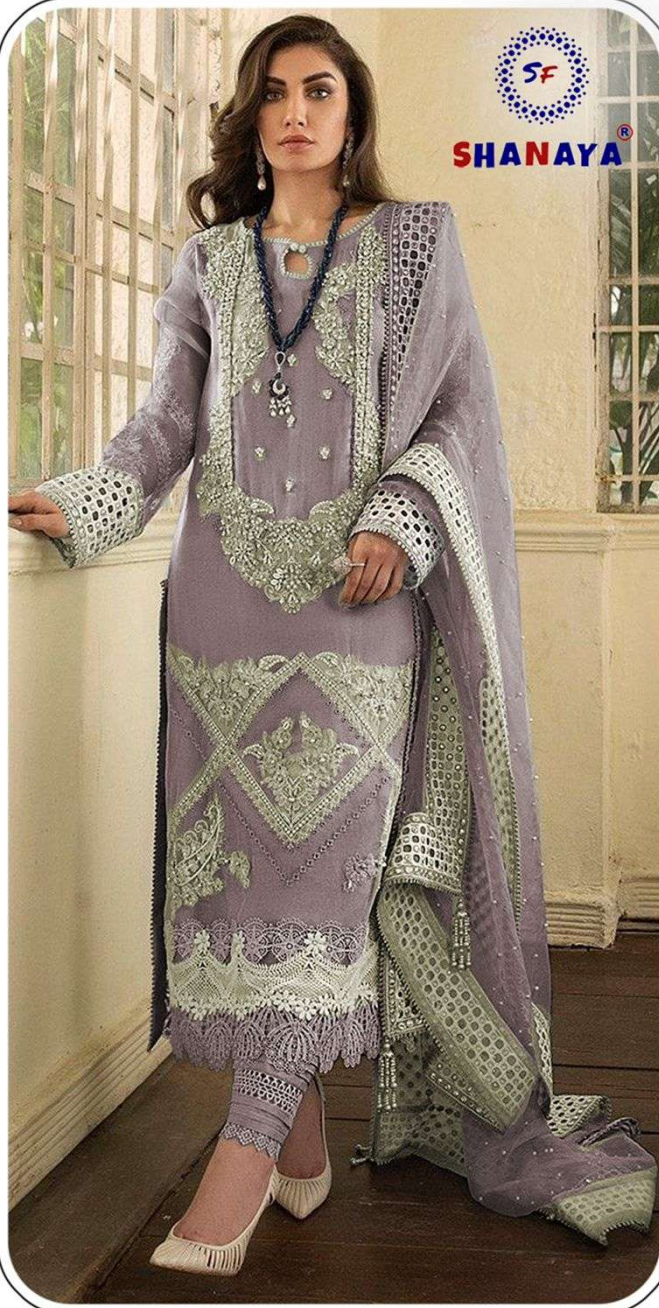
Rose
BRIDAL

S-87 C

WASHING INSTRUCTIONS

DO NOT USE ANY TYPE OF BLEACH OR STAIN REMOVING CHEMICALS
BEFORE CUTTING / STITCHING, FABRIC SHOULD BE SOAKED IN WATER
(ALL COMPONENTS SEPARATELY) FOR 15 MINUTES
DO NOT KEEP WET FABRIC IN TWISTED FORM IN ORDER TO AVOID COPY MARKS |
WASH COLOURED AND WHITE FABRICS SEPARATELY
IRON CLOTHES AT MODERATE TEMPERATURE | DO NOT DRY FABRIC IN DIRECT SUNLIGHT
(EXTRA LACES, HANGINGS AND ACCESSORIES ARE NOT INCLUDED)



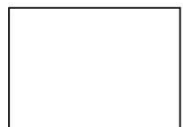


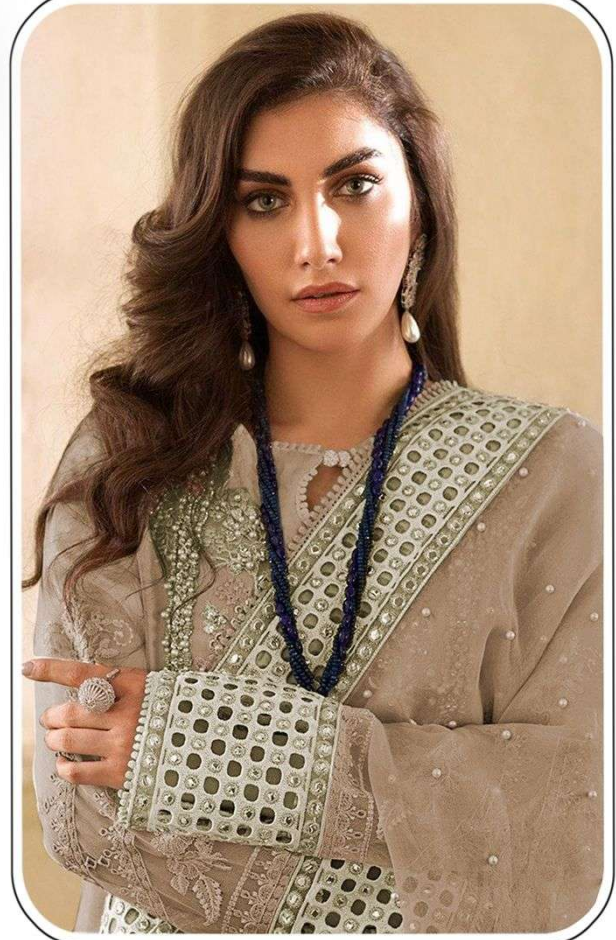
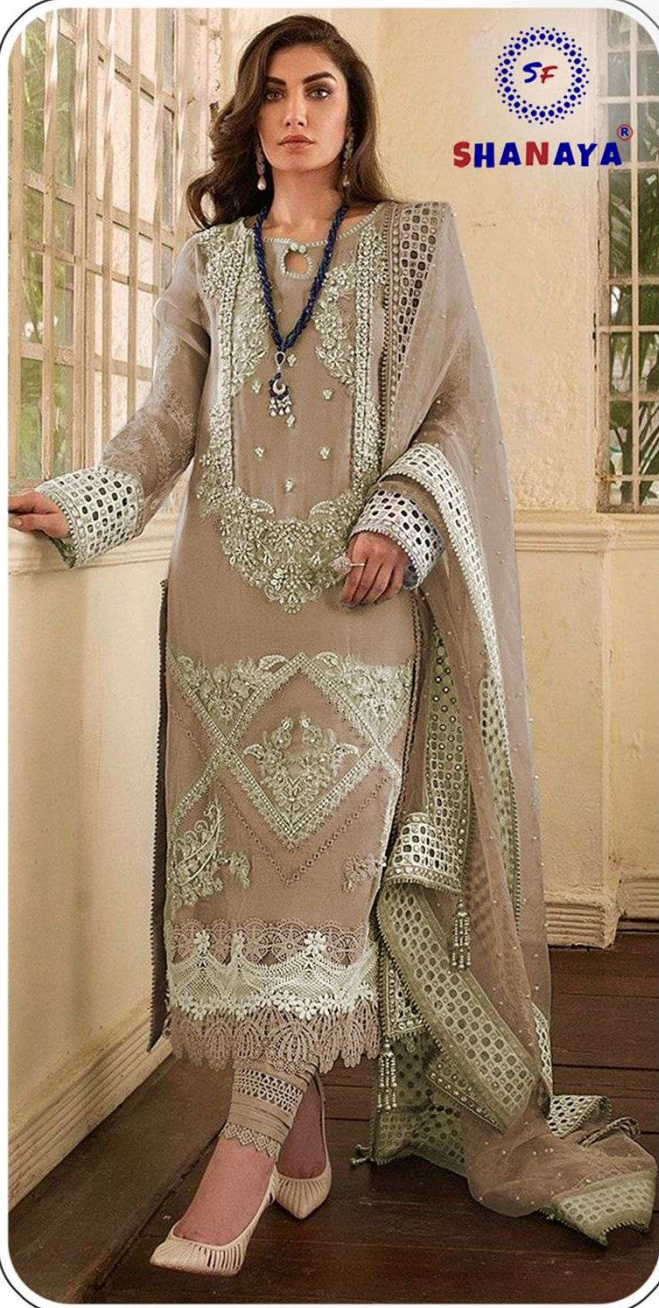
Rose
BRIDAL

S-87 B

WASHING INSTRUCTIONS

DO NOT USE ANY TYPE OF BLEACH OR STAIN REMOVING CHEMICALS
BEFORE CUTTING / STITCHING, FABRIC SHOULD BE SOAKED IN WATER
(ALL COMPONENTS SEPARATELY) FOR 15 MINUTES
DO NOT KEEP WET FABRIC IN TWISTED FORM IN ORDER TO AVOID COPY MARKS
WASH COLOURED AND WHITE FABRICS SEPARATELY
IRON CLOTHES AT MODERATE TEMPERATURE | DO NOT DRY FABRIC IN DIRECT SUNLIGHT
(EXTRA LACES, HANGINGS AND ACCESSORIES ARE NOT INCLUDED)





Rose
BRIDAL

S-87 D

WASHING INSTRUCTIONS

DO NOT USE ANY TYPE OF BLEACH OR STAIN REMOVING CHEMICALS
BEFORE CUTTING / STITCHING, FABRIC SHOULD BE SOAKED IN WATER
(ALL COMPONENTS SEPARATELY) FOR 15 MINUTES
DO NOT KEEP WET FABRIC IN TWISTED FORM IN ORDER TO AVOID COPY MARKS
WASH COLOURED AND WHITE FABRICS SEPARATELY
IRON CLOTHES AT MODERATE TEMPERATURE | DO NOT DRY FABRIC IN DIRECT SUNLIGHT
(EXTRA LACES, HANGINGS AND ACCESSORIES ARE NOT INCLUDED)





BRIDAL
S-87 EDITION



S-87 A



S-87 B

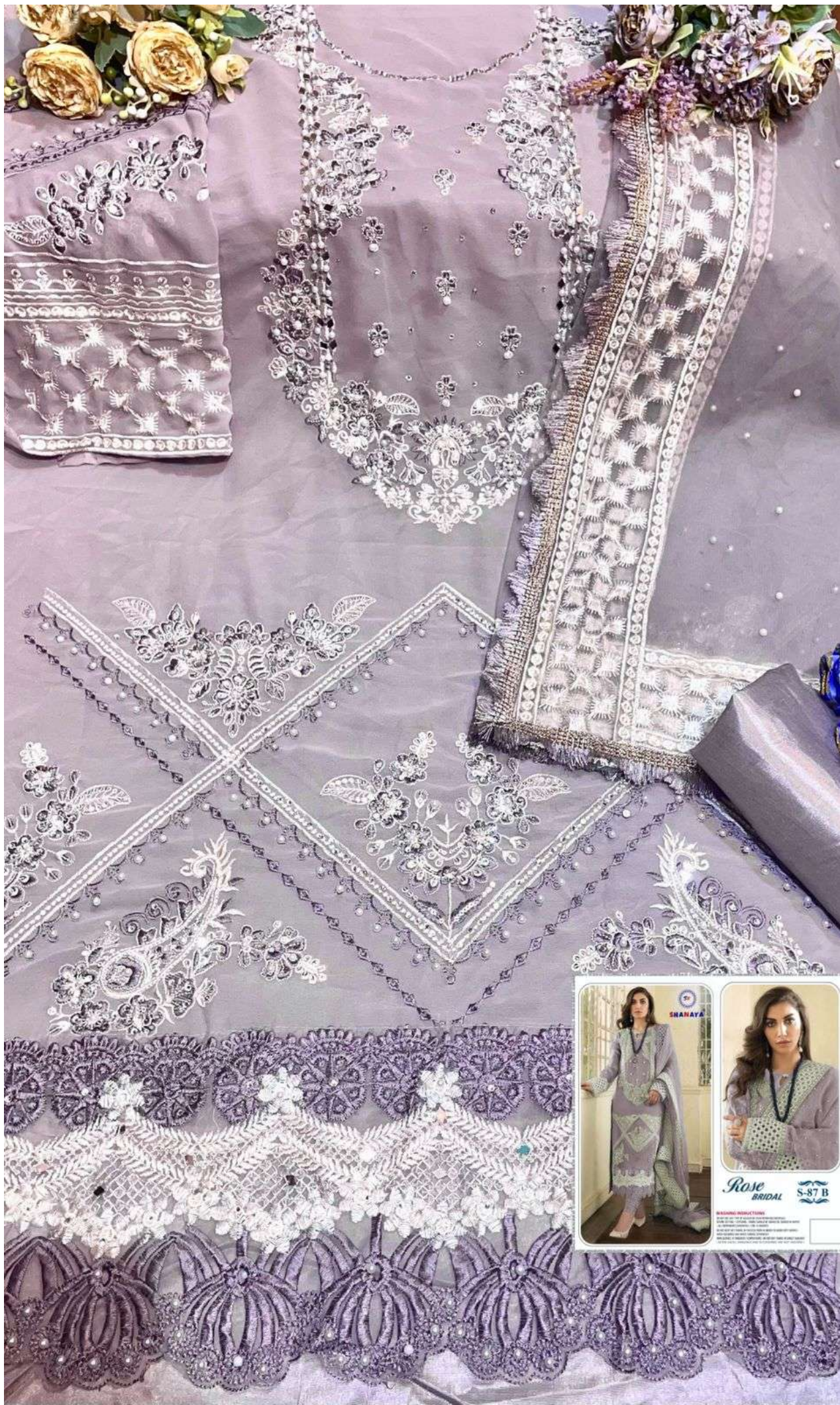


S-87 C



S-87 D





Rose
BRIDAL

S-87 B

WARNING: This dress is made of synthetic fibers. It should not be washed in hot water. It should not be ironed. It should not be dry cleaned. It should not be bleached. It should not be exposed to direct sunlight. It should not be stored in a damp or humid environment. It should not be worn for extended periods of time. It should not be worn by pregnant women. It should not be worn by women with sensitive skin. It should not be worn by women with allergies. It should not be worn by women with asthma. It should not be worn by women with heart disease. It should not be worn by women with diabetes. It should not be worn by women with high blood pressure. It should not be worn by women with low blood pressure. It should not be worn by women with dizziness. It should not be worn by women with fainting spells. It should not be worn by women with seizures. It should not be worn by women with epilepsy. It should not be worn by women with mental illness. It should not be worn by women with physical disabilities. It should not be worn by women with chronic pain. It should not be worn by women with chronic illness. It should not be worn by women with chronic fatigue. It should not be worn by women with chronic stress. It should not be worn by women with chronic anxiety. It should not be worn by women with chronic depression. It should not be worn by women with chronic insomnia. It should not be worn by women with chronic headaches. It should not be worn by women with chronic migraines. It should not be worn by women with chronic nausea. It should not be worn by women with chronic vomiting. It should not be worn by women with chronic diarrhea. It should not be worn by women with chronic constipation. It should not be worn by women with chronic urinary tract infections. It should not be worn by women with chronic vaginal infections. It should not be worn by women with chronic menstrual pain. It should not be worn by women with chronic menstrual irregularities. It should not be worn by women with chronic menstrual bleeding. It should not be worn by women with chronic menstrual cramps. It should not be worn by women with chronic menstrual spotting. It should not be worn by women with chronic menstrual clots. It should not be worn by women with chronic menstrual odor. It should not be worn by women with chronic menstrual discharge. It should not be worn by women with chronic menstrual dryness. It should not be worn by women with chronic menstrual itching. It should not be worn by women with chronic menstrual burning. It should not be worn by women with chronic menstrual stinging. It should not be worn by women with chronic menstrual numbness. It should not be worn by women with chronic menstrual tingling. It should not be worn by women with chronic menstrual numbness. It should not be worn by women with chronic menstrual tingling. It should not be worn by women with chronic menstrual numbness. It should not be worn by women with chronic menstrual tingling.

