

A woman with dark hair pulled back, wearing large ornate earrings and a ring, is seated and looking towards the camera. She is wearing a long-sleeved, knee-length red dress with intricate white floral and geometric embroidery. The dress features a V-neckline with a buttoned placket, a gathered waist, and a wide, flowing skirt. The embroidery is dense and detailed, covering the bodice, sleeves, and a vertical strip down the center of the skirt. The background is a plain, light-colored wall.

VAMIKA
THE FASHION STUDIO

LAKHNAVI
VOL.6-HIT LIST



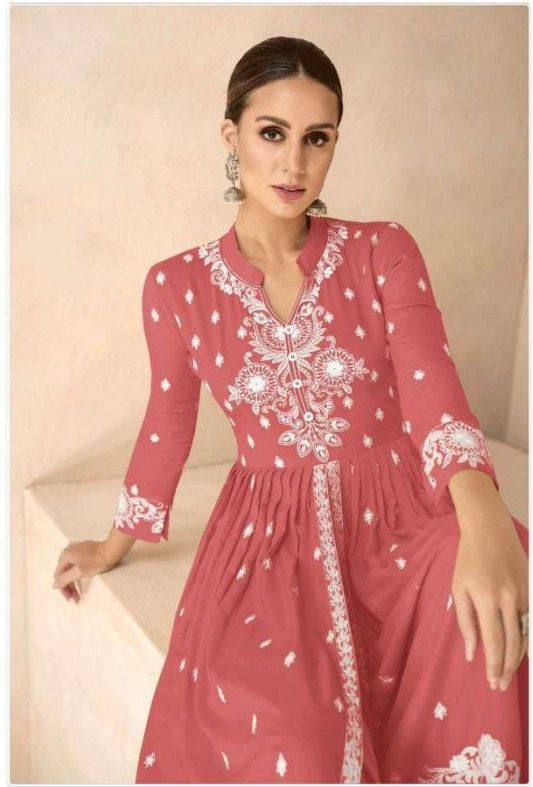
VAMIKA
THE FASHION STUDIO



1031-L



VAMIKA
THE FASHION STUDIO



1031-N



1031-K





1031-O





1031-M





1031-K



1031-L



1031-O



1031-M



1031-N

VAMIKA
THE FASHION STUDIO
LAKHNAVI
VOL.6-HIT LIST

A woman with dark hair pulled back, wearing large ornate earrings and a ring, is seated and looking towards the camera. She is wearing a red long-sleeved top with a white embroidered yoke and floral patterns, and a matching red skirt with a white embroidered border. The background is a plain, light-colored wall.

VAMIKA
THE FASHION STUDIO

LAKHNAVI
VOL.6-HIT LIST