



Simra[®]
SUNRISE OF FASHION

D.No.17 B

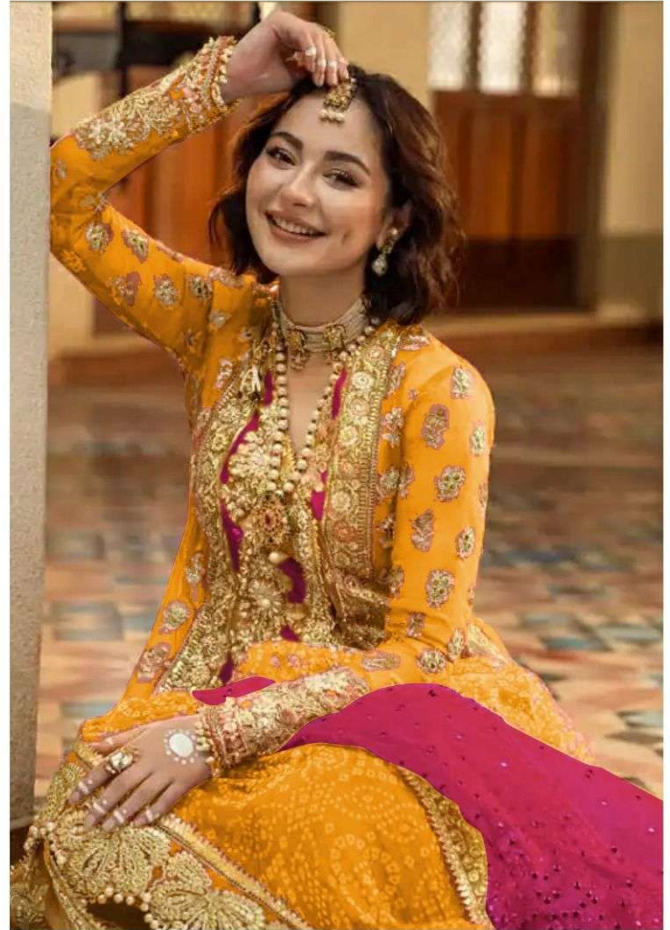


TOP - ORGANZA HEAVY EMBROIDERED
WITH MOTI WORK
BOTTOM + INNER - HEAVY SANTOON
DUPATTA - ORGANZA FOUR SIDE EMBROIDERED
WITH MOTI WORK



Simra[®]
SUNRISE OF FASHION

D.No.17 B



TOP - ORGANZA HEAVY EMBROIDERED
WITH MOTI WORK
BOTTOM + INNER - HEAVY SANTOON
DUPATTA - ORGANZA FOUR SIDE EMBROIDERED
WITH MOTI WORK



Simra[®]
SUNRISE OF FASHION

D.No.17 A



TOP - ORGANZA HEAVY EMBROIDERED
WITH MOTI WORK
BOTTOM + INNER - HEAVY SANTOON
DUPATTA - ORGANZA FOUR SIDE EMBROIDERED
WITH MOTI WORK



D.No.17 A



D.No.17 B

Simra[®]
SUNRISE OF FASHION

TOP - ORGANZA HEAVY EMBROIDERED
WITH MOTI WORK
BOTTOM + INNER - HEAVY SANTOON
DUPATTA - ORGANZA FOUR SIDE EMBROIDERED
WITH MOTI WORK



Serene
A PRODUCT OF NEHA EXPORT

Serene
A PRODUCT OF NEHA EXPORT

Serene
A PRODUCT OF NEHA EXPORT



Serene
A PRODUCT OF NEHA EXPORT
D.No.17B



Serena
MADE IN INDIA



Dupatta

Bottom

Serene
A PRODUCT OF
MEGHA EXPORT

Serene
A PRODUCT OF
MEGHA EXPORT

