

Izela  
Vol-1





D.NO.244  
**Izela**

TOP - Cotton With Embroidery  
DRESS/SHAWL - 100% Silk  
DRESS - Cotton

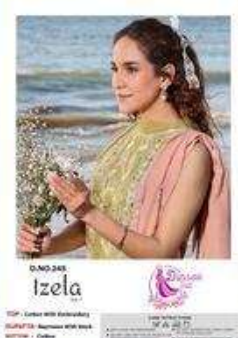


www.dinsaa.com  
021-2511111  
021-2511112





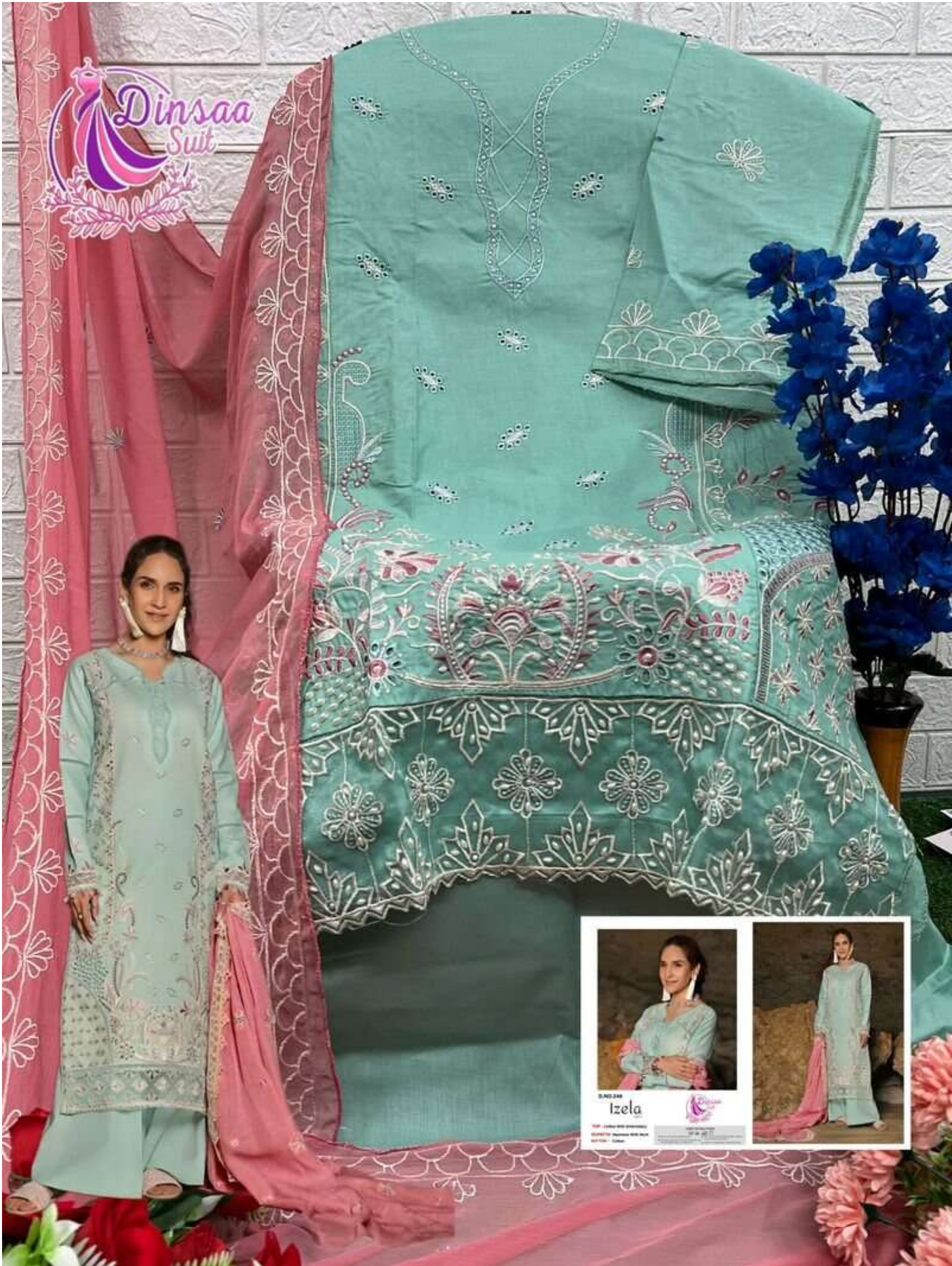
Dinsaa  
Suit



DINSAA  
**Izela**  
100% Cotton With Embroidery  
Sleeves - 3/4 Length With Black  
Buttons - Cotton

DINSAA  
100% Cotton With Embroidery  
Sleeves - 3/4 Length With Black  
Buttons - Cotton





**Dinsaa**  
Suit



BN028

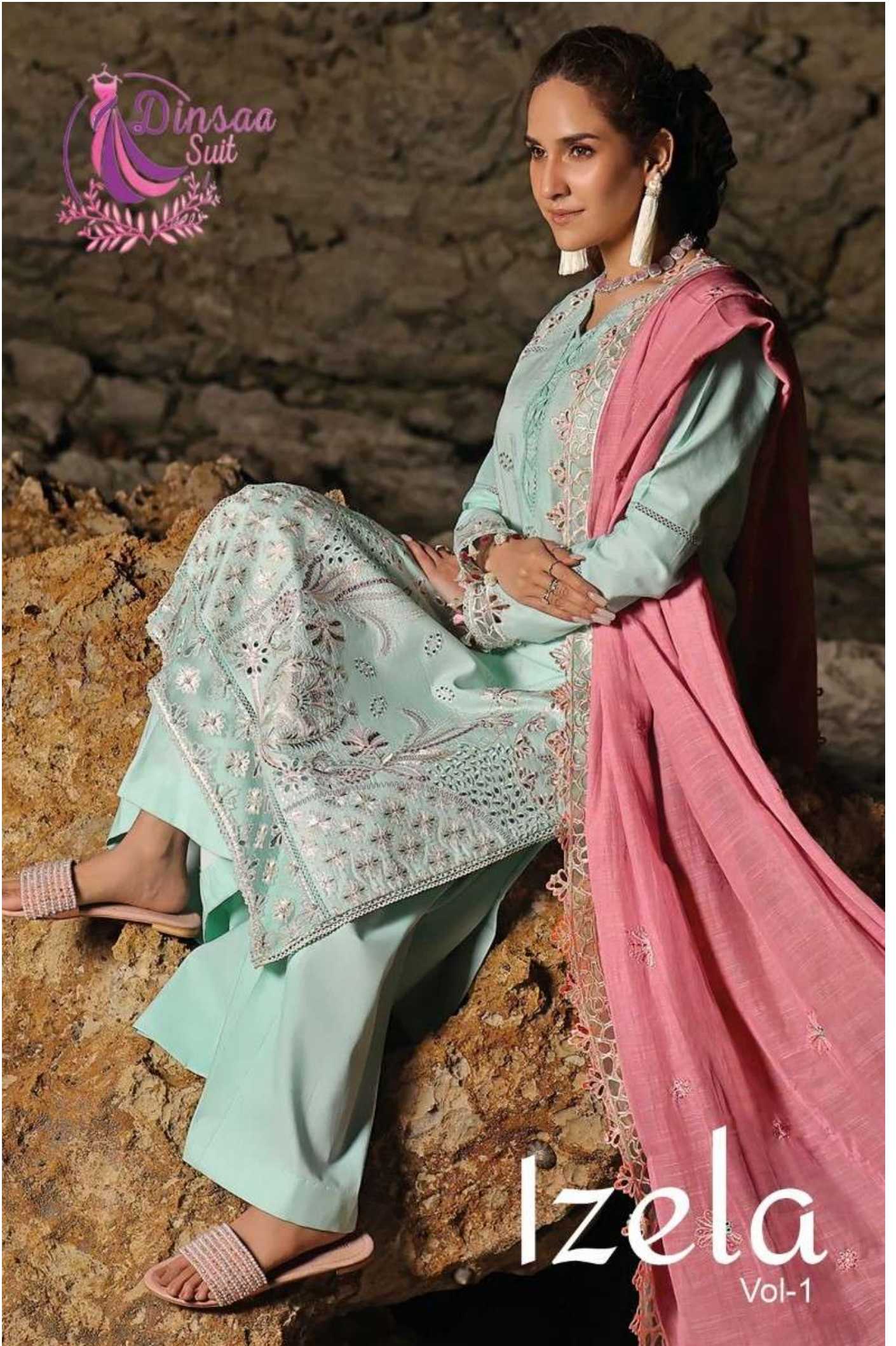
**Izela**

100% Cotton and Polyester  
Washed by Hand with Mild  
Detergent



100% Cotton and Polyester  
Washed by Hand with Mild  
Detergent





Izela  
Vol-1



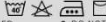


D.NO.244  
**Izela**  
Vol-1



**TOP** - Cotton With Embroidery  
**DUPATTA** - Nazmeen With Work  
**BOTTOM** - Cotton

**CARE INSTRUCTIONS**



- DRY CLEAN RECOMMENDED
- DO NOT USE ANYTYPE OF BLEACH OR STAIN REMOVING CHEMICALS
- DO NOT OVEREXPOSE DAMP FABRIC TO STRONG SUNLIGHT
- IRON AT MODERATE TEMPERATURE





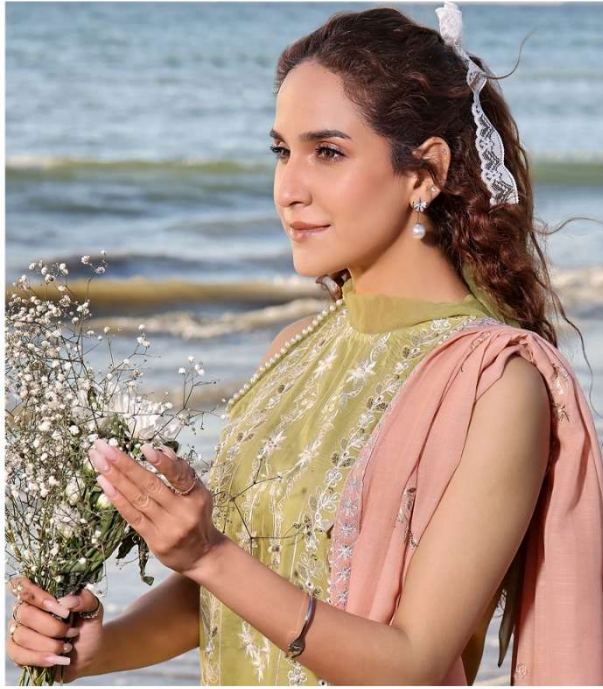
*Her gait knows no boundaries. Her elegance knows no limits. Her charm is a source of inspiration and wonderment across the world. Looking simply divine in her matchless attire, she rules the world with her smile. Her admirers follow, entranced*



D.245





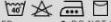


D.NO.245  
**Izela**  
 Vol-1



**TOP** - Cotton With Embroidery  
**DUPATTA** - Nazmeen With Work  
**BOTTOM** - Cotton

**CARE INSTRUCTIONS**



- DRY CLEAN RECOMMENDED
- DO NOT USE ANYTYPE OF BLEACH OR STAIN REMOVING CHEMICALS
- DO NOT OVEREXPOSE DAMP FABRIC TO STRONG SUNLIGHT
- IRON AT MODERATE TEMPERATURE











D.246





D.NO.246

# Izela

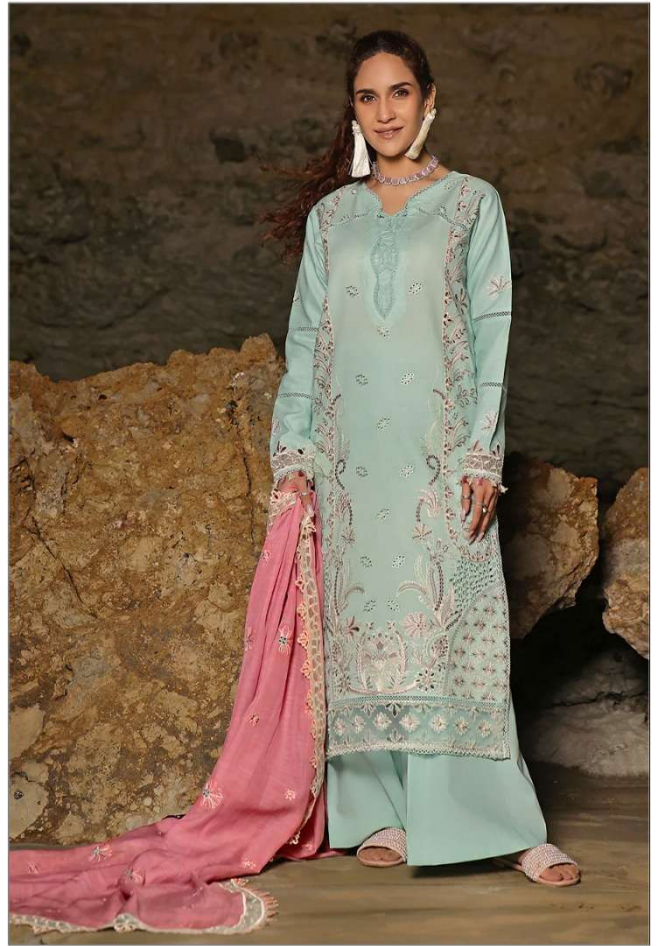
Vol-1



- TOP** - Cotton With Embroidery
- DUPATTA** - Nazmeen With Work
- BOTTOM** - Cotton

#### CARE INTRUCTIONS

- DRY CLEAN RECOMMENDED
- DO NOT OVEREXPOSE DAMP FABRIC TO STRONG SUNLIGHT
- DO NOT USE ANYTYPE OF BLEACH OR STAIN REMOVING CHEMICALS
- IRON AT MODERATE TEMPERATURE







D.244



D.245



D.246



Top- Cotton With Embroidery  
Bottom - Cotton  
Dupatta - Nazmeen With Work

# Izela

Vol-1