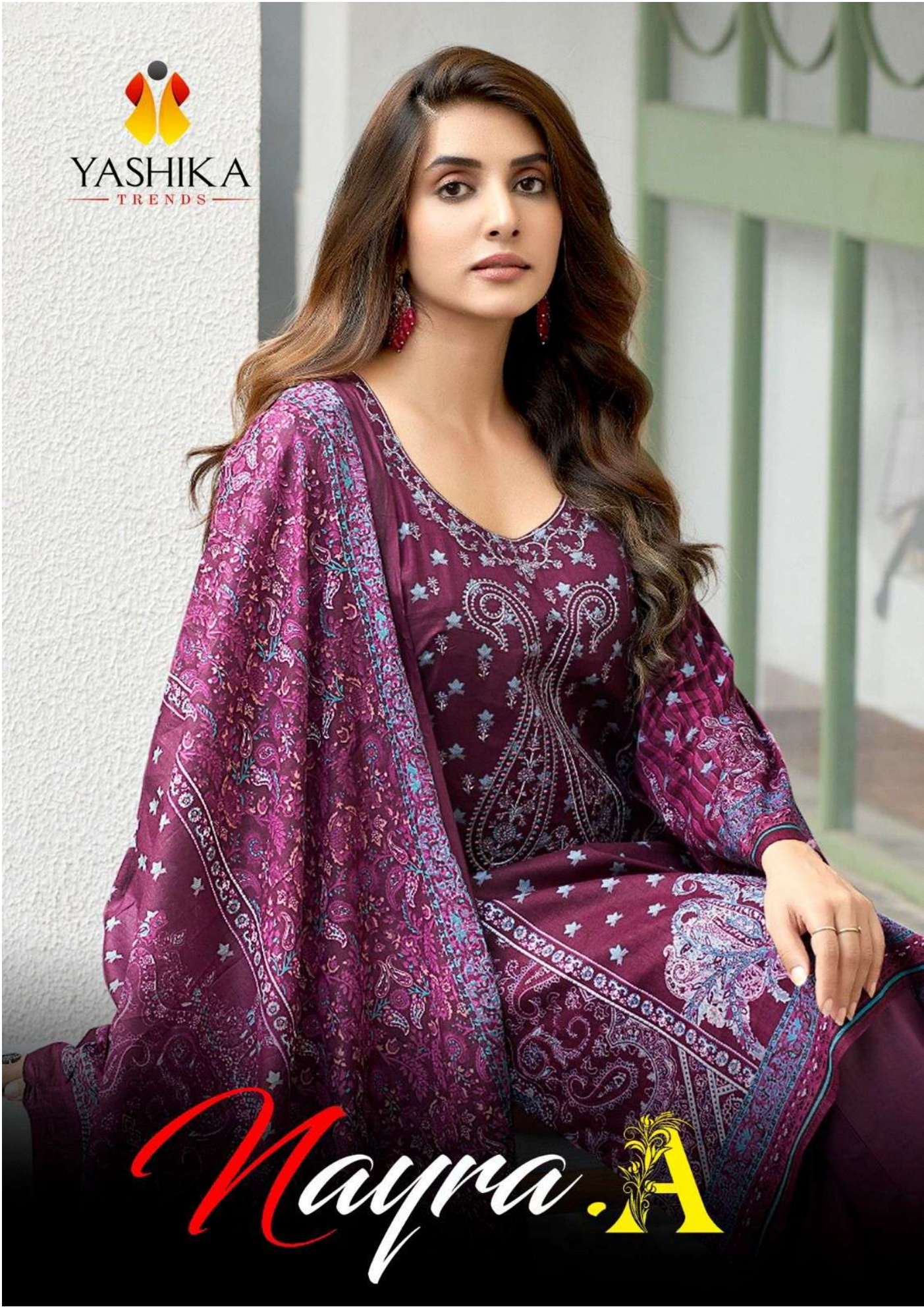




YASHIKA  
TRENDS

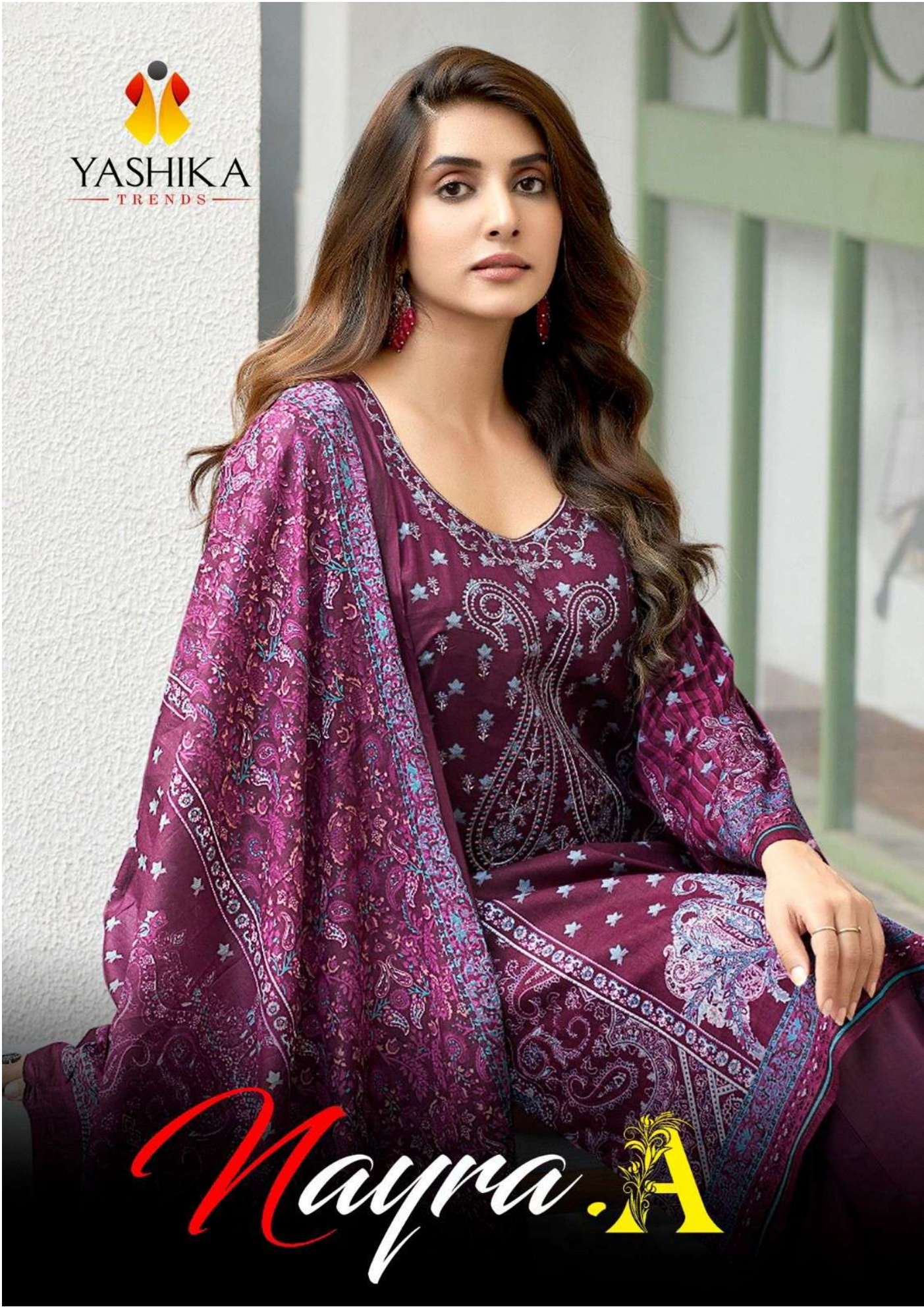


Mayra.A





YASHIKA  
TRENDS



Mayra.A





1001



1002



1003



1004



1005



1006



1007



1008





YASHIKA  
TRENDS  
SURAT











AS THEY SAY, STYLE MAKES AN INDIVIDUAL AND SALWAR KAMEEZ SUITS THIS ADJECTIVE TO THE HILT

**D.NO-1008**







YASHIKA  
TRENDS







YASHIKA  
TRENDS



D.NO-1006











THE SALWAAR KAMEEZ CONSISTS OF 3 ELEMENTS IN IT'S CREATION NAMELY THE KAMEEZ, SALWAR AND A DUPATTA

D.NO-1005







**YASHIKA**  
TRENDS











YASHIKA  
TRENDS



SALWAR KAMEEZ IS SPELLED AND PRONOUNCED DIFFERENTLY BY THE PEOPLE OF DIFFERENT COMMUNITIES, FOR EXAMPLE BY THE MUSLIM COMMUNITY IT IS CALLED SHALWAR QAMEEZ OR SHALWAR QAMIS, BY HINDU SALWAR KAMEEZ AND SOME CALL IT SALWAR CAMIS AND SOME PEOPLE CALL IT SALWAR SUITS.

D.NO-1004







YASHIKA  
TRENDS



THE HOLD OF SALWAR IS FIRM BUT  
ITS SPREAD IS LOOSE WHICH ALLOWS  
FOR FLEXIBILITY. THE WOMEN FOLK  
WEAR A LONG AND LOOSE TUNIC  
KNOWN AS KAMEEZ OVER THE SAL-  
WARS

D.NO-1002















YASHIKA  
TRENDS



THERE ARE FEW THINGS, WHICH ARE A PART AND PARCEL OF INDIAN PSYCHE AND WHOSE REACH SPANS THE WHOLE OF THE COUNTRY PLUS THE VAST INDIAN DIASPORA ABROAD

D.NO-1001







*SALWAR IS A PAJAMA LIKE TROUSERS, WHICH IS DRAWN IN A TIGHT MANNER AT THE WAIST AND THE ANKLES*

*D.NO-1007*











YASHIKA  
TRENDS



WITH A FINE TRADITION AND A COLORFUL PAST, SALWAR KAMEEZ HAS BECOME A FABRIC, WHICH HAS BROUGHT ABOUT A TOUCH OF CLASS TO INDIAN WOMEN



D.NO-1003