





bhkala®

गस
VOL.12





Swastika bhkala



RASS - 2411

Swastika bhkala



RASS - 2411





Swastika bhkala

RASS - 2412



ॐ bhkala

RASS - 2411

bhkala



RASS - 2412



શ્રી bhkala



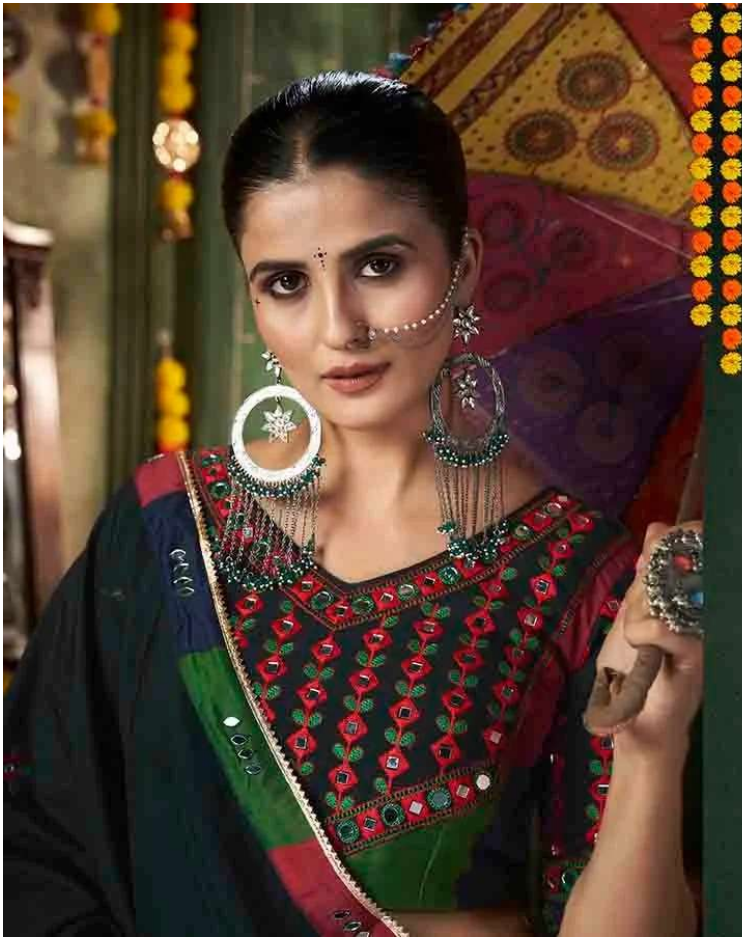
RASS - 2412

શ્રીbhkala



RASS - 2413





❧ bhkala

RASS - 2413

A full-body photograph of the same woman in the same sari, holding a pink and purple striped umbrella. She is standing in a traditional Indian setting with a chandelier and a decorated archway in the background. Below the photo is a small, colorful geometric pattern.





Swastika bhkala



RASS - 2414

Swastika bhkala



RASS - 2414







RASS - 2415



RASS - 2415

Swabhkala



RASS - 2416





bhkala

RASS - 2416



2411



2412



2413



2414

bhkala



2415



2416

गय
VOL.12



Design NO. (SKU)	Color	Lehenga Fabric	Choli Fabric	Dupatta Fabric	Lehenga SIZE (Full Stitched) (M-37 SIZE)	Lehenga Work	Choli Work	Dupatta Work	Dupatta Length (MTR)	Weight (KG)
2411	Black	Maslin Cotton	Maslin Cotton	Maslin Cotton	Choli Chest: 38 INCH Choli Length: 15 INCH Lehenga Wasit: 42 INCH Lehenga Length: 40 INCH	Printed with All over mirror work	Print with thread embroidered and all over mirror work	Printed dupatta with all over mirror	2.40	2.5
2412	Multi Color	Maslin Cotton	Maslin Cotton	Maslin Cotton	Choli Chest: 38 INCH Choli Length: 15 INCH Lehenga Wasit: 42 INCH Lehenga Length: 40 INCH	Printed with All over mirror work	Print with thread embroidered and all over mirror work	Embroidered With all over mirror	2.40	2.5
2413	Multi Color	Maslin Cotton	Maslin Cotton	Maslin Cotton	Choli Chest: 38 INCH Choli Length: 15 INCH Lehenga Wasit: 42 INCH Lehenga Length: 40 INCH	Printed with All over mirror work	Print with thread embroidered and all over mirror work	Embroidered With all over mirror	2.40	2.5
2414	White	Maslin Cotton	Rayon	Gajji Silk	Choli Chest: 38 INCH Choli Length: 15 INCH Lehenga Wasit: 42 INCH Lehenga Length: 40 INCH	Printed with All over mirror work	Thread embroidered with all over mirror work	Pigment Foil Printed Dupatta	2.20	2.5
2415	White	Maslin Cotton	Rayon	Rayon	Choli Chest: 38 INCH Choli Length: 15 INCH Lehenga Wasit: 42 INCH Lehenga Length: 40 INCH	Printed with All over mirror work	Thread embroidered with all over mirror work	Lace on border	2.40	2.5
2416	Yellow	Maslin Cotton	Maslin Cotton	Maslin Cotton	Choli Chest: 38 INCH Choli Length: 15 INCH Lehenga Wasit: 42 INCH Lehenga Length: 40 INCH	Printed with All over mirror work	Print with thread embroidered and all over mirror work	Printed dupatta with all over mirror	2.40	2.5

THIS BOOK / CATALOGUE / LOGO / ARE PROTECTED UNDER COPYRIGHT ACT.

AN ILLEGAL/UNAUTHORIZED REPRINT, PUBLISHING, REPRODUCTION, DISTRIBUTION AND MODIFICATION OF ANY IMAGES, PHOTOGRAPHS AND PRODUCTS, TOTALLY OR IN PART, FOR ANY PURPOSE, REASON OR CAUSE IS STRICTLY PROHIBITED AND PUNISHABLE UNDER LAW.