



MOHMANTHAN™

Royal



MAHOTSAV  
GROUP

*Prima*



MOHMANTHAN™

Royal



MAHOTSAV  
GROUP

*Prima*





MOHMANTHAN™  
*Royal*



MAHOTSAV  
GROUP

\*\*\* INTRODUCING \*\*\*

## *Aaina*

OUR LATEST FESTIVE COLLECTION THAT EFFORTLESSLY BLENDS SIMPLICITY WITH ELEGANCE. THIS RANGE FEATURES NINE BEAUTIFULLY CRAFTED SAREES, EACH PAIRED WITH A PRE-STITCHED BLOUSE TO MAKE STYLING EASY AND SEAMLESS. PERFECT FOR ANY SPECIAL EVENT OR CELEBRATION, "AAINA" COMBINES GRACE WITH CONVENIENCE. ENJOY THE CHARM OF THESE SAREES AND THE EASE OF PRE-STITCHED BLOUSES, ENSURING YOU LOOK EFFORTLESSLY STUNNING.



24202  
FABRIC : PAPER SILK CRINKLE  
BLOUSE : RANGKAT EMBROIDERY





24202

FABRIC : PAPER SILK CRINKLE  
BLOUSE : RANGKAT EMBROIDERY













24205

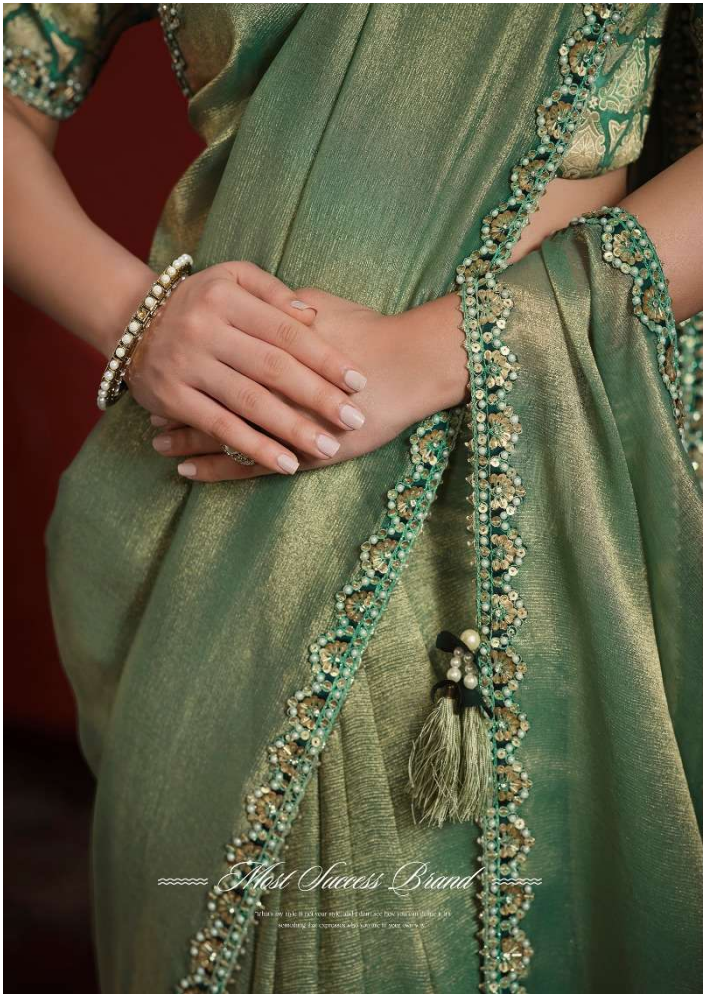
FABRIC : PURE BANARASI JARI PLEAT  
BLOUSE : WEAVE RANGKAT



24206

FABRIC : PURE BANARASI JARI PLEAT  
BLOUSE : WEAVE RANGKAT





*Most Success Brand*

© 2024 Most Success Brand. All rights reserved. For copyright and trademark information, please visit our website.



24206

FABRIC : PURE BANARASI JARI PLEAT  
BLOUSE : WEAVE RANGKAT













24209  
FABRIC : DOLLA SILK CRINKLE  
BLOUSE : WEAVE RANGKAT



24201



24202



24203



24207



24208



24209



24204



24205



24206

*Aaina*  
 MOHMAN THAN™  
 Royal  
 MAHOTSAV  
 GROUP



## MOHMANTHAN- 24200 SERIES "Aaina"

| DESIGN NO | SAREE FABRIC                   | BLOUSE FABRIC  | Work                     | Jacket & Belt | Saree Type | CUSTZ.(SEMISTITCH/UN-STITCH) | BLOUSE SIZE                          | REMARK  |
|-----------|--------------------------------|----------------|--------------------------|---------------|------------|------------------------------|--------------------------------------|---|
| 24201     | Natural Crepe Georgette Silk   | Emb Appli look | Sequence with Handwork   | NA            | Regular    | Stitched Blouse              | up to 38 Inch with margin of 42 inch | The first wash of the garment should always be Dry-Cleaned. |
| 24202     | Crush Paper Silk               | Rangkat Emb    | Sequence with Handwork   | NA            | Regular    | Stitched Blouse              | up to 38 Inch with margin of 42 inch | The first wash of the garment should always be Dry-Cleaned. |
| 24203     | Crush Paper Silk               | Rangkat Emb    | Moti with Handwork       | NA            | Regular    | Stitched Blouse              | up to 38 Inch with margin of 42 inch | The first wash of the garment should always be Dry-Cleaned. |
| 24204     | Two Tone Jacquard Butti Tusser | Weave Rangkat  | Pure Cut work            | NA            | Regular    | Stitched Blouse              | up to 38 Inch with margin of 42 inch | The first wash of the garment should always be Dry-Cleaned. |
| 24205     | Pure Banarasi Jari pleat       | Weave Rangkat  | Stone with Handwork      | NA            | Regular    | Stitched Blouse              | up to 38 Inch with margin of 42 inch | The first wash of the garment should always be Dry-Cleaned. |
| 24206     | Pure Banarasi Jari pleat       | Weave Rangkat  | Sequence with Handwork   | NA            | Regular    | Stitched Blouse              | up to 38 Inch with margin of 42 inch | The first wash of the garment should always be Dry-Cleaned. |
| 24207     | Pure Banarasi Jari Crinkle     | Rangkat Emb    | Sequence with Handwork   | NA            | Regular    | Stitched Blouse              | up to 38 Inch with margin of 42 inch | The first wash of the garment should always be Dry-Cleaned. |
| 24208     | Paper Silk Pleat               | Rangkat Emb    | Moti with Handwork       | NA            | Regular    | Stitched Blouse              | up to 38 Inch with margin of 42 inch | The first wash of the garment should always be Dry-Cleaned. |
| 24209     | Dolla Silk Crinkle/Upada Silk  | Weave Rangkat  | Pure hand with moti work | NA            | Regular    | Stitched Blouse              | up to 38 Inch with margin of 42 inch | The first wash of the garment should always be Dry-Cleaned. |