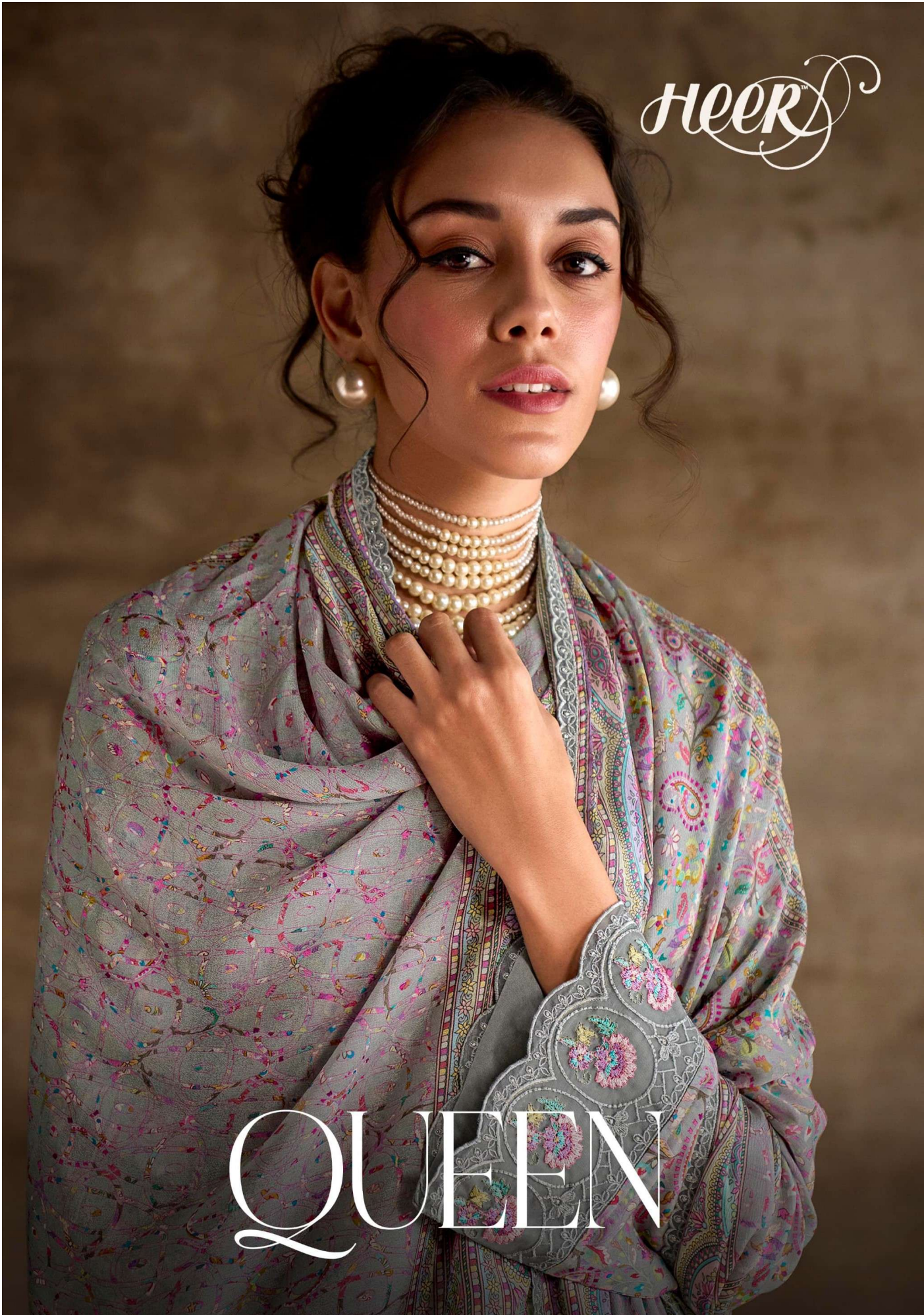


Heer™

QUEEN



Heer

URBAN EDGE

The pulsating energy of city life captured in dynamic styles that speak the language of the streets.

9436



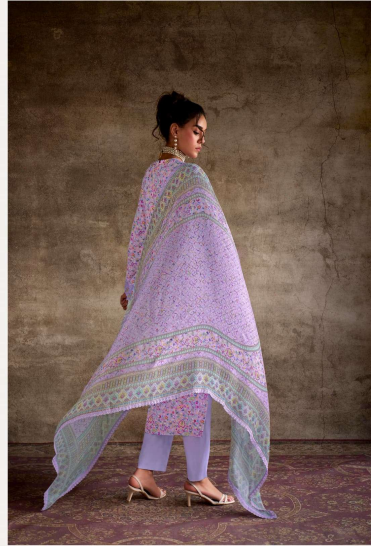
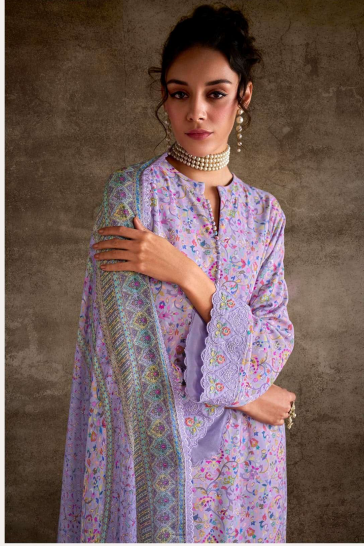
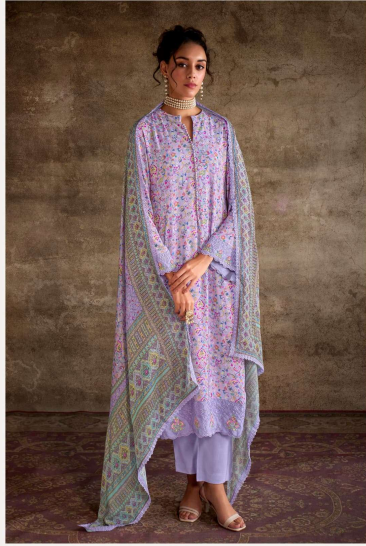
## URBAN EDGE

The pulsating energy of city life captured in dynamic styles that speak the language of the streets.

9436



HEER



#### CHIC SIMPLICITY

Finding profound beauty in simplicity, where less speaks more, and minimalism reigns with sophistication.

9435

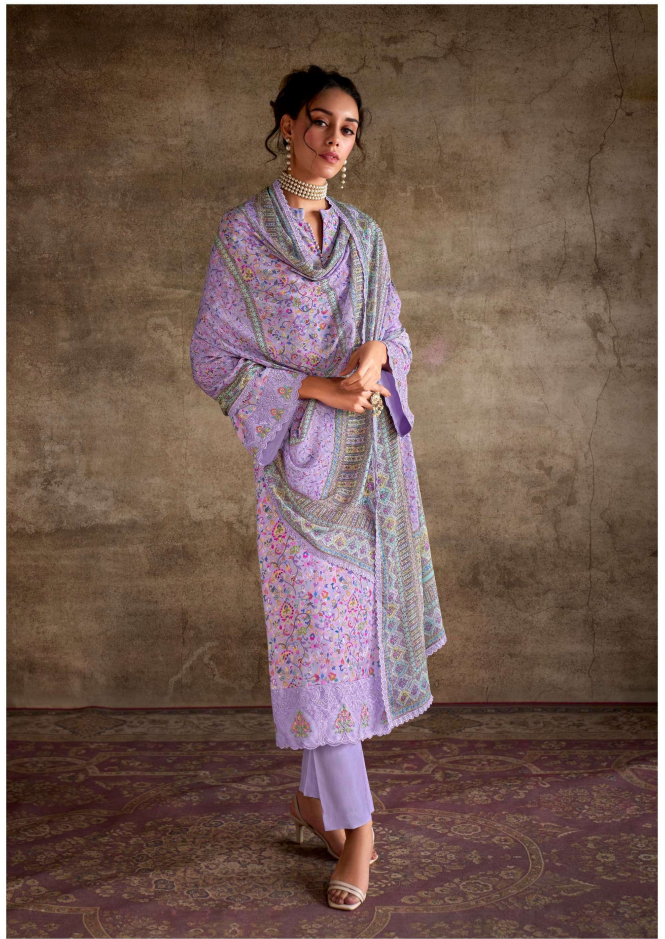


HEER

CHIC SIMPLICITY

Finding profound beauty in simplicity, where less speaks more, and minimalism reigns with sophistication.

9435





HEER

## VINTAGE CHARM

A nod to the past, where every thread weaves stories of bygone eras into the fabric of the present.

9434





### VINTAGE CHARM

A nod to the past, where every thread weaves stories of bygone eras into the fabric of the present.

9434

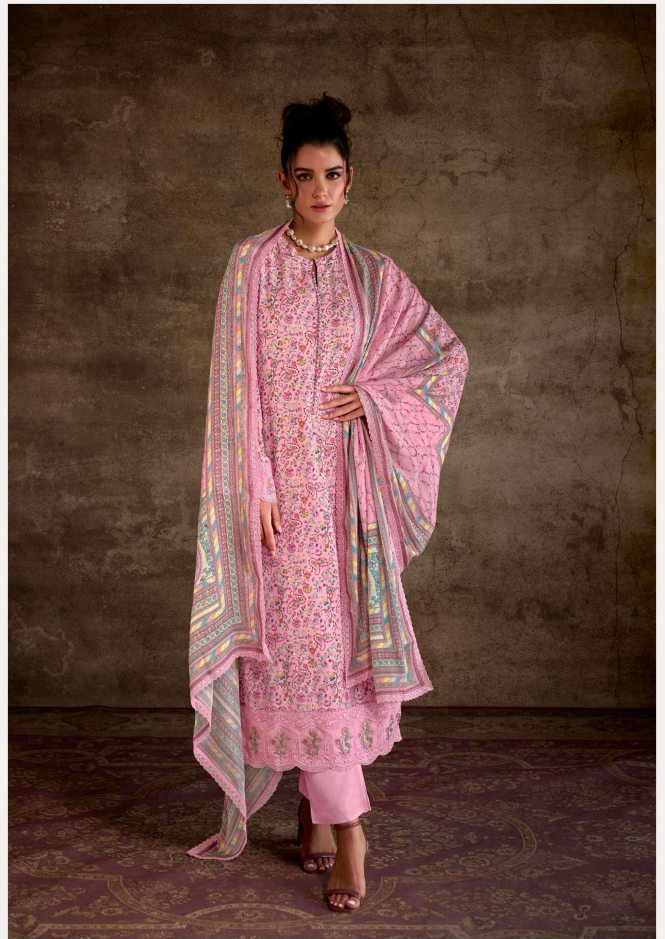
*Heer*

HEER

BOLD EXPRESSION

Where fashion meets fearless creativity, a canvas for showcasing the vibrant colors of one's soul.

9433







*Heer*

**BOLD EXPRESSION**

Where fashion meets fearless creativity, a canvas for showcasing the vibrant colors of one's soul.

9433





**METALLIC GLOW**

Shimmering fabrics that catch the light, adding a touch of glamour to the everyday.

**9432**

HEER



9432

METALLIC GLOW

Shimmering fabrics that catch the light, adding a touch of glamour to the everyday.





HEER

## METALLIC GLOW

Shimmering fabrics that catch the light, adding a touch of glamour to the everyday.

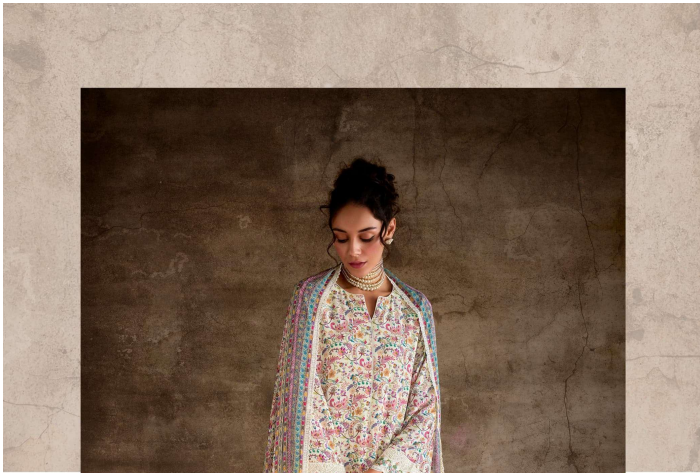
HEER

TIMELESS ELEGANCE

Celebrating the quiet beauty that defies eras, embodying grace that whispers tales of timeless allure.

9431





TIMELESS ELEGANCE

Celebrating the quiet beauty that defies eras, embodying grace that whispers tales of timeless allure.

9431



HEER

QUEEN



9431



9432



9433



9434



9435



9436

# QUEEN

## TOP

PURE PASHMINA WITH DIGITAL PRINT AND SCALLOPED RESHAM AND KASHMIRI EMBROIDERY ON HEMLINE AND SLEEVES

## DUPATTA

PURE CHINNON WITH DIGITAL PRINT AND SCALLOPED RESHAM EMBROIDERY BORDER

## BOTTOM

PURE PASHMINA STAPLE

*Heer*  
BY KIMORA





Heer™

QUEEN

