



KRESHVA

अलकनंदा

ALAKNANDA

K-064





KRESHVA

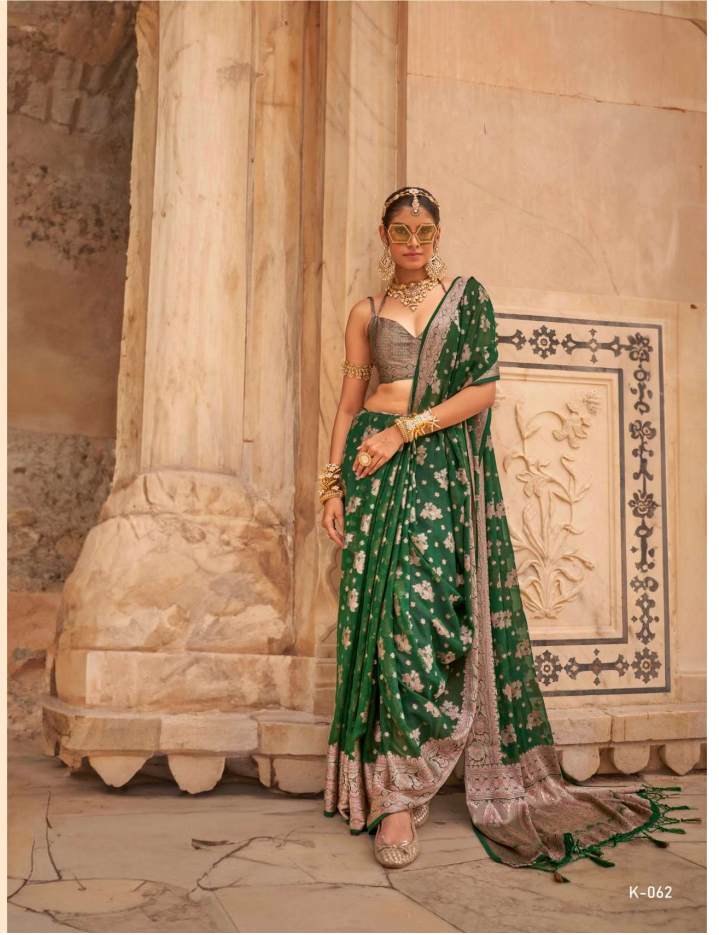


A sari sometimes also saree or sadi is a women's garment from the Indian subcontinent it consists of an unstitched stretch of woven fabric arranged over the body as a robe, with one end attached to the waist, while the other end rests over one shoulder as a stole, sometimes bearing a part of the midri

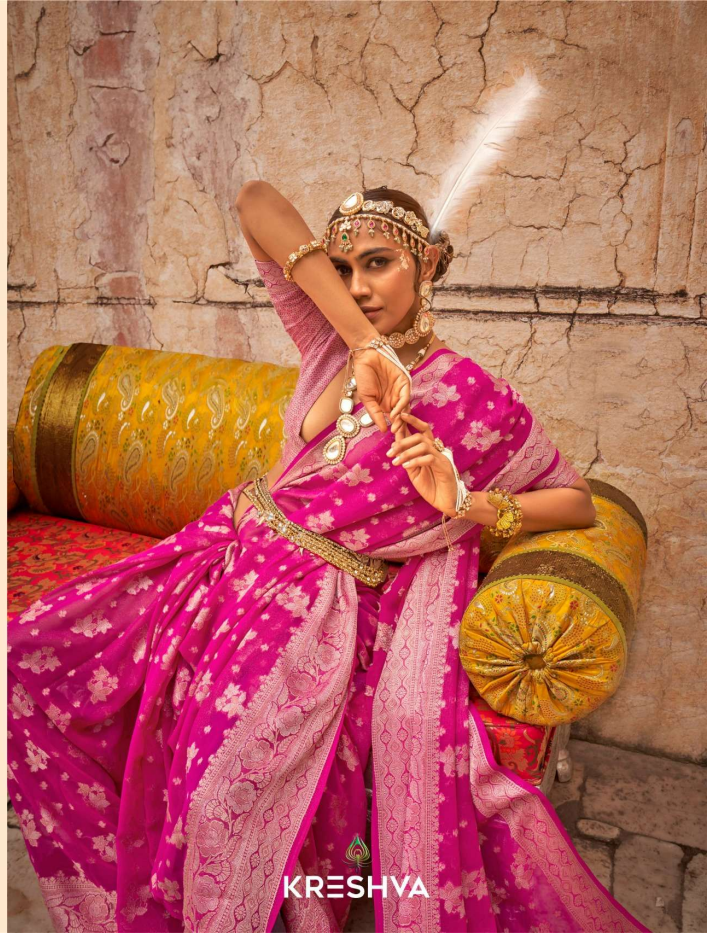
अलकनंदा
ALAKNANDA



KRESHVA



K-062





K-063

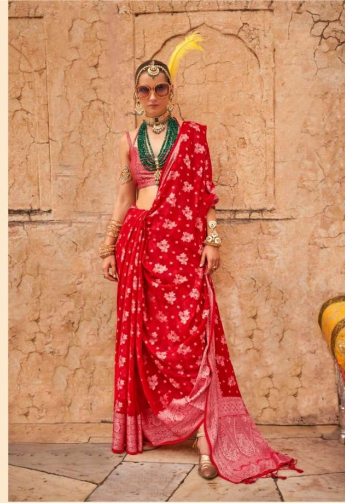
KRESHVA



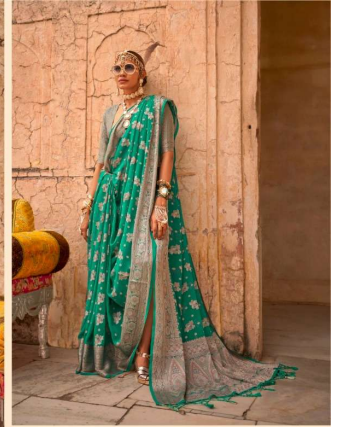
K-060



K-061



K-063



K-064



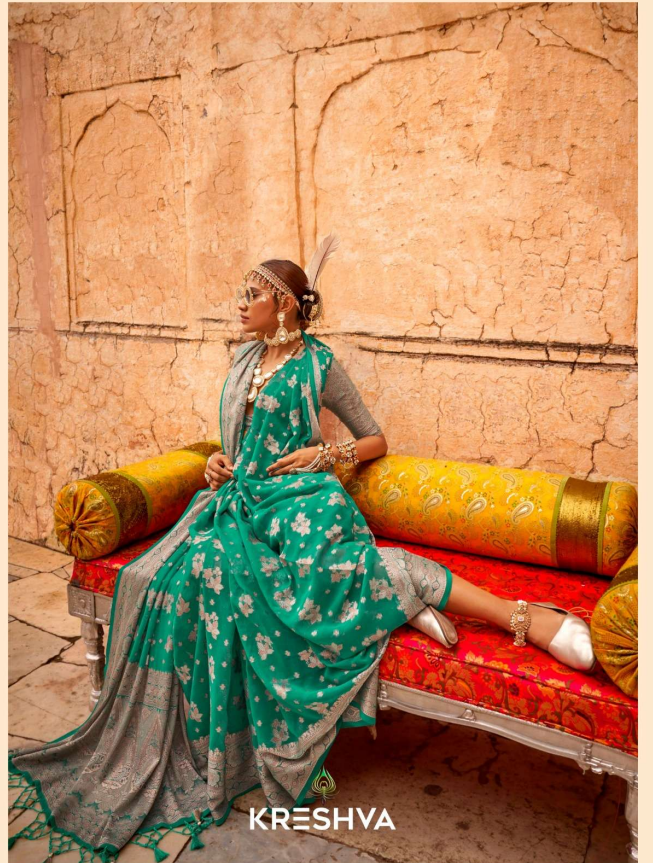
K-062

**KRESHVA**

अलकनंदा
ALAKNANDA



K-065





K-065

KRESHVA



KRESHVA

A sari sometimes also saree or sadi is a women's garment from the Indian subcontinent it consists of an unstitched stretch of woven fabric arranged over the body as a robe, with one end attached to the waist, while the other end rests over one shoulder as a stole, sometimes bearing a part of the midri



K-060





KRESHVA

अलकनंदा

ALAKNANDA

K-060





KRESHVA

अलकनंदा

ALAKNANDA

K-062





KRESHVA

अलकनंदा

ALAKNANDA

K-063



KRESHVA

अलकनंदा

ALAKNANDA

K-061



KRESHVA

अलकनंदा

ALAKNANDA

K-065



KRESHVA

अलकनंदा

ALAKNANDA

K-064

