



**FABRICS DETAILS**

**TOP:-** Heavy Vichatra Viscose  
**BOTTOM:-** Heavy Dull Santoon  
**DUPATTA:-** Heavy Vichatra Viscose



**CARE INSTRUCTIONS**

DRY CLEAN RECOMMENDED  
DO NOT USE ANY TYPE OF BLEACH OR STAIN REMOVING CHEMICALS  
WASH & SOAK COLORED & WHITE FABRICS SEPARATELY  
DO NOT OVER EXPOSE DAMP FABRIC TO STRONG SUNLIGHT  
IRON AT MODERATE TEMPERATURE



AL QASR

MA-97





AL QASR  
MA-97





AL QASR

MA-97





AL QASR

MA-97





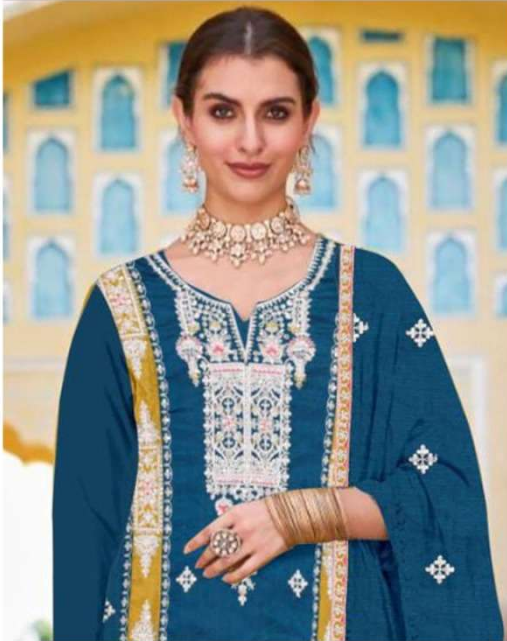
**READYMADE**

**MA-97**

**WASHING INSTRUCTIONS**

DO NOT USE HOT TYPE OF BLEACH OR STAIN REMOVING CHEMICALS  
BEFORE CUTTING / EMBROIDERED FABRIC SHOULD BE SOAKED IN WATER  
( ALL COMPONENTS SEPARATELY ) FOR 15 MINUTES  
DO NOT KEEP HOT FABRIC IN DIRECT SUN OR EXPOSE TO AUGUST COPY MARKS  
WASH COLORABLE AND WHITE FABRIC SEPARATELY  
IRON CLOTHES AT MODERATE TEMPERATURE ( DO NOT DRY FABRIC IN DIRECT SUNLIGHT  
( EXTRA LINES, HANGINGS AND ACCESSORIES ARE NOT PROVIDED )





**READYMADE**

**MA-97**

**WASHING INSTRUCTIONS**

DO NOT USE ANY TYPE OF BLEACH OR STAIN REMOVING CHEMICALS BEFORE CUTTING. STITCHED FABRIC SHOULD BE SOAKED IN WATER.  
ALL COMPONENTS SEPARATELY. (FOR 35 DEGREE)  
DO NOT KEEP WET FABRIC IN DIRECT SUN OR WINDY TO AVOID COPE MARKS.  
WASH COLOURED AND WHITE FABRIC SEPARATELY.  
IRON CLOTHES AT MODERATE TEMPERATURE. DO NOT DRY FABRIC IN DIRECT SUNLIGHT.  
(EXTRA LINES, HANDS AND ACCESSORIES ARE NOT PROVIDED.)

