



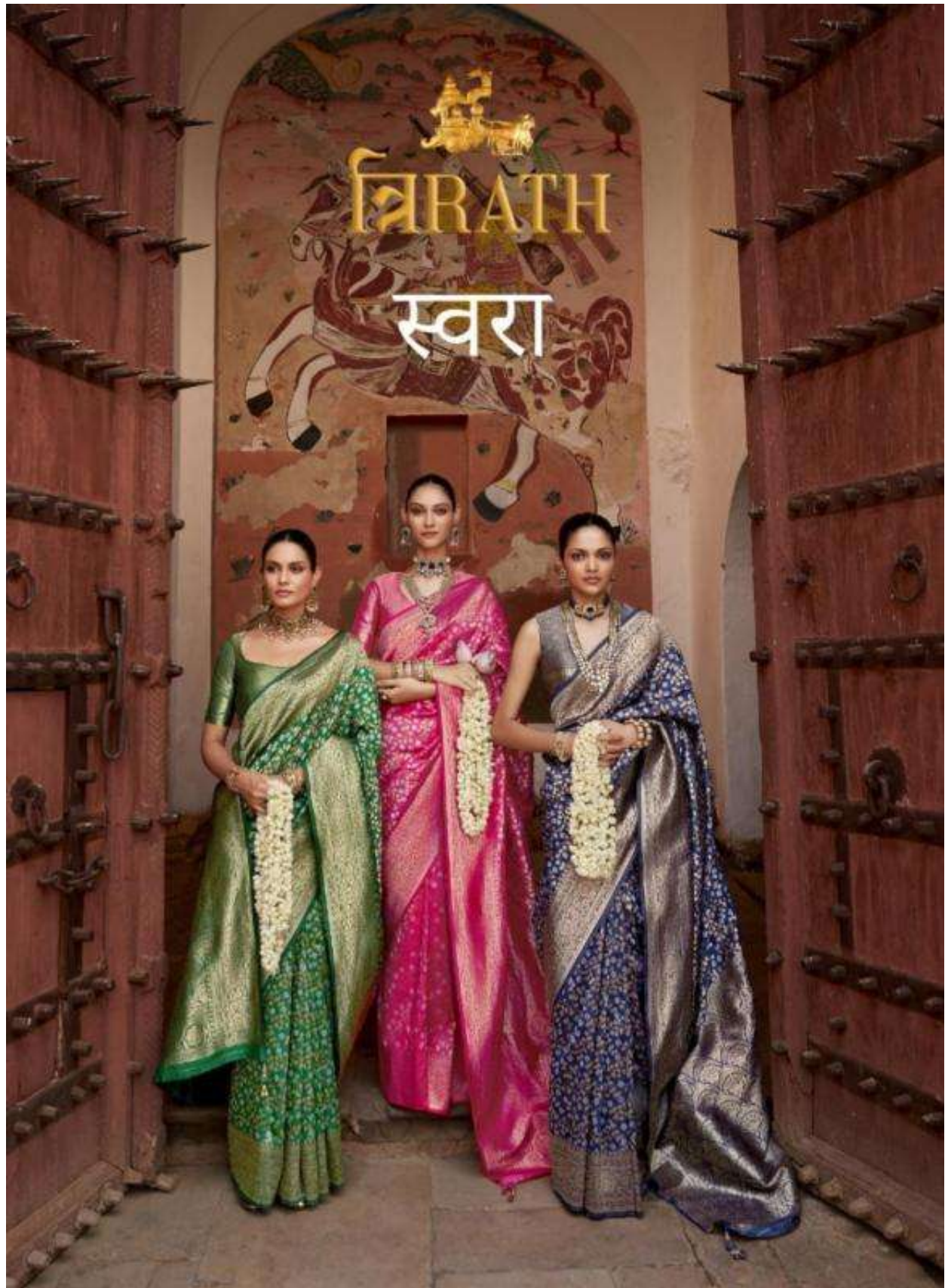
A woman is standing in a traditional Indian temple-like setting. She is wearing a light-colored saree with a subtle floral pattern and a matching blouse. She is adorned with a large, ornate necklace and a matching bracelet. She is holding a small bouquet of flowers. The background features stone pillars and a textured wall. The lighting is warm and dramatic.

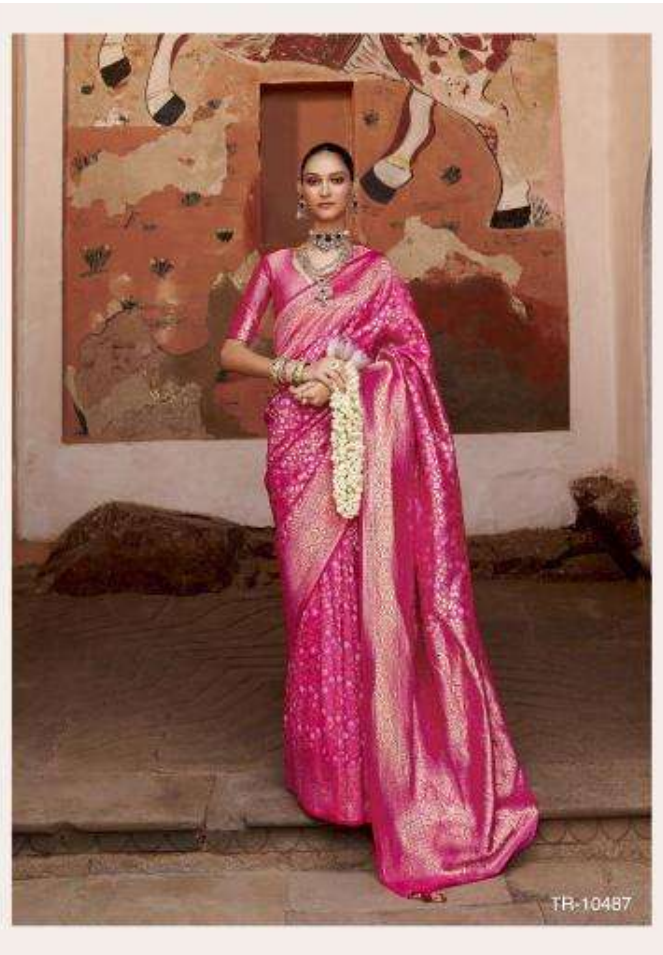
त्रिराथ

स्वरा

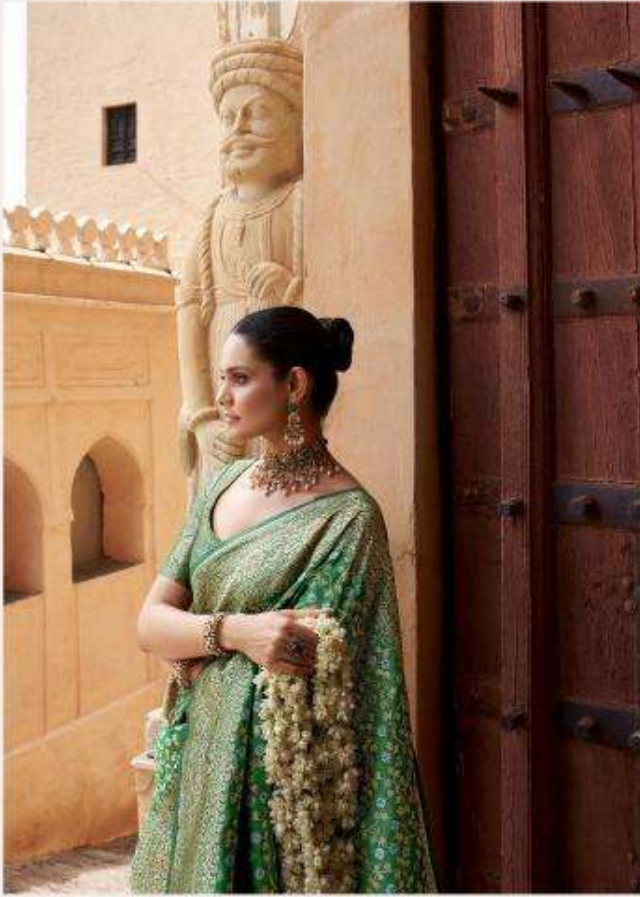
TR-10493

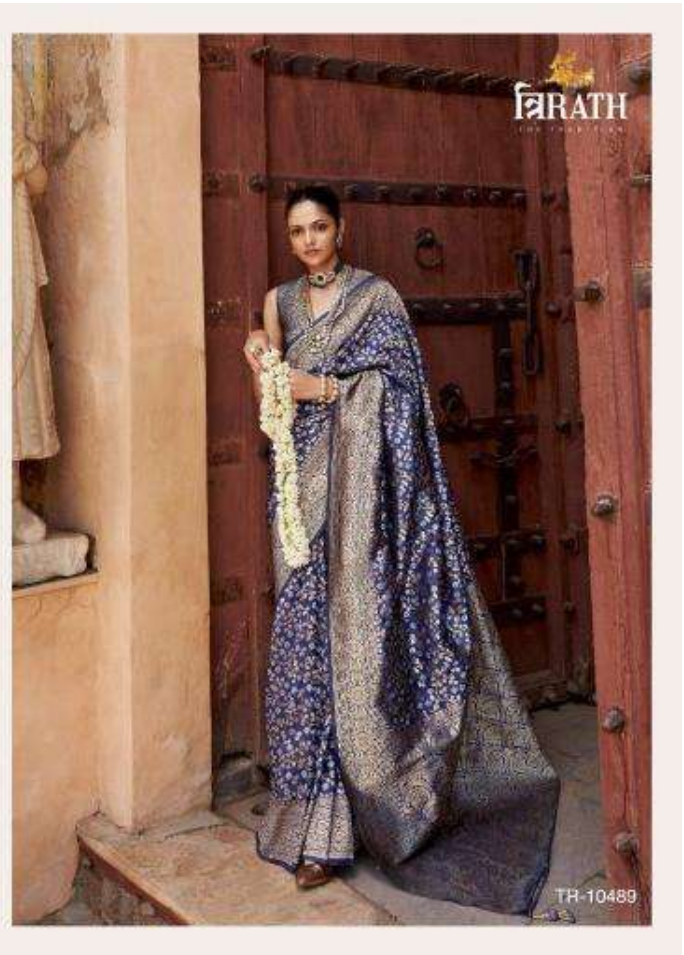




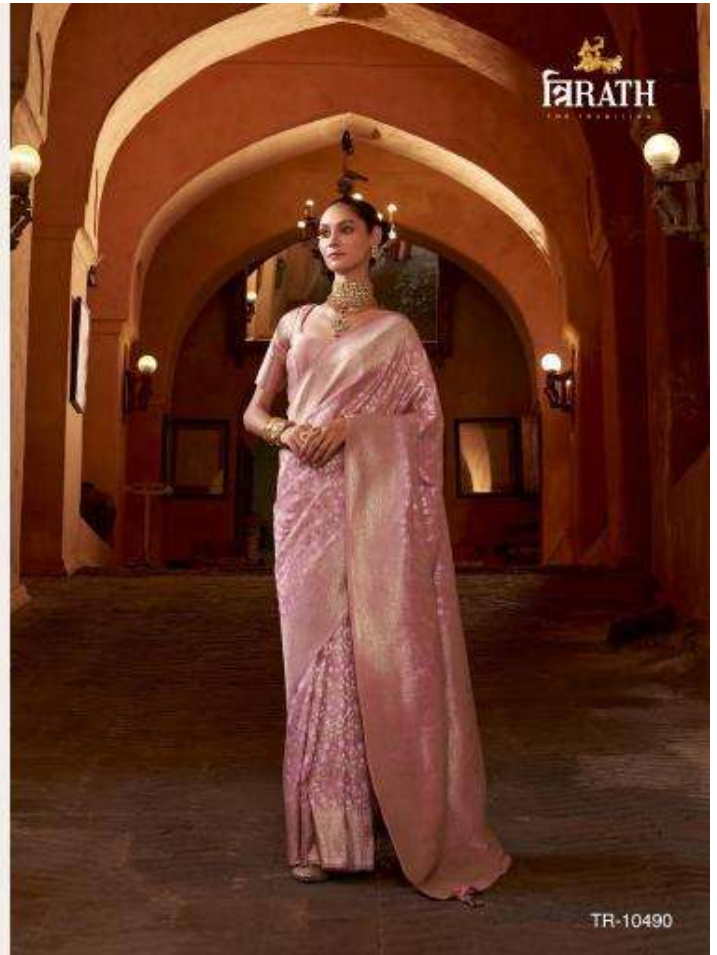
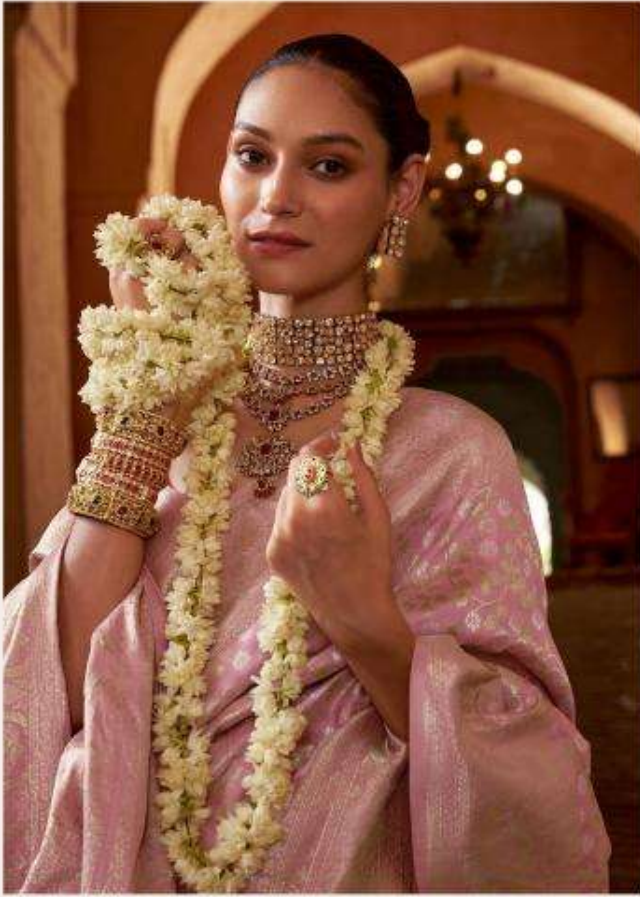


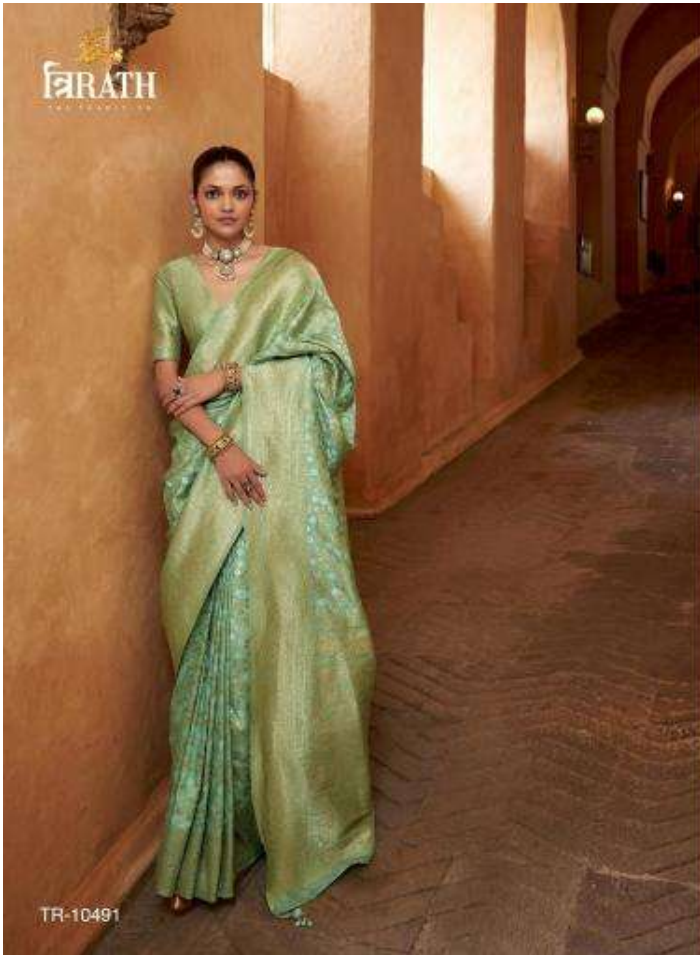




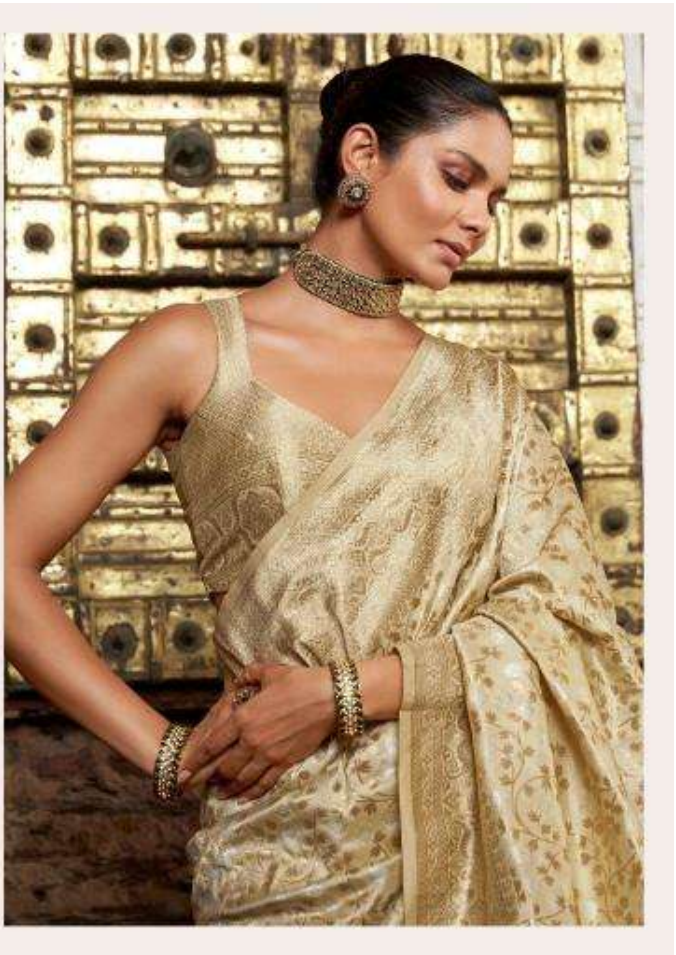
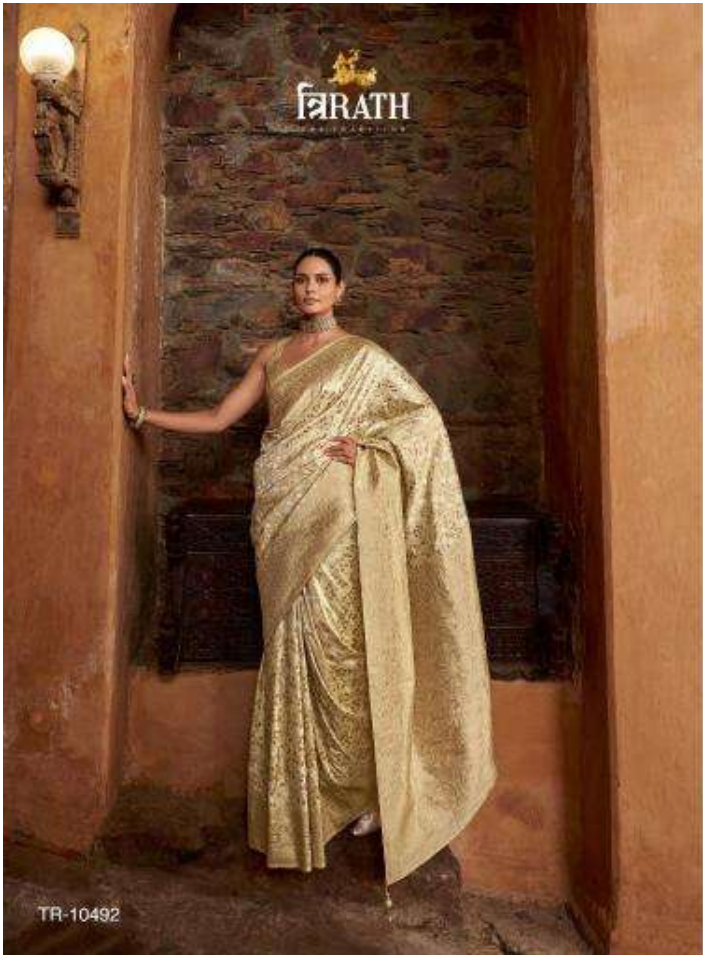




















TR-10487



TR-10488



TR-10489



TR-10490



TR-10491



TR-10492



TR-10493



TR-10494