



AL QASR

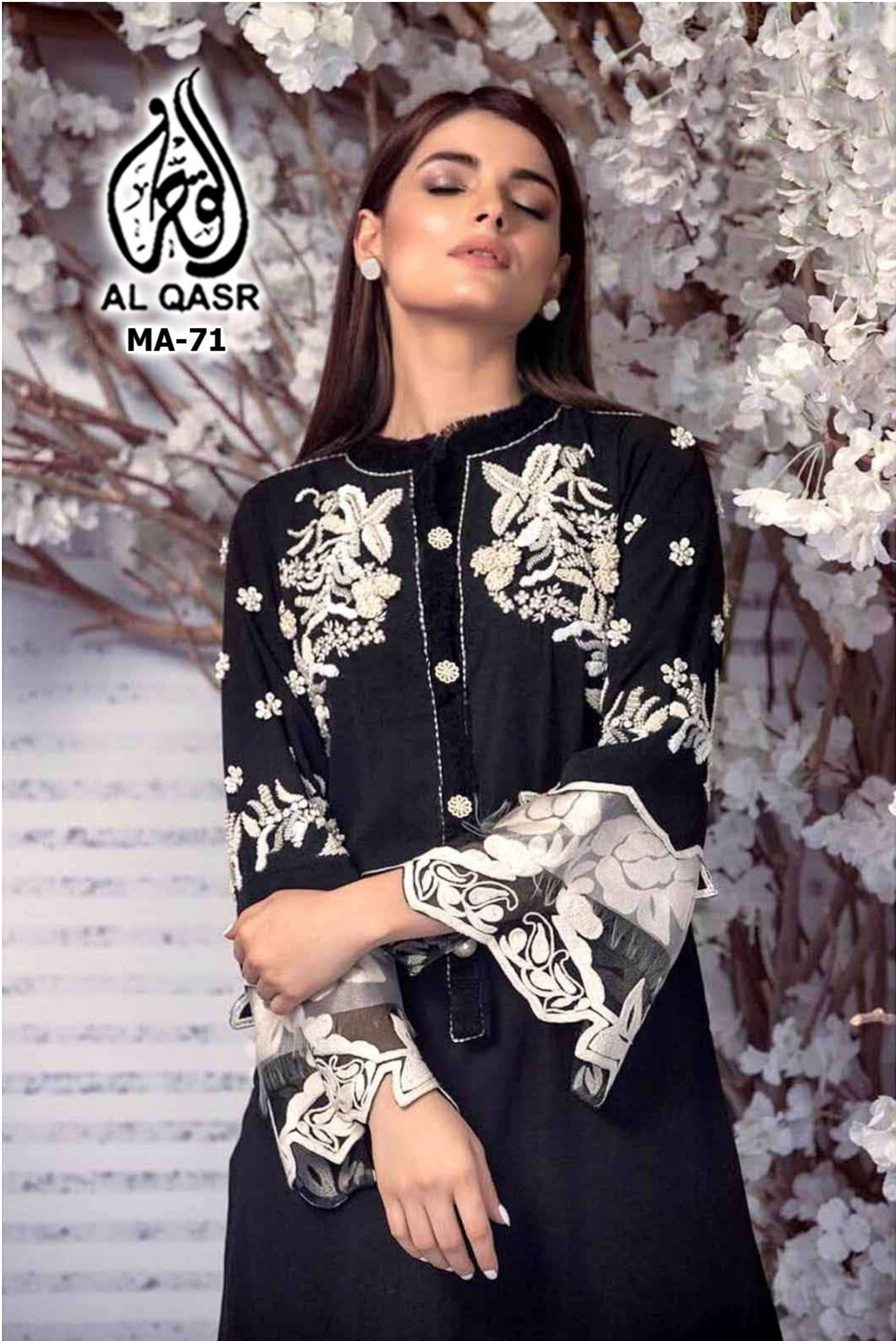
MA-71





AL QASR

MA-71





AL QASR

MA-71





AL QASR

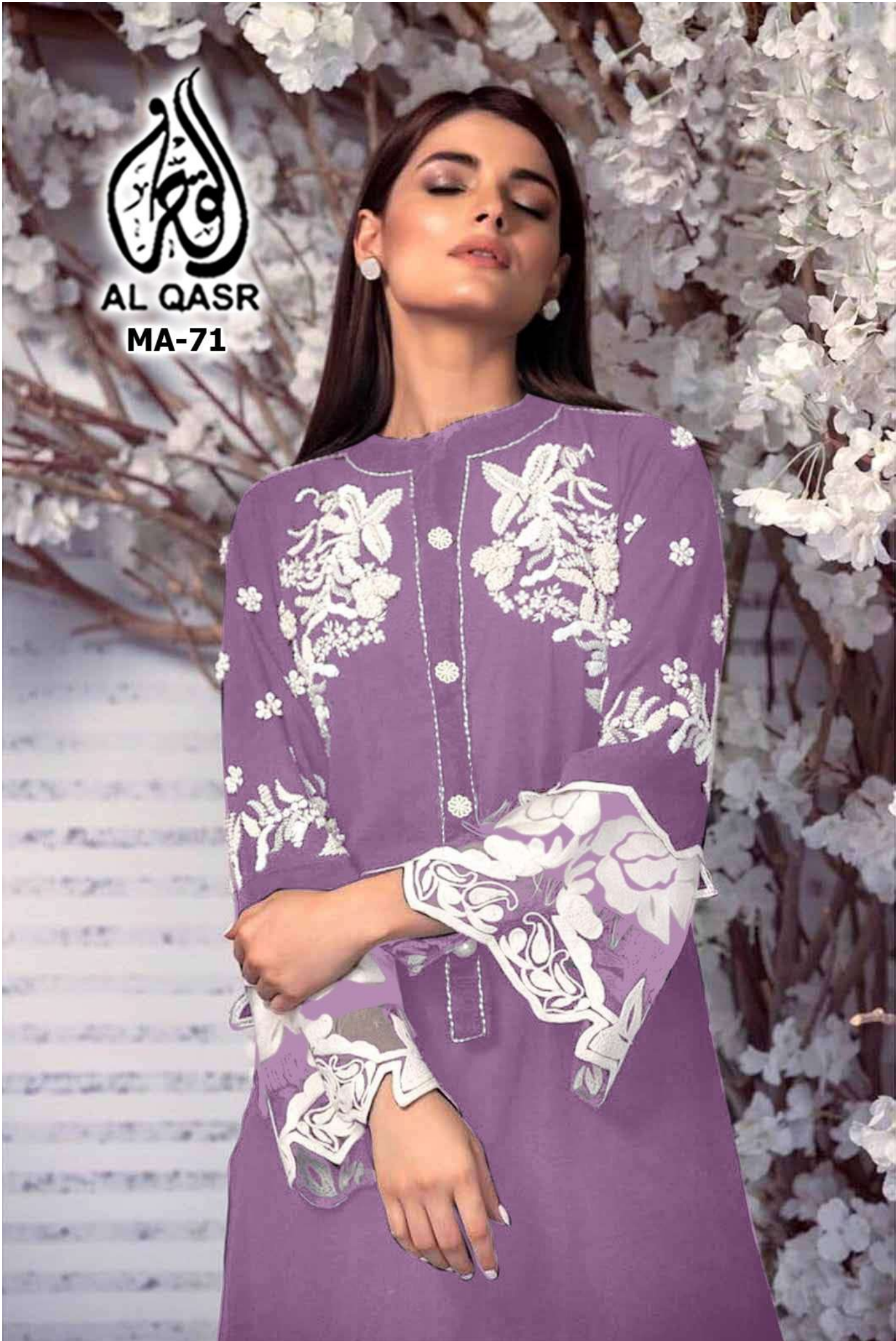
MA-71





**AL QASR**

**MA-71**





AL QASR

MA-71





AL QASR

MA-71





AL QASR

MA-71

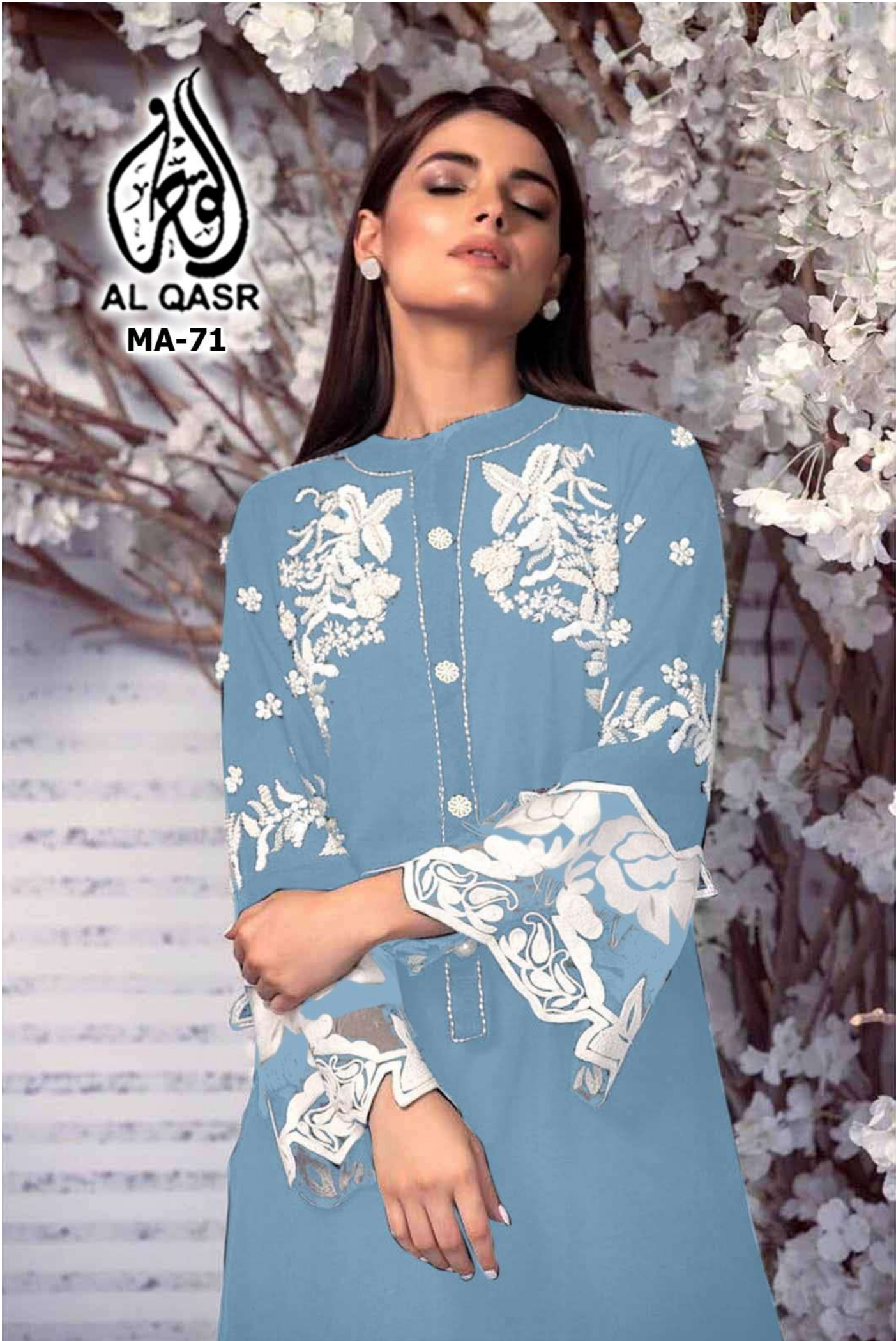






AL QASR

MA-71





# READYMADE

MA-71

WASHING INSTRUCTIONS

DO NOT USE ANY TYPE OF BLEACH OR STAIN REMOVING CHEMICALS BEFORE CUTTING. STITCHED FABRIC SHOULD BE SOAKED IN WATER.  
( ALL COMPONENTS SEPARATELY ) ( DRY IN SHADY )  
DO NOT KEEP WET FABRIC IN DIRECT RAY OF SUN OR IN AUTO CLIMATE MACHINES.  
WASH COLOURS AND CARE IN SEPARATE SEPARATELY.  
IRON CLOTHES AT APPROPRIATE TEMPERATURE. ( DO NOT DRY FABRIC IN DIRECT SUNLIGHT )  
( EXTRA LINES, HANDS AND ACCESSORIES ARE NOT PROVIDED )



# READYMADE

MA-71

**WASHING INSTRUCTIONS**

DO NOT USE ANY TYPE OF BLEACH OR STAIN REMOVING CHEMICALS BEFORE CUTTING. EMBROIDERED FABRIC SHOULD BE SOAKED IN WATER.  
ALL COMPONENTS SEPARATELY. (DO NOT WASH)  
DO NOT KEEP WET FABRIC IN DIRECT SUN OR WINDY TO AVOID COLOR WASHING.  
WASH COLORABLE AND WHITE FABRIC SEPARATELY.  
IRON CLOTHES AT APPROPRIATE TEMPERATURE. (DO NOT DRY FABRIC IN DIRECT SUNLIGHT)  
(EXTRA LINES, HANDS AND ACCESSORIES ARE NOT PROVIDED.)



# READYMADE

MA-71

**WASHING INSTRUCTIONS**

DO NOT USE ANY TYPE OF BLEACH OR STAIN REMOVING CHEMICALS BEFORE CUTTING. STITCHED FABRIC SHOULD BE SOAKED IN WATER.  
ALL COMPONENTS SEPARATELY. (DO NOT BLEND).  
DO NOT KEEP WET FABRIC IN DIRECT RAY OF SUN OR IN AUSTIC COPY MACHINES.  
WASH COLORABLE AND WHITE FABRIC SEPARATELY.  
IRON CLOTHES AT MODERATE TEMPERATURE. (DO NOT DRY FABRIC IN DIRECT SUNLIGHT.  
(EXTRA LINES, HANGINGS AND ACCESSORIES ARE NOT PROVIDED.)



# READYMADE

MA-71

**WASHING INSTRUCTIONS**

DO NOT USE ANY TYPE OF BLEACH OR STAIN REMOVING CHEMICALS  
BEFORE CUTTING / EMBROIDERED FABRIC SHOULD BE SOAKED IN WATER  
( ALL COMPONENTS SEPARATELY ) / DRY IN SHADY  
DO NOT KEEP WET FABRIC IN DIRECT RAY OF SUN OR IN AUTO CLIMATE WASHES  
WASH COLOURS AND WASH IN SEPARATE WASHING  
IRON CLOTHES AT MODERATE TEMPERATURE ( DO NOT DRY FABRIC IN DIRECT SUNLIGHT  
( EXTRA LACES, HANGINGS AND ACCESSORIES ARE NOT PROVIDED )



**AL QASR**  
**MA-71**





**AL QASR**  
**MA-71**





**AL QASR**  
**MA-71**







**FABRICS DETAILS**

TOP:-HEAVY GEORGATTE WITH EMBROIDERY  
AND KHATLI WORK  
BOTTOM:-HEAVY GEORGATTE  
DUPATTA:-HEAVY NAZNIN WITH PRINT



**CARE INSTRUCTIONS**

DRY CLEAN RECOMMENDED  
DO NOT USE ANY TYPE OF BLEACH OR STAIN REMOVING CHEMICALS  
WASH & SOAK COLORED & WHITE FABRICS SEPARATELY  
DO NOT OVER EXPOSE DAMP FABRIC TO STRONG SUNLIGHT  
IRON AT MODERATE TEMPERATURE



**AL QASR**  
**MA-71**





**AL QASR**  
**MA-71**





AL QASR

MA-71

