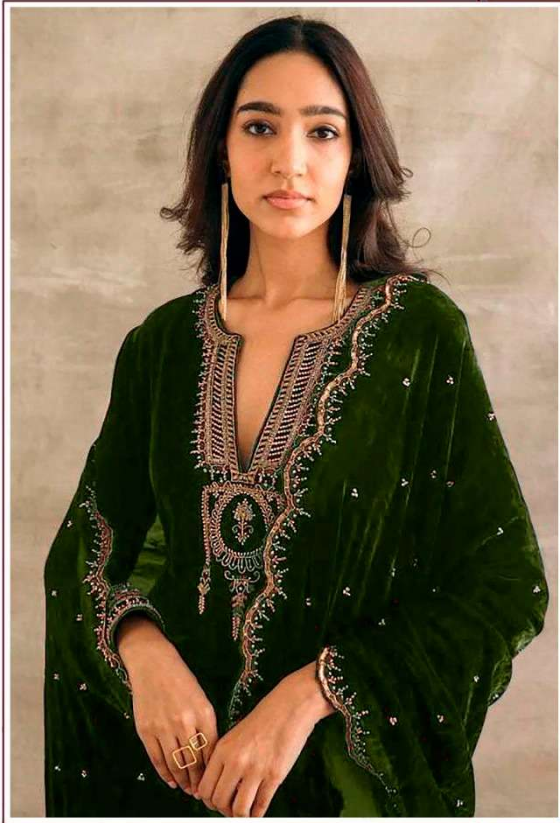




FLORENT®

D.no-1020-D



TOP - 9000 VELVET WITH HEAVY EMBROIDERY

BOTTOM - 9000 VELVET WITH HEAVY EMBROIDERY

DUPATTA - 9000 VELVET WITH HEAVY EMBROIDERY





FLORENT®

D.no-1020-A



TOP - 9000 VELVET WITH HEAVY EMBROIDERY

BOTTOM - 9000 VELVET WITH HEAVY EMBROIDERY

DUPATTA - 9000 VELVET WITH HEAVY EMBROIDERY



FLORENT®

D.no-1020-B



TOP - 9000 VELVET WITH HEAVY EMBROIDERY

BOTTOM - 9000 VELVET WITH HEAVY EMBROIDERY

DUPATTA - 9000 VELVET WITH HEAVY EMBROIDERY





FLORENT®

D.no-1020-C



TOP - 9000 VELVET WITH HEAVY EMBROIDERY

BOTTOM - 9000 VELVET WITH HEAVY EMBROIDERY

DUPATTA - 9000 VELVET WITH HEAVY EMBROIDERY





FLORENT®

D.no-1020-D



TOP - 9000 VELVET WITH HEAVY EMBROIDERY

BOTTOM - 9000 VELVET WITH HEAVY EMBROIDERY

DUPATTA - 9000 VELVET WITH HEAVY EMBROIDERY



FLORENT®



D.NO.1020-A



D.NO.1020-B



D.NO.1020-C



D.NO.1020-D



FLORENT®
D.no-1020-C

TOP - 8000 VELVET WITH HEAVY EMBROIDERY
BOTTOM - 8000 VELVET WITH HEAVY EMBROIDERY
DUPATTA - 8000 VELVET WITH HEAVY EMBROIDERY





FLORENT®
D.no-1020-A



TOP - 8000 VELVET WITH HEAVY EMBROIDERY
BOTTOM - 8000 VELVET WITH HEAVY EMBROIDERY
DUPATTA - 8000 VELVET WITH HEAVY EMBROIDERY



FLORENT

D.no-1029-D



TOP - 800 VELVET WITH HEAVY EMBROIDERY
BOTTOM - 800 VELVET WITH HEAVY EMBROIDERY
DUPATTA - 800 VELVET WITH HEAVY EMBROIDERY