



24202 C

FABRIC : PAPER SILK CRINKLE

BLOUSE : RANGKAT EMBROIDERY *Ready to wear*

DESIGN NO	SAREE FABRIC	BLOUSE FABRIC	Work	Saree Type	CUSTZ.(SEMISTITCH/UN-STITCH)	BLOUSE SIZE
24201	Natural Crepe Georgette Silk	Emb Applic look	Sequence with Handwork	Regular	Stitched Blouse	up to 38 Inch with margin of 42 inch
24202	Crush Paper Silk	Rangkat Emb	Sequence with Handwork	Regular	Stitched Blouse	up to 38 Inch with margin of 42 inch
24202-B	Crush Paper Silk	Rangkat Emb	Sequence with Handwork	Regular	Stitched Blouse	up to 38 Inch with margin of 42 inch
24202-C	Crush Paper Silk	Rangkat Emb	Sequence with Handwork	Regular	Stitched Blouse	up to 38 Inch with margin of 42 inch
24204	Two Tone Jacquard Butti Tusser	Weave Rangkat	Pure Cut work	Regular	Stitched Blouse	up to 38 Inch with margin of 42 inch
24205	Pure Banarasi Jari pleat	Weave Rangkat	Stone with Handwork	Regular	Stitched Blouse	up to 38 Inch with margin of 42 inch
24207	Pure Banarasi Jari Crinkle	Rangkat Emb	Sequence with Handwork	Regular	Stitched Blouse	up to 38 Inch with margin of 42 inch
24208	Paper Silk Pleat	Rangkat Emb	Moti with Handwork	Regular	Stitched Blouse	up to 38 Inch with margin of 42 inch
24209	Dolla Silk Crinkle/Upada Silk	Weave Rangkat	Pure hand with moti work	Regular	Stitched Blouse	up to 38 Inch with margin of 42 inch

Fresh Beginning

"Don't be into trends. Don't make fashions own you, but you decide what you are, what you want to express by the way you dress and the way to live."



Celebrated New
beginning with the
refreshing colours that symbolise a
fresh beginning.



24209

FABRIC : DOLLA SILK CRINKLE
BLOUSE : WEAVE RANGKAT *Ready to wear*







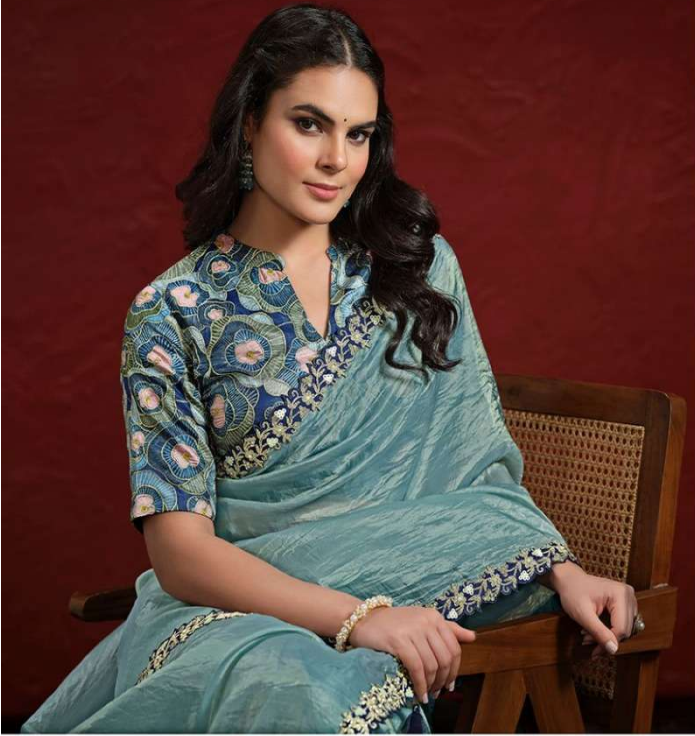
*** INTRODUCING ***

Aaina

FESTIVE WEAR COLLECTION: CELEBRATE WITH OUR BEAUTIFUL AND
EASY-TO-STYLE PIECES THAT SHINE AT ANY OCCASION




~~~~~ *Attractive Always* ~~~~~



"What's my style is not your style, and I don't see how you can define it. It's something that expresses who you are in your own way."



**24208**

FABRIC : PAPER SILK PLEAT  
BLOUSE : RANGKAT EMBROIDERY *Ready to wear*





24202B

FABRIC : PAPER SILK CRINKLE

BLOUSE : RANGKAT EMBROIDERY *Ready to wear*

*Every design*  
is carefully Crafted  
With love and care.



24204

FABRIC : TWO TONE JACQUARD BUTTI TUSSEER  
BLOUSE : WEAVE RANGKAT *Ready to wear*



*A collection*  
In which each saree  
mirrors your unique style.





24202 C

FABRIC : PAPER SILK CRINKLE

BLOUSE : RANGKAT EMBROIDERY *Ready to wear*



24202

FABRIC : PAPER SILK CRINKLE  
BLOUSE : RANGKAT EMBROIDERY *Ready to wear*

WE HAVE USED *Festive Colours*  
which signifies joy  
Celebration, and prosperity.



24202

FABRIC : PAPER SILK CRINKLE

BLOUSE : RANGKAT EMBROIDERY *Ready to wear*



MORDEN STYLE

"I truly believe that with the right mindset one can rule the world!"



24201

FABRIC : NATURAL CREPE GEORGETTE SILK

BLOUSE : EMBROIDERY APPLIC LOOK *Ready to wear*