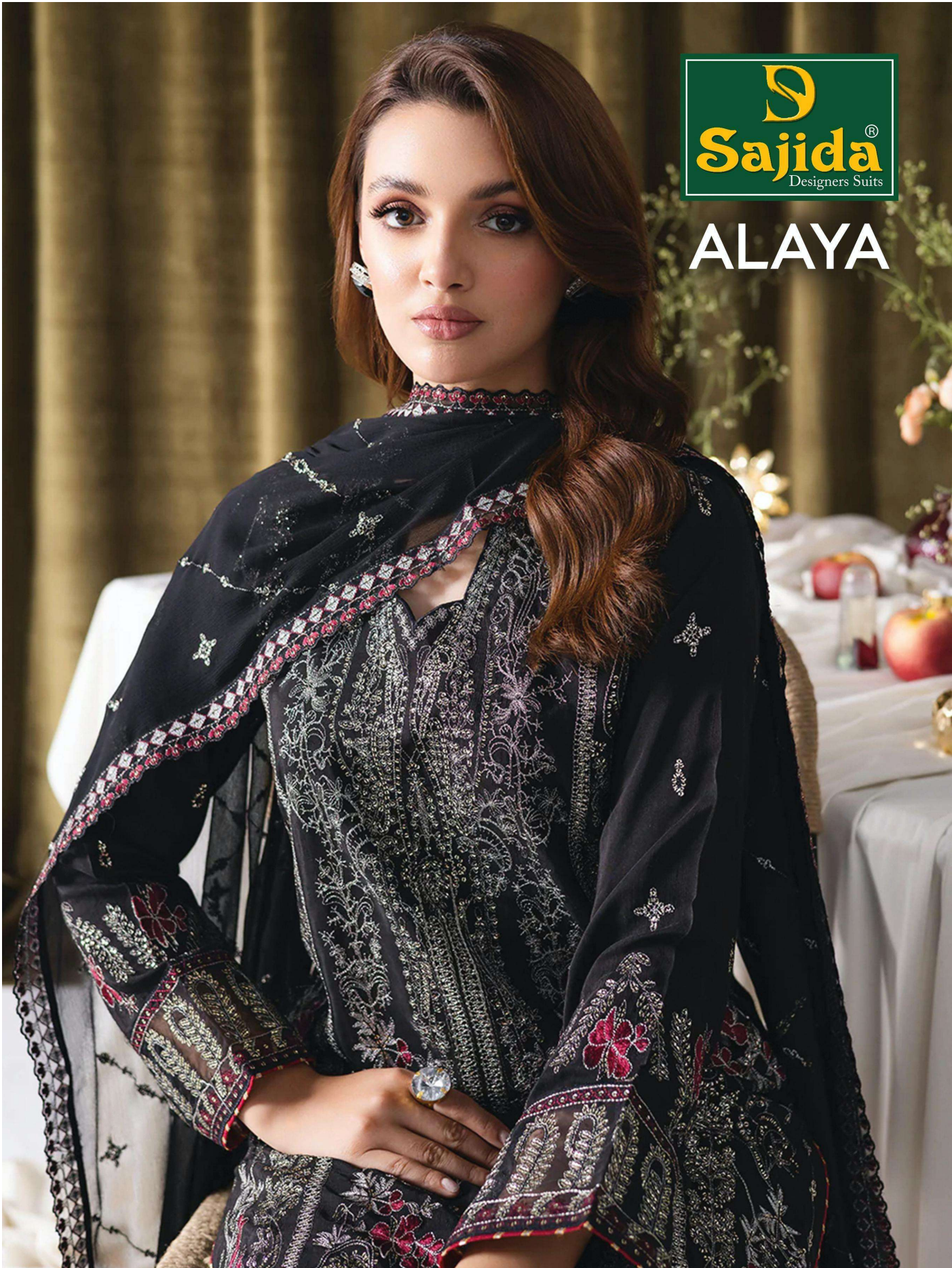


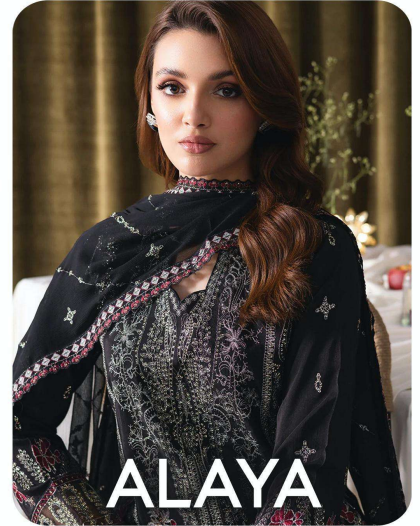


ALAYA





D.No: 1010



TOP Heavy Fox Georgette embroidery with Khatli work (cut 2.50)

BOTTOM-INNER Dull Santoon (cut 4.25)

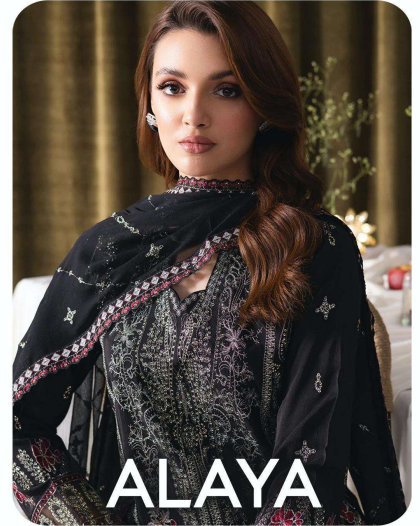
DUPATTA Heavy Fox Georgette embroidery work (cut 2.30)

CARE INSTRUCTIONS

- ☉ Dry clean only
- ⚠ Do not use any bleach or stain removing chemical
- ☐ Iron the fabric at moderate temperature
- ☒ Do not dry fabric in direct sunlight



D.No: 1010



TOP Heavy Fox Georgette embroidery with Khatli work (cut 2.50)

BOTTOM-INNER Dull Santoon (cut 4.25)

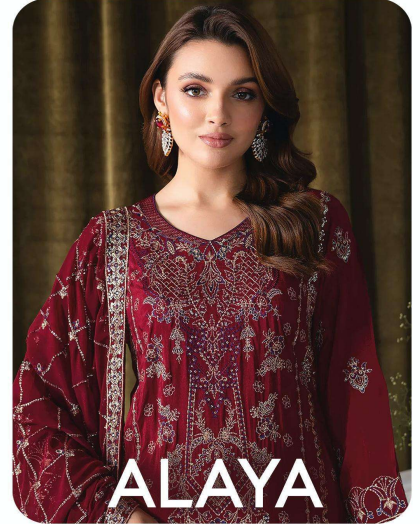
DUPATTA Heavy Fox Georgette embroidery work (cut 2.30)

CARE INSTRUCTIONS

- ☉ Dry clean only
- ⚠ Do not use any bleach or stain removing chemical
- ☐ Iron the fabric at moderate temperature
- ☒ Do not dry fabric in direct sunlight



D.No: 1008



ALAYA

TOP Heavy Fox Georgette embroidery with Khatli work (cut 2.50)

BOTTOM-INNER Dull Santoon (cut 4.25)

DUPATTA Heavy Fox Georgette embroidery work (cut 2.30)

CARE INSTRUCTIONS

- ☉ Dry clean only
- ⚠ Do not use any bleach or stain removing chemical
- ☐ Iron the fabric at moderate temperature
- ☒ Do not dry fabric in direct sunlight



ALAYA

CARE INSTRUCTIONS

- Ⓟ Dry clean only
- ⚠ Do not use any bleach or stain removing chemical
- ⌄ Iron the fabric at moderate temperature
- ☒ Do not dry fabric in direct sunlight

TOP

Heavy Fox Georgette embroidery with Khatli work (cut 2.50)

BOTTOM-INNER

Dull Santoon (cut 4.25)

DUPATTA

Heavy Fox Georgette embroidery work (cut 2.30)



D.No: 1008



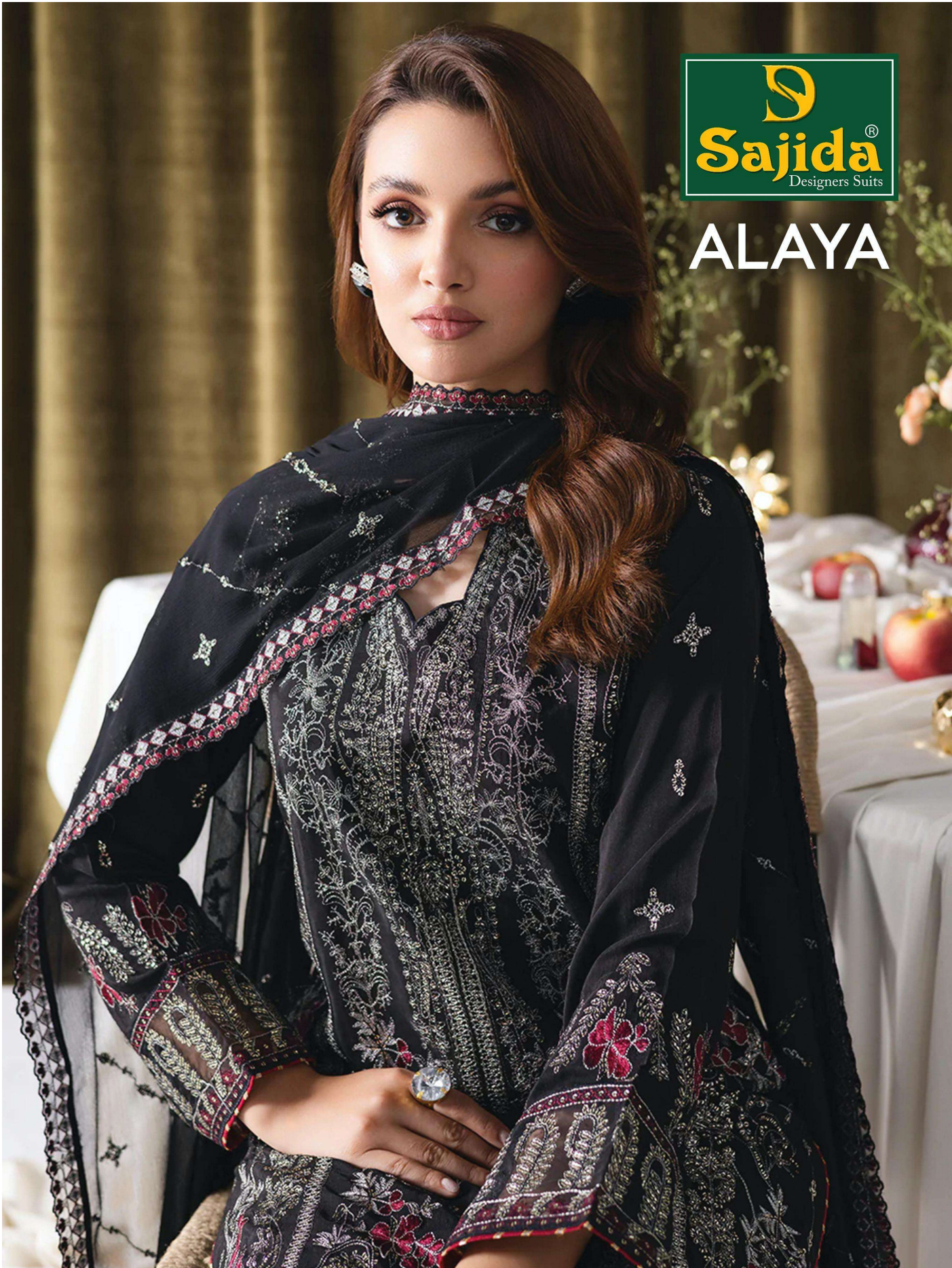
D.No: 1009



D.No: 1010



ALAYA



SajidaTM
Designers Suits



S
SajidaTM
Designers Suits



S
SajidaTM
Designers Suits

