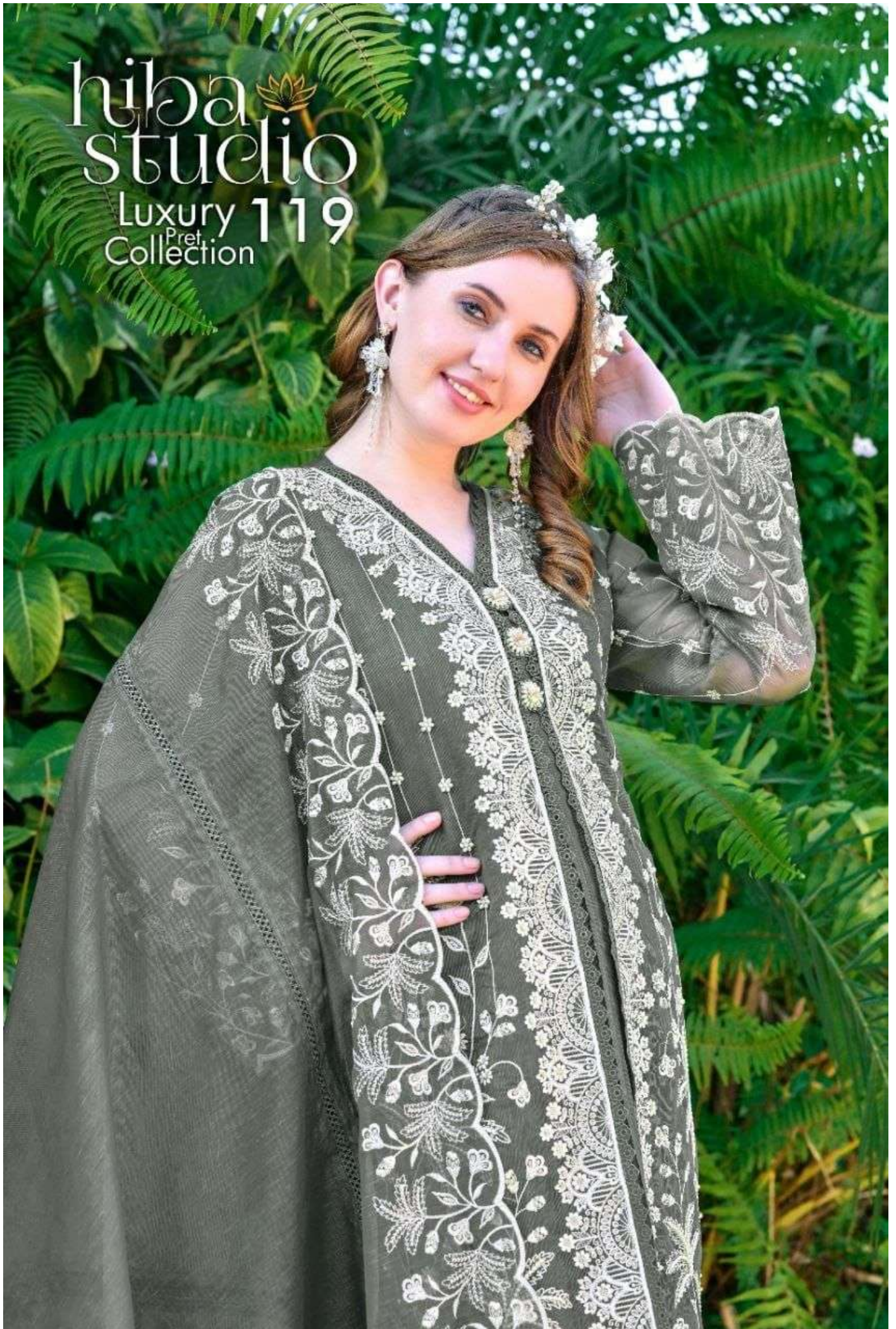


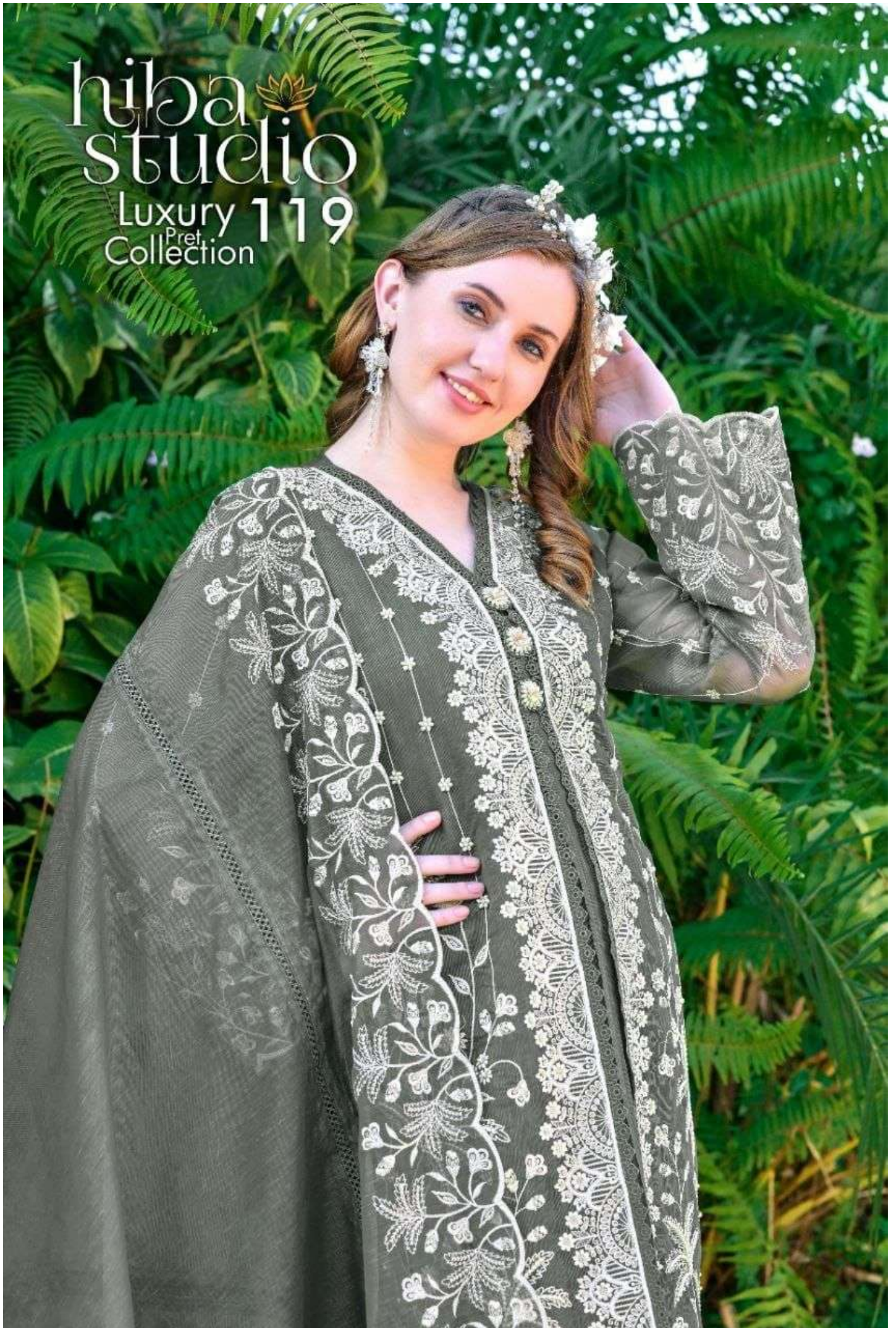
hiba
studio
Luxury 119
Pret.
Collection



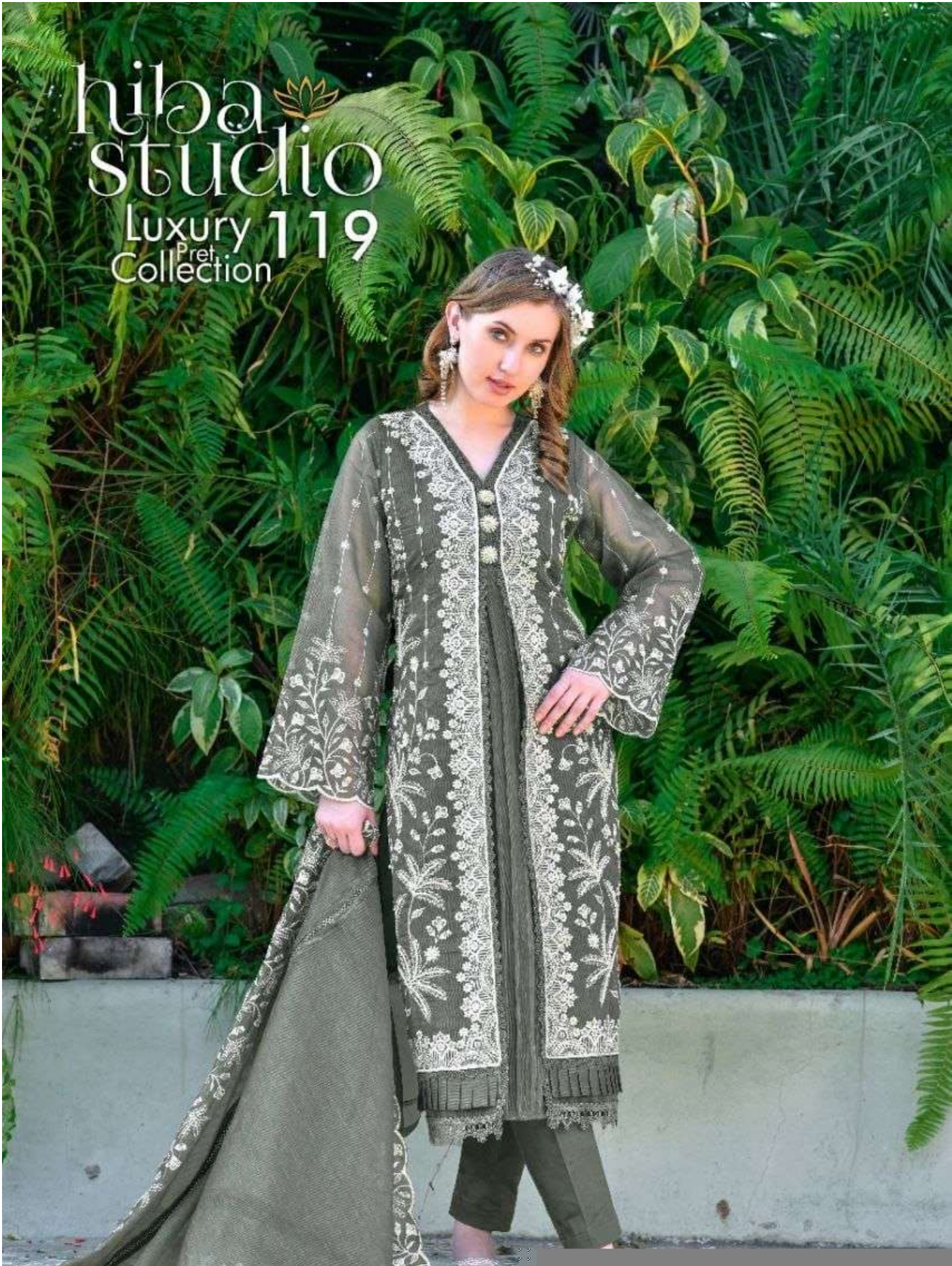
A woman with a white floral crown and large earrings stands in a lush garden. She is wearing a long, flowing brown kaftan with intricate gold embroidery, including floral and palm tree patterns. The kaftan has a V-neckline with gold buttons and wide, flared sleeves. She is also wearing brown trousers and gold sandals. The background is filled with green foliage, including palm trees and ferns, and large grey rocks.

hiba 
studio
Luxury 119
Collection

hiba 
studio
Luxury 119
Pret.
Collection



hiba
studio
Luxury 119
Pret
Collection



hiba
studio
Luxury 119
Collection



hiba
studio
Luxury 119
Pret.
Collection



hiba
studio
Luxury 119
Collection



hiba
studio
Luxury 119
Pret.
Collection



hiba 
studio
Luxury 119
Collection



hiba 
studio
Luxury 119
Collection

