



KRESHVA

विष्णु लक्ष्मी

VISHNU LAXMI



RSM
28



RSW
28



KRESHVA

VISHNU LAXMI

PRODUCT	RATE	QUANTITY
RSM-28	10495/-	
RSM-29	10495/-	
RSM-30	10495/-	
RSM-31	9995/-	
RSM-32	10495/-	
RSM-33	9495/-	
RSM-34	9495/-	
RSM-35	9495/-	
RSM-36	10495/-	
RSM-37	9495/-	
SIZE :-MEN (38 40 42)		



KRESHVA

VISHNU LAXMI

PRODUCT	RATE	QUANTITY
RSW-28	8495/-	
RSW-29	8995/-	
RSW-30	7495/-	
RSW-31	7995/-	
RSW-32	7495/-	
RSW-33	7495/-	
RSW-34	8495/-	
RSW-35	7495/-	
RSW-36	8495/-	
RSW-37	7495/-	
SIZE :WOMEN (38 42)		



**TRADITIONAL
TALE**

♦♦♦♦♦♦♦♦♦♦
RED AND CREAM
MEET GRANDEUR IN
THIS SHERWANI AND
JACKET, WHERE
DYNAMIC PATOLA
PRINTS ADD A TOUCH
OF MODERN ROYALTY.



KRESHVA

RSM
37



◉ RSM-28 ◉



◉ RSM-29 ◉



◉ RSM-30 ◉



◉ RSM-34 ◉



◉ RSM-35 ◉



◉ RSM-36 ◉



◉ RSM-31 ◉



◉ RSM-32 ◉



◉ RSM-33 ◉



◉ RSM-37 ◉

KRESHVA
विष्णु लक्ष्मी
VISHNU LAXMI



• RSW-28 •



• RSW-29 •



• RSW-30 •



• RSW-34 •



• RSW-35 •



• RSW-36 •



• RSW-31 •



• RSW-32 •



• RSW-33 •



• RSW-37 •

KRESHVA
विष्णु लक्ष्मी
VISHNU LAXMI



KRESHVA

PICTURESQUE PATOLA

STEP INTO A CULTURAL MASTERPIECE WITH
THIS RED AND CREAM ANARKALI, ADORNED WITH RICH PATOLA
PRINTS THAT BLEND HERITAGE WITH MODERN FLAIR.

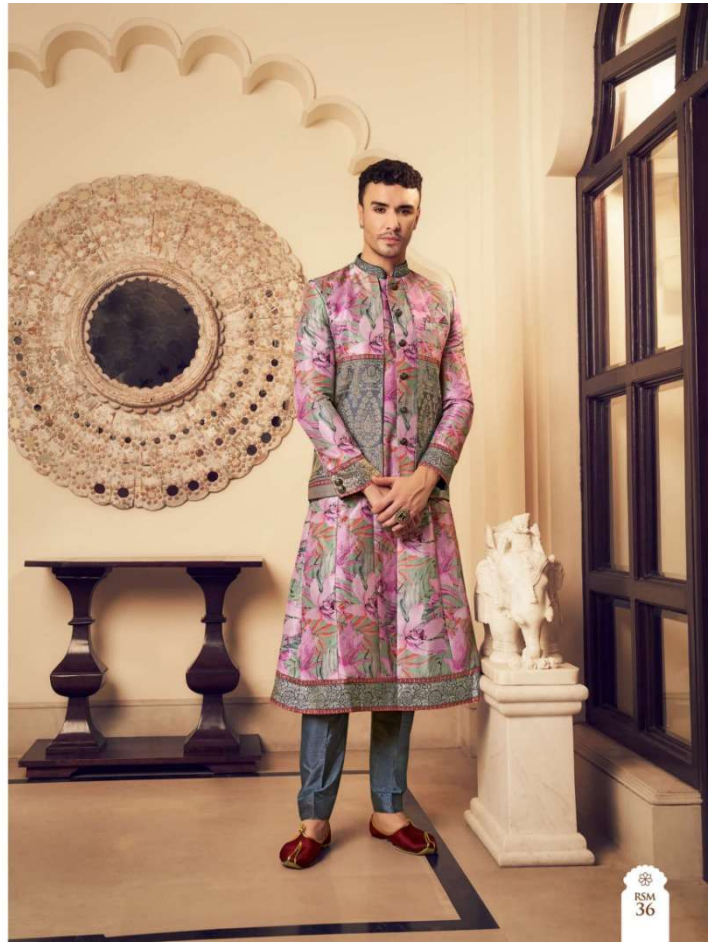


RSW
37



**DREAMY
WEAVES**

STEP INTO A FLORAL
DREAM WITH THIS PINK
AND GREY SHERWANI,
WHERE VIVID PRINTS
AND MUTED TONES
WEAVE A TAPESTRY
OF MODERN GRACE.



FLORAL FAIRYTALE

EMBRACE A FLORAL FAIRYTALE WITH THIS PINK AND GREY ANARKALI, WHERE THE DELICATE INTERPLAY OF COLORS AND PRINTS CRAFTS A VISION OF EFFORTLESS ELEGANCE.

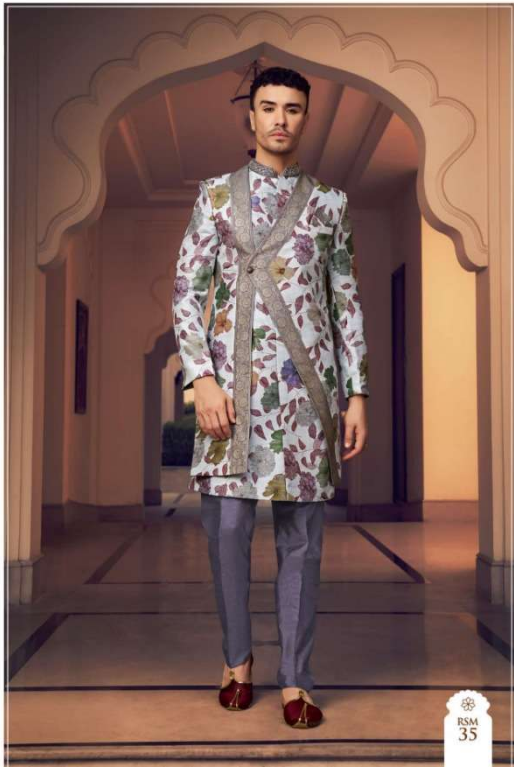


RSW
36



KRESHVA
MODERN CHARM

RADIATE MODERN CHARM IN THIS PASTEL BLUE SHERWANI,
WHERE FLORAL PRINTS WEAVE A FRESH, SOPHISTICATED NARRATIVE.

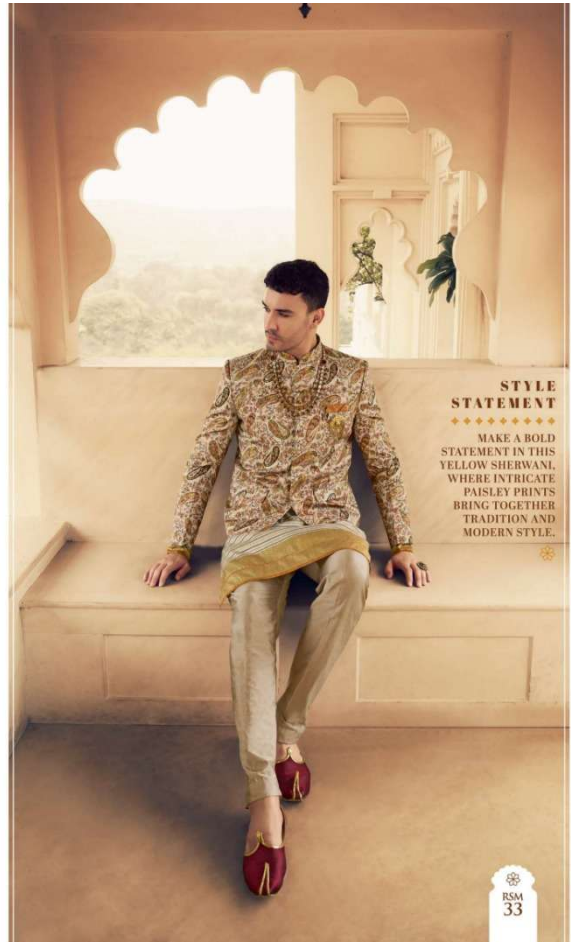


RSM
35





KRESHVA



**STYLE
STATEMENT**

MAKE A BOLD
STATEMENT IN THIS
YELLOW SHERWANI.
WHERE INTRICATE
PAISLEY PRINTS
BRING TOGETHER
TRADITION AND
MODERN STYLE.

RSM
33



KRESHVA

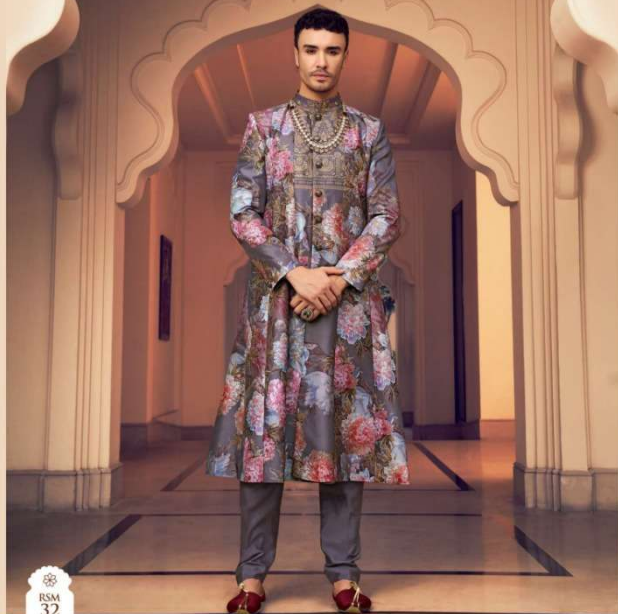
SUNSHINE GLOW

GLOW IN STYLE WITH THIS YELLOW ANARKALI, WHERE CLASSIC PAISLEY PRINTS MEET STYLISH CUTWORK FOR A LOOK THAT'S BOTH TIMELESS AND TRENDY.



RSW 33

KRESHVA



RSM
32

**SUBTLE
CHARM**

COMMAND
ATTENTION IN THIS
FLORAL LILAC
SHERWANI, WHERE
EVERY DETAIL BLOOMS
WITH DISTINGUISHED
CHARM.



KRESHVA



RSW
32

BLOOMING LILAC

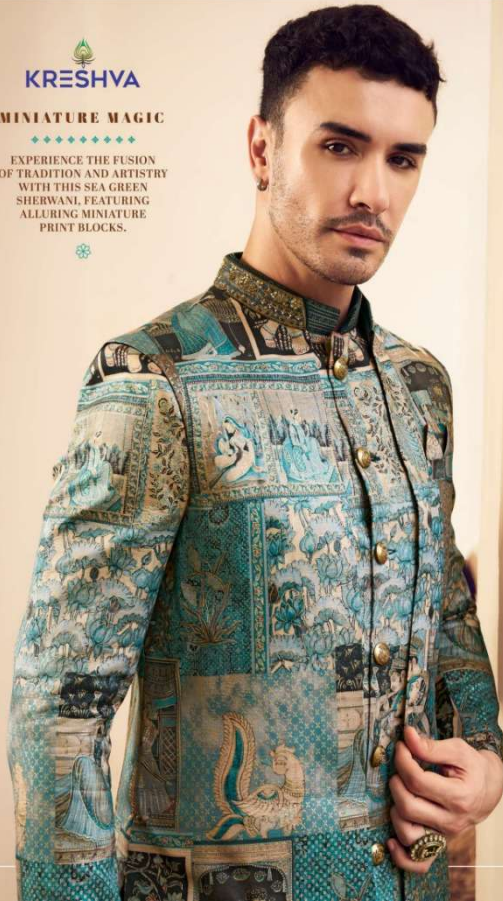
RADIATE CHARM AND
ELEGANCE IN THIS FLORAL
LILAC ANARKALI, WHERE
EVERY BLOSSOM TELLS
A STORY OF TIMELESS
GRACE.





MINIATURE MAGIC

EXPERIENCE THE FUSION
OF TRADITION AND ARTISTRY
WITH THIS SEA GREEN
SHERWANLI, FEATURING
ALLURING MINIATURE
PRINT BLOCKS.

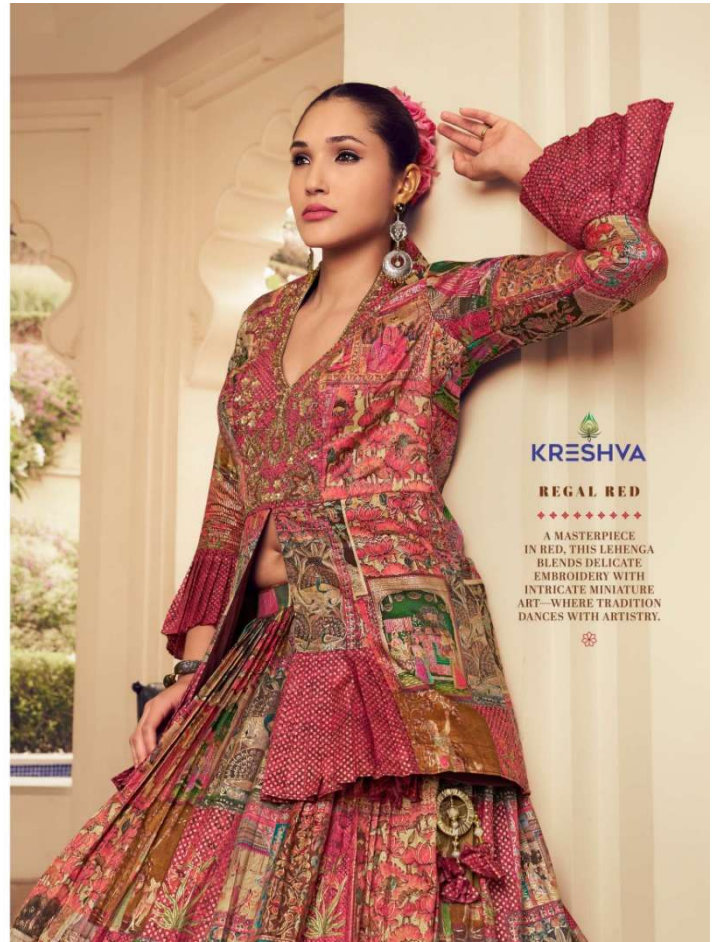
RSM
31

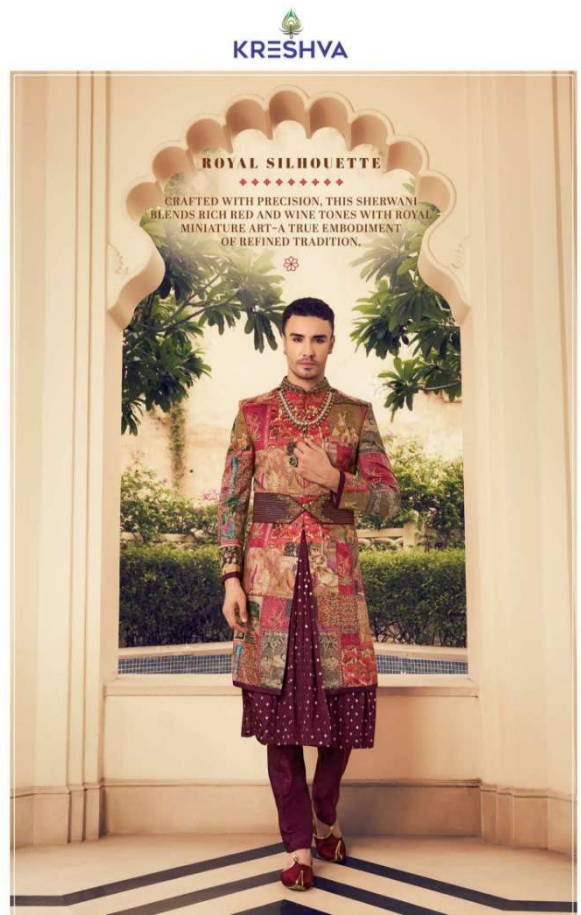


GORGEIOUS GREEN

WHERE ARTISTRY MEETS TRADITION-ROYAL PRINT
BLOCKS ADORN THIS SEA GREEN LEHenga,
CREATING A VISION OF TIMELESS BEAUTY.









KRESHVA

RSM
29

ROYAL SAGA

AN EXQUISITE
CANVAS OF TRADITION,
THIS SHERWANI IN ROYAL
GREEN IS ADORNED WITH
THE ART OF MINIATURE
PAINTING -WHERE
ELEGANCE MEETS
ARTISTRY.





RSW
29

KRESHVA

MINIATURE MAGIC

STEP INTO TIMELESS GRACE WITH OUR ROYAL GREEN
LEHenga, BEAUTIFULLY ADORNED WITH INTRICATE MINIATURE
PAINTING-A BLEND OF ART AND TRADITION.



**TIMELESS
TRADITION**

MAROON SHERWANI
WHERE TRADITION
IS PAINTED WITH
ARTISTRY AND WOVEN
INTO ELEGANCE.

RSM
28

KRESHVA



HERITAGE HEIRLOOM

A MASTERPIECE FOR
THE MODERN BRIDE WHO CHERISHES
HERITAGE WITH A TOUCH OF CREATIVITY.





KRESHVA

विष्णु लक्ष्मी

VISHNU LAXMI



RSM
28



RSW
28