









44305
FABRIC: ZARI ORGANZA SILK
WORK: DUAL SEQUENCE EMBROIDERY WORK





44306

FABRIC: SATIN ORGANZA
 BLOUSE: PRINTED JACQUARD SATIN SILK
 WORK: SWAROVSKI DIAMOND WORK WITH BRUSH





44307

FABRIC: SATIN SILK
BLOUSE: PRINTED JACQUARD SATIN SILK
WORK: SEQUINCE & SWAROVSKI DIAMOND HAND WORK





44308
FABRIC: ZARI ORGANZA SILK
WORK: DUAL SEQUENCE EMBROIDERY WITH APPLIQUE WORK





44309

FABRIC: SATIN ORGANZA SILK
 WORK: DUAL SEQUENCE
 EMBROIDERY WITH STONE WORK









44310

FABRIC: SATIN ORGANZA
BLOUSE: PRINTED JACQUARD SATIN SILK
WORK: DIAMOND & BRUSH PRINT SWAROVSKI WORK



44311
 FABRIC: ZARI ORGANZA SILK
 WORK: DUAL SEQUENCE EMBROIDERY WITH HANDWORK





44312
FABRIC: SATIN SILK
WORK: DUAL SEQUENCE EMBROIDERY WITH APPLIQUE WORK



44313
FABRIC: SATIN ORGANZA
BLOUSE: PRINTED JACQUARD SATIN SILK
WORK: SWAROVSKI STONE WORK WITH BRUSH PRINT

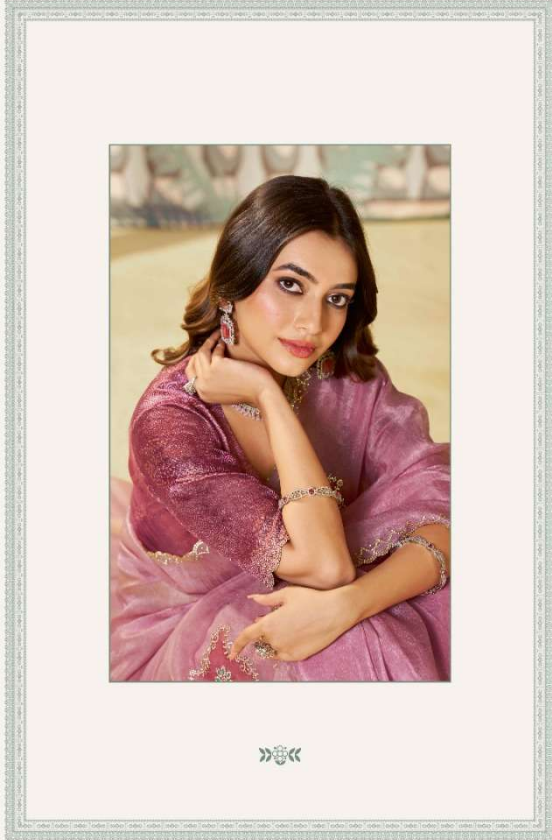




44314

FABRIC: SATIN ORGANZA SILK
BLOUSE: JACQUARD PRINT
WORK: HAND PAINTING WITH SWAROVSKI HAND WORK





44315

FABRIC: SATIN ORGANZA
BLOUSE: PRINTED JAQUARED SATIN SILK
WORK: DIAMOND SWAROVSKI WORK WITH BRUSH PRINT



44316
FABRIC: ZARI ORGANZA SILK
WORK: DUAL SEQUENCE EMBROIDERY
»»««



44317

FABRIC: CRAPE SATIN SILK



44319

FABRIC: CRAPE SATIN SILK



44318

FABRIC: CRAPE SATIN SILK



44303

44304

44305

44306

44307



44313

44314

44315

44316

44317



44308

44309

44310

44311

44312



44318

44319

44320



44320

FABRIC: CRAPE SATIN SILK

DESIGN NO	SAREE FABRIC	BLOUSE FABRIC	WORK	SAREE TYPE	CUSTZ.(SEMISTITCH/UN-STITCH)	BLOUSE SIZE	REMARK
44303	Tussar Silk	Raw Satin Silk	Dual Sequence	Regular	Unstitched Blouse	0.80 Mtr	The first wash of the garment should always be Dry-Cleaned.
44304	Moss Satin Silk Organza	Raw Slub Satin	Dual Sequence, Embroidery, Handwork	Regular	Unstitched Blouse	0.80 Mtr	The first wash of the garment should always be Dry-Cleaned.
44305	Zari Organza Silk	Raw Slub Satin	Dual Sequence, Embroidery	Regular	Unstitched Blouse	0.80 Mtr	The first wash of the garment should always be Dry-Cleaned.
44306	Satin Organza Silk	Jaquard Satin Silk	Swarovski Diamond Work With Brush Print	Regular	Unstitched Blouse	0.80 Mtr	The first wash of the garment should always be Dry-Cleaned.
44307	Satin Silk	Jaquard Satin Silk	Sequence, Swarovski Diamond Hand Work	Regular	Unstitched Blouse	0.80 Mtr	The first wash of the garment should always be Dry-Cleaned.
44308	Zari Organza Silk	Raw Slub Satin	Dual Sequence, Embroidery, Applique Work	Regular	Unstitched Blouse	0.80 Mtr	The first wash of the garment should always be Dry-Cleaned.
44309	Satin Organza Silk	Two Tone Satin Silk	Dual Sequence, Embroidery, Stone Work	Regular	Unstitched Blouse	0.80 Mtr	The first wash of the garment should always be Dry-Cleaned.
44310	Satin Organza Silk	Jaquard Satin Silk	Diamond, Brush Print, Swarovski work	Regular	Unstitched Blouse	0.80 Mtr	The first wash of the garment should always be Dry-Cleaned.
44311	Zari Organza Silk	Raw Satin Silk	Dual Sequence, Embroidery, Handwork	Regular	Unstitched Blouse	0.80 Mtr	The first wash of the garment should always be Dry-Cleaned.
44312	Satin Silk	Two Tone Satin Silk	Dual Sequence, Embroidery, Applique Work	Regular	Unstitched Blouse	0.80 Mtr	The first wash of the garment should always be Dry-Cleaned.
44313	Satin Organza Silk	Jaquard Satin Silk	Swarovski Stone Work With Brush Print	Regular	Unstitched Blouse	0.80 Mtr	The first wash of the garment should always be Dry-Cleaned.
44314	Satin Organza Silk	Jaquard	Hand Print, Swarovski Hand Work	Regular	Unstitched Blouse	0.80 Mtr	The first wash of the garment should always be Dry-Cleaned.
44315	Satin Organza Silk	Jaquard Satin Silk	Diamond, Brush Print, Swarovski work	Regular	Unstitched Blouse	0.80 Mtr	The first wash of the garment should always be Dry-Cleaned.
44316	Zari Organza Silk	Two Tone Satin Silk	Dual Sequence, Embroidery	Regular	Unstitched Blouse	0.80 Mtr	The first wash of the garment should always be Dry-Cleaned.
44317	Crepe Satin Silk	Satin Silk	Jardosi, Handwork	Regular	Unstitched Blouse	0.80 Mtr	The first wash of the garment should always be Dry-Cleaned.
44318	Crepe Satin Silk	Satin Silk	Sequence, Handwork	Regular	Unstitched Blouse	0.80 Mtr	The first wash of the garment should always be Dry-Cleaned.
44319	Crepe Satin Silk	Crepe Satin Silk	Jardosi, Handwork	Regular	Unstitched Blouse	0.80 Mtr	The first wash of the garment should always be Dry-Cleaned.
44320	Pure Satin Silk	Satin Silk	Jardosi, Sequence	Regular	Unstitched Blouse	0.80 Mtr	The first wash of the garment should always be Dry-Cleaned.