



FLORENT®





FLORENT

D. no- 1848-F

TOP- C/AMBRIC COTTON WITH HEAVY EMBROIDERY  
MIDLETA - MARLIN COTTON WITH HEAVY EMBROIDERY  
BOTTOM- C/AMBRIC COTTON



D.NO.1048-A



D.NO.1048-B



D.NO.1048-C



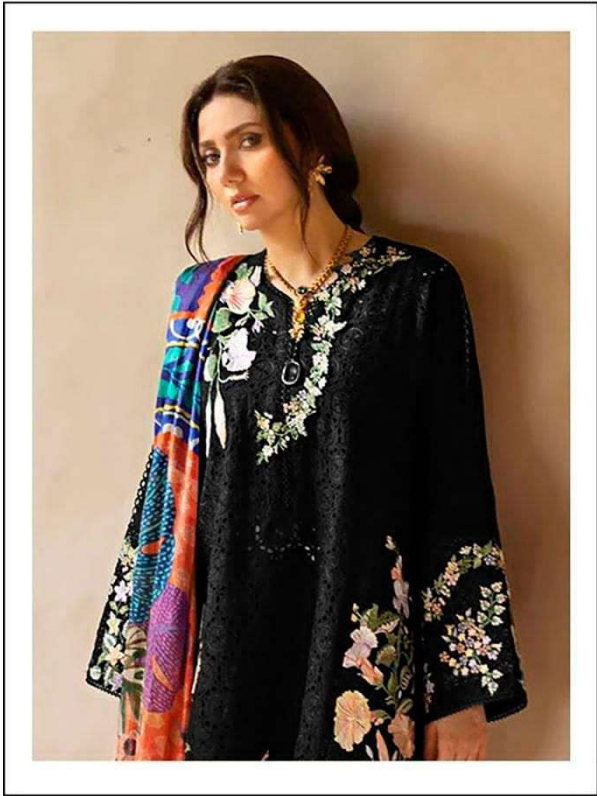
D.NO.1048-D



D.NO.1048-E



D.NO.1048-F



**D.no-1048-A**

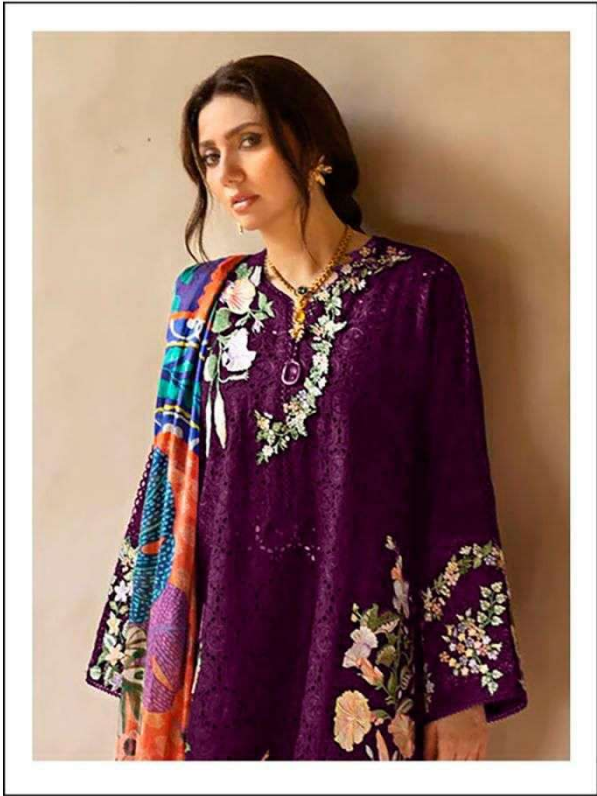
TOP :-CAMBRIC COTTON WITH HEAVY EMBROIDERY WORK  
DUPATTA :-MASLIN COTTON WITH DIGITAL PRINT  
BOTTOM:-CAMBRIC COTTON





FLORENT®





**D.no-1048-B**

TOP :-CAMBRIC COTTON WITH HEAVY EMBROIDERY WORK  
DUPATTA :-MASLIN COTTON WITH DIGITAL PRINT  
BOTTOM:-CAMBRIC COTTON





**D.no-1048-D**

TOP :-CAMBRIC COTTON WITH HEAVY EMBROIDERY WORK  
DUPATTA :-MASLIN COTTON WITH DIGITAL PRINT  
BOTTOM:-CAMBRIC COTTON



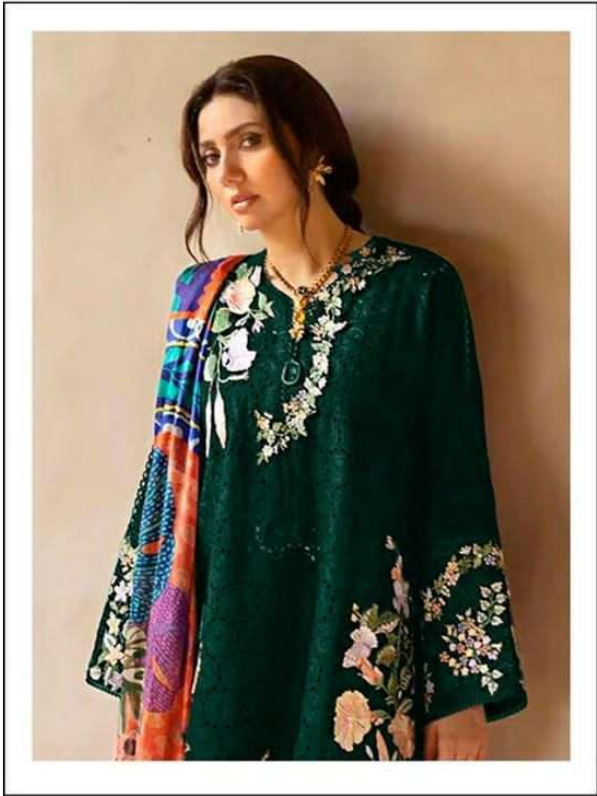


D.no-1048-E

TOP :-CAMBRIC COTTON WITH HEAVY EMBROIDERY WORK  
DUPATTA :-MASLIN COTTON WITH DIGITAL PRINT  
BOTTOM:-CAMBRIC COTTON







**D.no-1048-F**

TOP :-CAMBRIC COTTON WITH HEAVY EMBROIDERY WORK  
DUPATTA :-MASLIN COTTON WITH DIGITAL PRINT  
BOTTOM:-CAMBRIC COTTON





50-100-100-100  
TOP: CAMBRIC COTTON WITH HEAVY EMBROIDERY WORK  
DUPATTA: SHALIN COTTON WITH DIGITAL PRINT  
BOTTOM: CAMBRIC COTTON





0.000.1848-C  
TOP: CAMBRIC COTTON WITH HEAVY EMBROIDERY WORK  
IN PASTA - MASH IN COTTON WITH DIGITAL PRINT  
BOTTOM: CAMBRIC COTTON





D. no-1948-E  
TOP - CARRIBE COTTON WITH BIRHATA - MALIN COTTON  
BOTTOM - CARRIBE COTTON

FLORENT

