

A woman with dark hair styled in a bun, wearing a purple lace dress with a high collar and long sleeves. She is also wearing a gold headband, large gold earrings with green and white stones, and several gold rings. The background is a light-colored wall with a faint floral pattern.

Sajida[®]
DESIGNERS SUIT

Naira

Vol-1

A woman with dark hair styled in a bun, wearing a purple lace dress with a high collar and long sleeves. She is also wearing a gold headband, large gold earrings with green and white stones, and several gold rings. The background is a light-colored wall with a faint floral pattern.

Sajida[®]
DESIGNERS SUIT

Naira

Vol-1

Sajida[®]
DESIGNERS SUIT

Naira Vol-1



SDS -1149-D

TOP Fox Georgette with Heavy Embroidery With Khatli Work (cut 2.50)

BOTTOM-INNER Dull Santoon (cut 4.25)

DUPATTA Fox Georgette with Heavy Embroidery (cut 2.50)

CARE INSTRUCTIONS

- ☐ Dry clean only
- ☒ Do not use any bleach or stain removing chemical
- ☐ Iron the fabric at moderate temperature
- ☒ Do not dry fabric in direct sunlight

Sajida[®]
DESIGNERS SUIT

Naira Vol-1



SDS -1149-B

TOP Fox Georgette with Heavy Embroidery With Khatli Work (cut 2.50)

BOTTOM-INNER Dull Santoon (cut 4.25)

DUPATTA Fox Georgette with Heavy Embroidery (cut 2.50)

CARE INSTRUCTIONS

- ☐ Dry clean only
- ☒ Do not use any bleach or stain removing chemical
- ☒ Iron the fabric at moderate temperature
- ☒ Do not dry fabric in direct sunlight



READYMADE COLLECTION

Naira-1

TOP Heavy Fox Georgette Embroidery with Khatli work (cut 2.50)

BOTTOM-INNER Dull Santoon (cut 4.25)

DUPATTA Heavy Fox Georgette Embroidery work (cut 2.30)

CARE INSTRUCTIONS

- ☉ Dry clean only
- ⚠ Do not use any bleach or stain removing chemical
- ☐ Iron the fabric at moderate temperature
- ☒ Do not dry fabric in direct sunlight



D.No.1149-A



D.No.1149-B



D.No.1149-C



D.No.1149-D

Sajida[®]
DESIGNERS SUIT

Naira Vol-1



SDS -1149-A

TOP Fox Georgette with Heavy Embroidery With Khatli Work (cut 2.50)

BOTTOM-INNER Dull Santoon (cut 4.25)

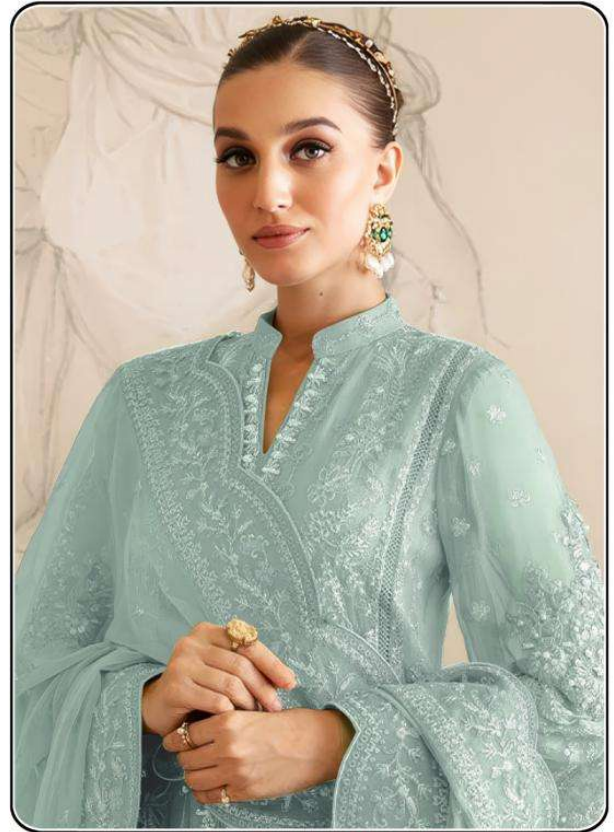
DUPATTA Fox Georgette with Heavy Embroidery (cut 2.50)

CARE INSTRUCTIONS

- ☐ Dry clean only
- ☒ Do not use any bleach or stain removing chemical
- ☐ Iron the fabric at moderate temperature
- ☒ Do not dry fabric in direct sunlight

Sajida[®]
DESIGNERS SUIT

Naira Vol-1



SDS -1149-C

TOP Fox Georgette with Heavy Embroidery With Khatli Work (cut 2.50)

BOTTOM-INNER Dull Santoon (cut 4.25)

DUPATTA Fox Georgette with Heavy Embroidery (cut 2.50)

CARE INSTRUCTIONS

- ☐ Dry clean only
- ☒ Do not use any bleach or stain removing chemical
- ☒ Iron the fabric at moderate temperature
- ☒ Do not dry fabric in direct sunlight