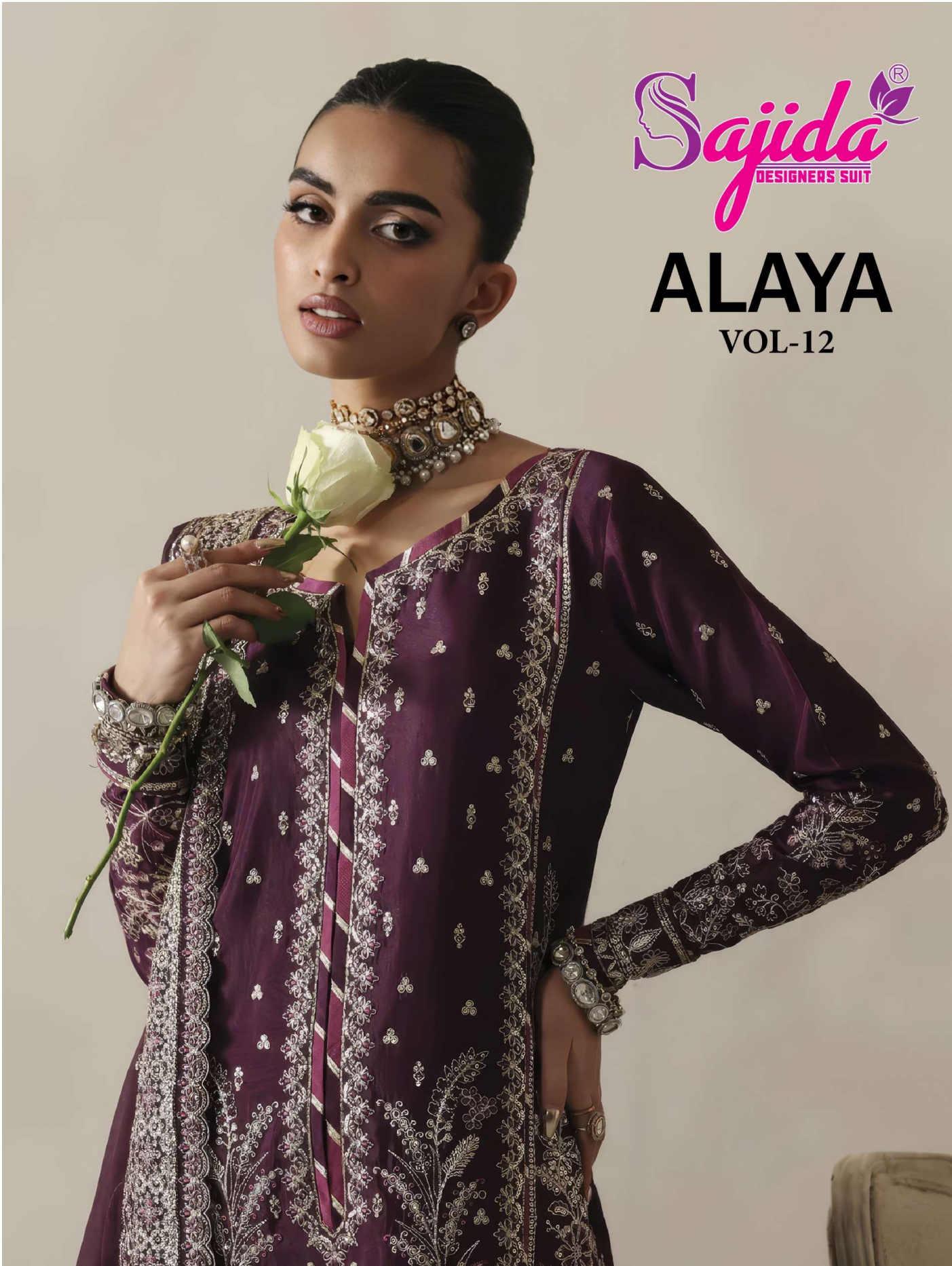


Sajida[®]
DESIGNERS SUIT

ALAYA
VOL-12





Sajida[®]
DESIGNERS SUIT

ALAYA
VOL-12



SDS -1159

TOP Fox Georgette with Heavy Embroidery With Khatli Work (cut 2.50)

BOTTOM-INNER Dull Santoon (cut 4.25)

DUPATTA Fox Georgette with Heavy Embroidery (cut 2.50)

CARE INSTRUCTIONS

- ☉ Dry clean only
- ✘ Do not use any bleach or stain removing chemical
- ☐ Iron the fabric at moderate temperature
- ☒ Do not dry fabric in direct sunlight



ALAYA

VOL-12

TOP Heavy Fox Georgette embroidery with Khatli work (cut 2.50)

BOTTOM-INNER Dull Santoon (cut 4.25)

DUPATTA Heavy Fox Georgette embroidery work (cut 2.30)

CARE INSTRUCTIONS

- ☐ Dry clean only
- ⚠ Do not use any bleach or stain removing chemical
- ☐ Iron the fabric at moderate temperature
- ☒ Do not dry fabric in direct sunlight



D.No.1159



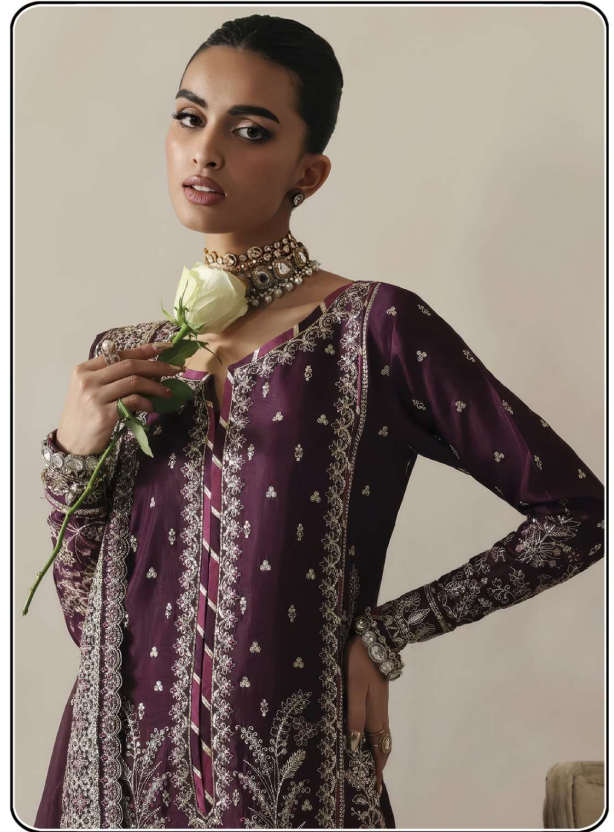
D.No.1160



D.No.1161

Sajida[®]
DESIGNERS SUIT

ALAYA
VOL-12



SDS -1161

TOP Fox Georgette with Heavy Embroidery With Khatli Work (cut 2.50)

BOTTOM-INNER Dull Santoon (cut 4.25)

DUPATTA Fox Georgette with Heavy Embroidery (cut 2.50)

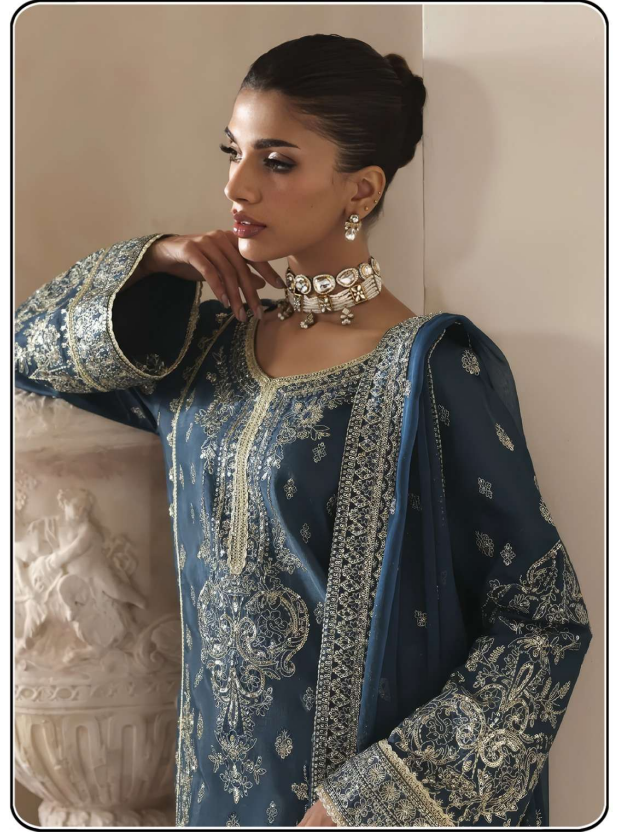
CARE INSTRUCTIONS

- ☐ Dry clean only
- ☒ Do not use any bleach or stain removing chemical
- ☐ Iron the fabric at moderate temperature
- ☒ Do not dry fabric in direct sunlight



Sajida[®]
DESIGNERS SUIT

ALAYA
VOL-12



SDS -1160

TOP Fox Georgette with Heavy Embroidery With Khatli Work (cut 2.50)

BOTTOM-INNER Dull Santoon (cut 4.25)

DUPATTA Fox Georgette with Heavy Embroidery (cut 2.50)

CARE INSTRUCTIONS

- ☉ Dry clean only
- ✘ Do not use any bleach or stain removing chemical
- ☐ Iron the fabric at moderate temperature
- ☒ Do not dry fabric in direct sunlight

Sajida[®]
DESIGNERS SUIT

ALAYA
VOL-12

