

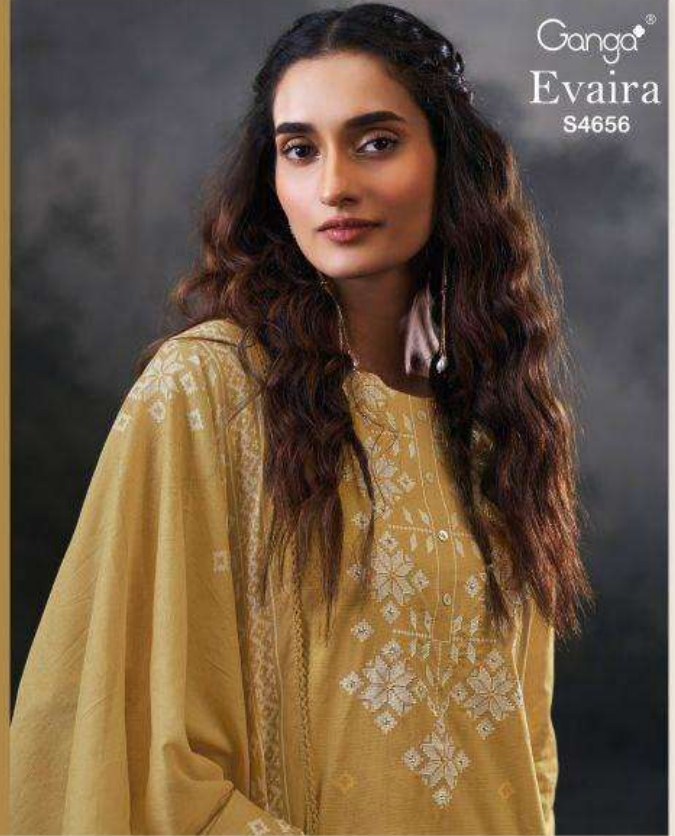
Ganga®
Evaira
S4656



Ganga®

Ganga®
Evaira
S4656

Evaira
S4656



DESCRIPTION

~TOP~

PREMIUM COTTON PRINTED WITH HAND WORK,
HAND EMBROIDERY, BUTTON WORK, SCHIFFLI
EMBROIDERY LACE ON DAMAN & SLEEVES.

~BOTTOM~

PREMIUM COTTON SATIN SOLID COLOR

~DUPATTA~

PREMIUM COTTON MUL PRINTED WITH CROCHET
LACE BORDER.

WHOLE SALE PRICE
1590/- EACH+GST(EXTRA)

MOQ : 64 PCS
HSN CODE- 520851

Ganga[®]

S4656-A





S4656-A



S4656-B



S4656-C



S4656-D

Ganga®
Evaira
S4656- A/B/C/D

Ganga[®]
S4656-D



Ganga[®]
S4656-D



Ganga[®]
S4656-C



Ganga[®]
S4656-C



Ganga[®]

S4656-B



Ganga[®]

S4656-B



Ganga[®]
S4656-A



Ganga®
Evaira
S4656

