

Ganga®  
Claria  
S4646



Ganga<sup>®</sup>  
S4646-A



Ganga<sup>®</sup>  
S4646-D

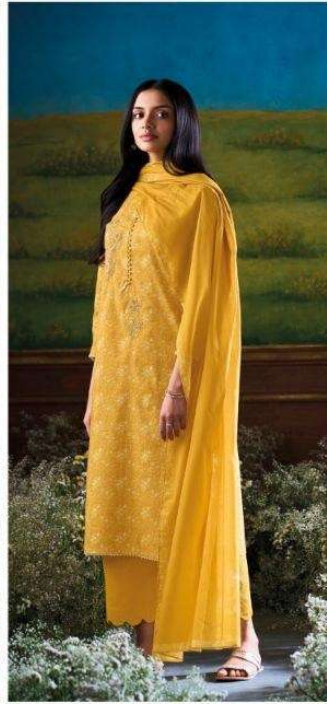


Ganga<sup>®</sup>  
S4646-D

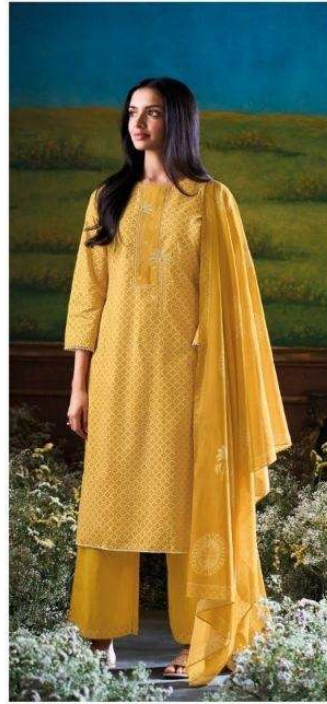




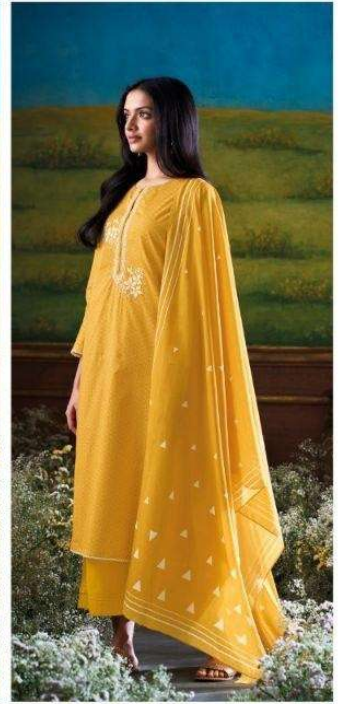
S4646-A



S4646-B



S4646-C



S4646-D

Ganga®  
Claria  
S4646- A/B/C/D

Ganga<sup>®</sup>

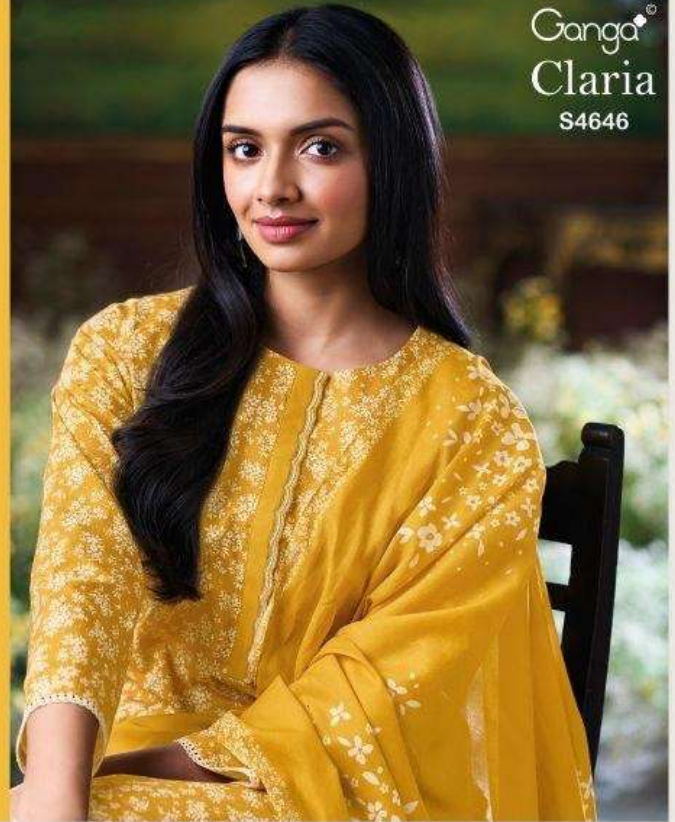
S4646-A



Ganga®

Ganga®  
Claria  
S4646

Claria  
S4646



—DESCRIPTION—

~TOP~

PREMIUM COTTON PRINTED WITH EMBROIDERY,  
BUTTON WORK, HAND WORK, CROCHET LACE  
BORDER ON DAMAN & SLEEVES.

~BOTTOM~

PREMIUM COTTON SOLID COLOR.

~DUPATTA~

PREMIUM COTTON MUL PRINTED.

**WHOLESALE PRICE**  
**1470/- EACH+GST(EXTRA)**

HSN CODE- 520851

MOQ : 64 PCS

TOTAL SUITS-04

Ganga<sup>®</sup>

S4646-B

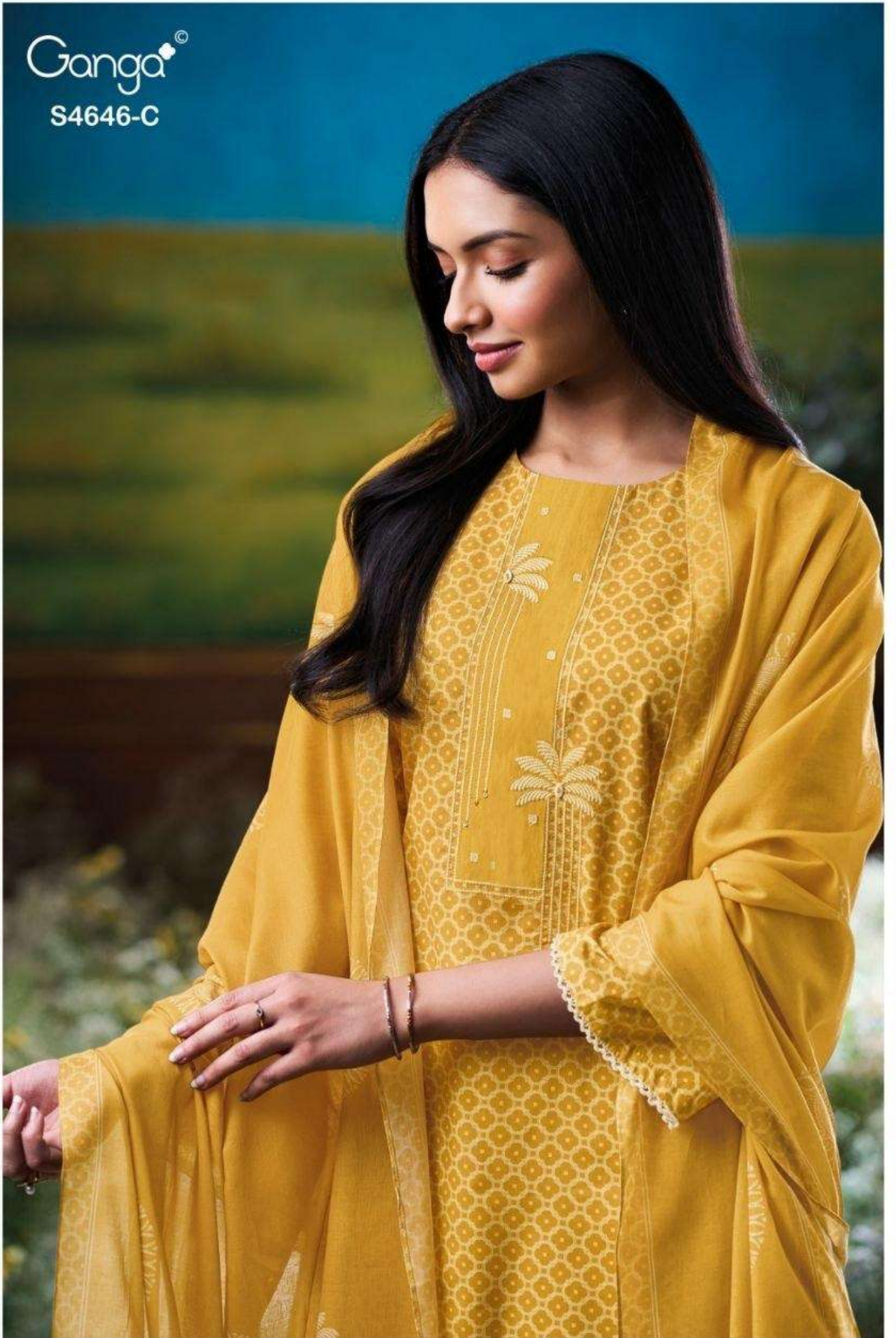


Ganga<sup>®</sup>  
S4646-C



Ganga<sup>®</sup>

S4646-C



Ganga®  
Claria  
S4646



Ganga<sup>®</sup>

S4646-B

