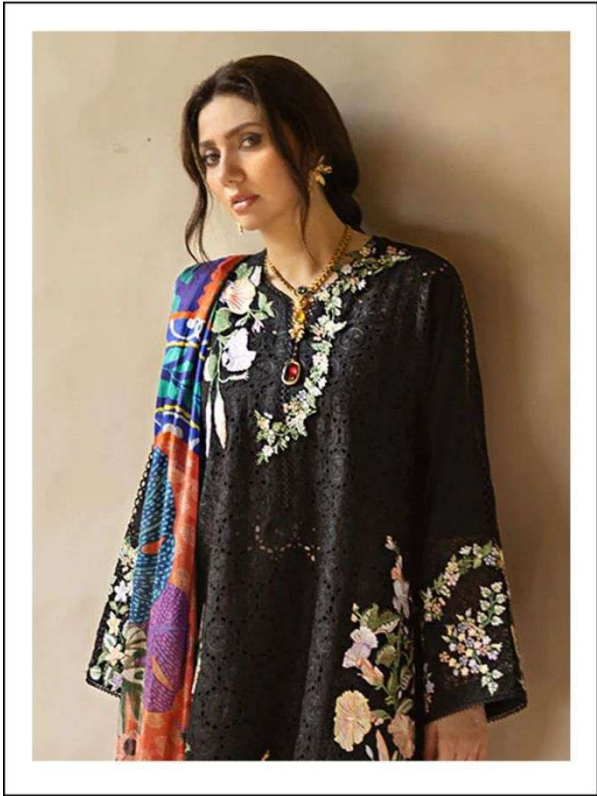


JT D.NO.176 B

TOP :-CAMBRIC COTTON WITH HEAVY EMBROIDERY WORK
DUPATTA :-MASLIN COTTON WITH DIGITAL PRINT
BOTTOM:-CAMBRIC COTTON

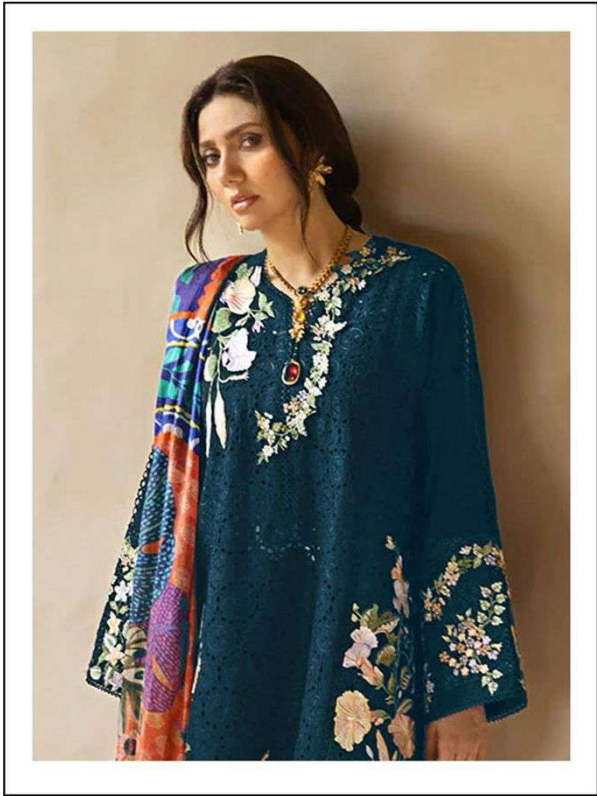




JT D.NO.176

TOP :-CAMBRIC COTTON WITH HEAVY EMBROIDERY WORK
DUPATTA :-MASLIN COTTON WITH DIGITAL PRINT
BOTTOM:-CAMBRIC COTTON

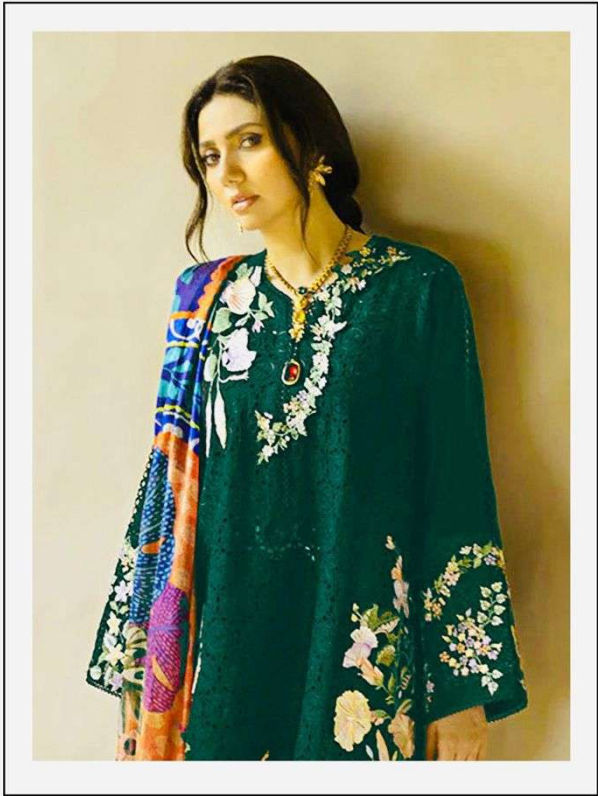




JT D.NO.176 D

TOP :-CAMBRIC COTTON WITH HEAVY EMBROIDERY WORK
DUPATTA :-MASLIN COTTON WITH DIGITAL PRINT
BOTTOM:-CAMBRIC COTTON





JT D.NO.176 C

TOP :-CAMBRIC COTTON WITH HEAVY EMBROIDERY WORK
DUPATTA :-MASLIN COTTON WITH DIGITAL PRINT
BOTTOM:-CAMBRIC COTTON



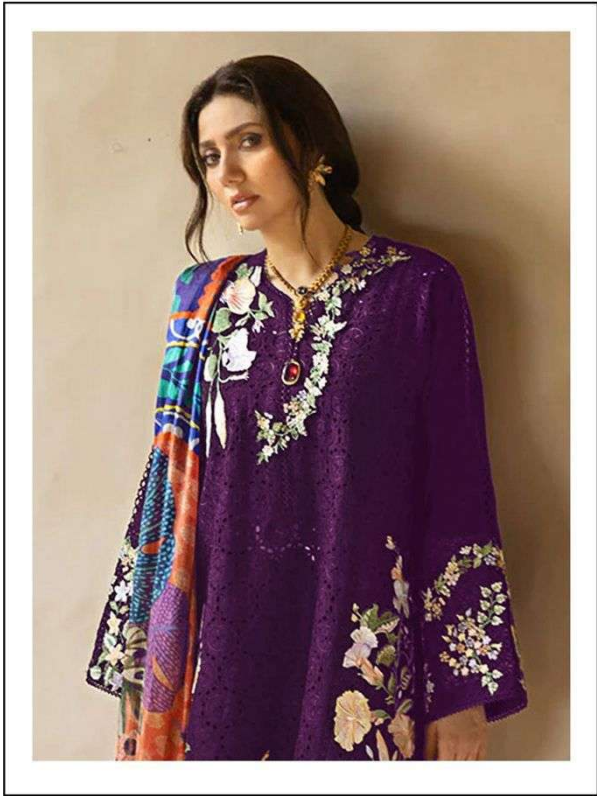




TOP - CAMBRIC COTTON WITH HEAVY EMBROIDERY WORK
DUPATTA - MASALA COTTON WITH DIGITAL PRINT
BOTTOM - CAMBRIC COTTON

JTD.NO.1768

JOËRA
TEX



JT D.NO.176 B

TOP :-CAMBRIC COTTON WITH HEAVY EMBROIDERY WORK
DUPATTA :-MASLIN COTTON WITH DIGITAL PRINT
BOTTOM:-CAMBRIC COTTON





JT D.NO.176 D

TOP:-CAMBRIC COTTON WITH HEAVY EMBROIDERY WORK
DUPATTA :-MASLIN COTTON WITH DIGITAL PRINT
BOTTOM:-CAMBRIC COTTON

**JOHRA
TEX**