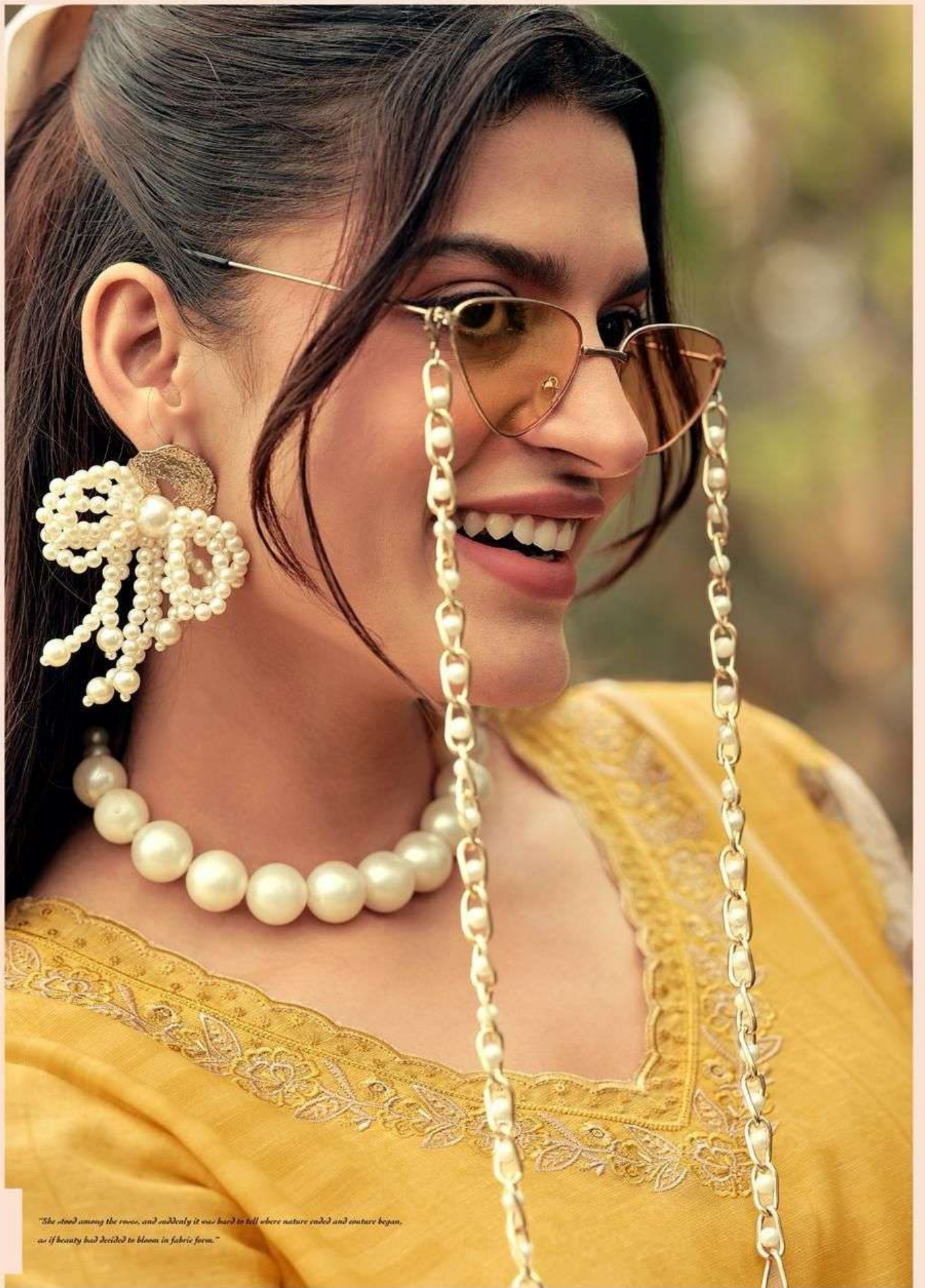
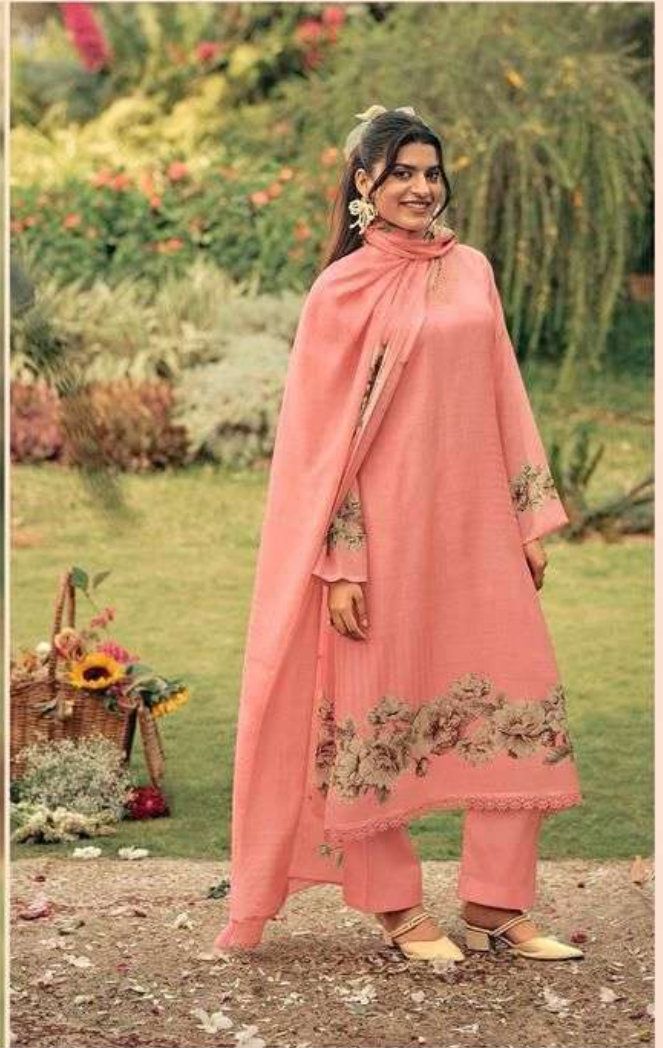


A woman with long dark hair, wearing a pink sari with large floral patterns, is smiling and holding a large bouquet of sunflowers. She is wearing a pearl necklace and large pearl earrings. The background is a field of sunflowers.

“SOFT BLOOMS STRONG STYLE”



*"She stood among the snow, and suddenly it was hard to tell where nature ended and couture began,
as if beauty had decided to bloom in fabric form."*



A woman with long dark hair, wearing a pink floral dress and a pearl necklace, is smiling and holding a large bouquet of sunflowers. The background is a field of sunflowers. The text "SOFT BLOOMS STRONG STYLE" is overlaid on the image.

“SOFT BLOOMS STRONG STYLE”



MANN RASIYA

Bloome







"Among whispering leaves and sunlit petals, her style felt less like something worn and more like something grown — natural, radiant, and impossible to ignore."



MANN RASIYA



3127

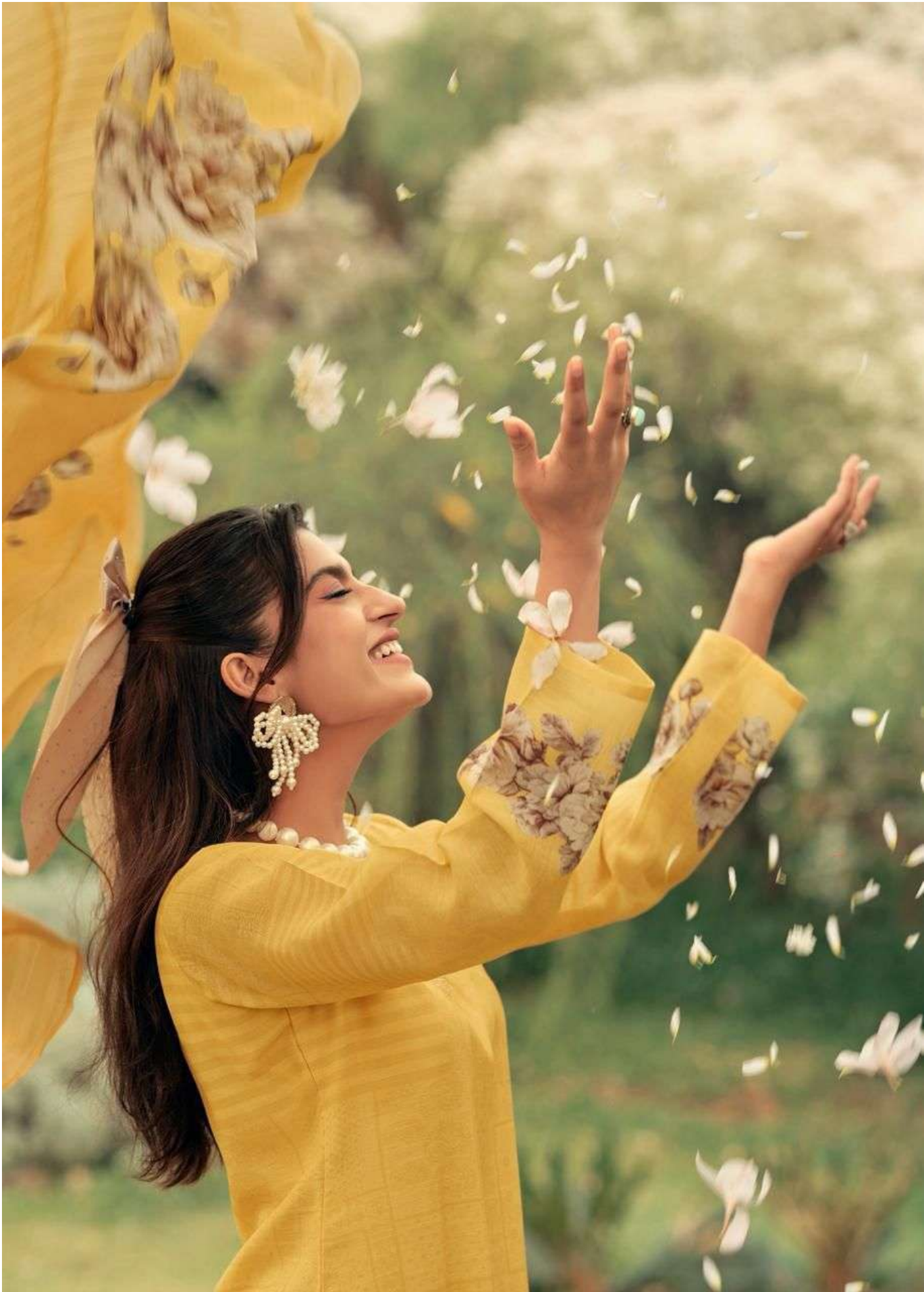


MANN RASIYA



*"Petals fell, light danced, and her dress moved like part of the landscape —
proving that the most timeless fashion is the kind that belongs to nature."*





“ELEGANCE IN FULL BLOOM”



*"She stood among the roses, and suddenly it was hard to tell where nature ended and
culture began, as if beauty had decided to bloom in fabric form."*

MANN RASIYA



3124



"Fashion in a garden feels different, softer — where silk moves like wind through branches and every thread seems to carry the poetry of the earth."

MANN RASIYA
Bloome



3124



3125



3126



3127

MANN RASIYA



3126



MANN RASIYA



3125