

Ganga<sup>®</sup>  
Kynza  
S4729



Ganga<sup>®</sup>

S4729-B





S4729-A



S4729-B



S4729-C



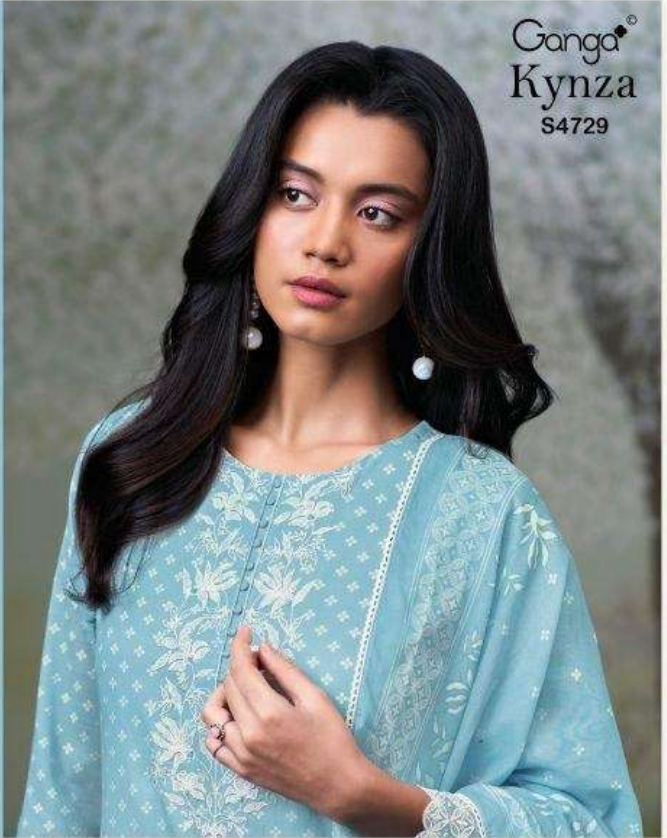
S4729-D

Ganga®  
Kynza  
S4729- A/B/C/D

Ganga®

Ganga®  
Kynza  
S4729

Kynza  
S4729



—DESCRIPTION—

~TOP~

PREMIUM PURE BEMBERG MUL PRINTED WITH EMBROIDERY ON NECK & HAND WORK, EMBROIDERY LACE ON SLEEVES, CROCHET LACE ON DAMAN.

~BOTTOM~

PREMIUM COTTON SOLID COLOR

~DUPATTA~

PREMIUM PURE BEMBERG MUL PRINTED WITH CROCHET LACE BORDER.

**WHOLESALE PRICE**  
**1970/- EACH+GST(EXTRA)**

HSN CODE- 540834

MOQ : 64 PCS

TOTAL SUITS-04

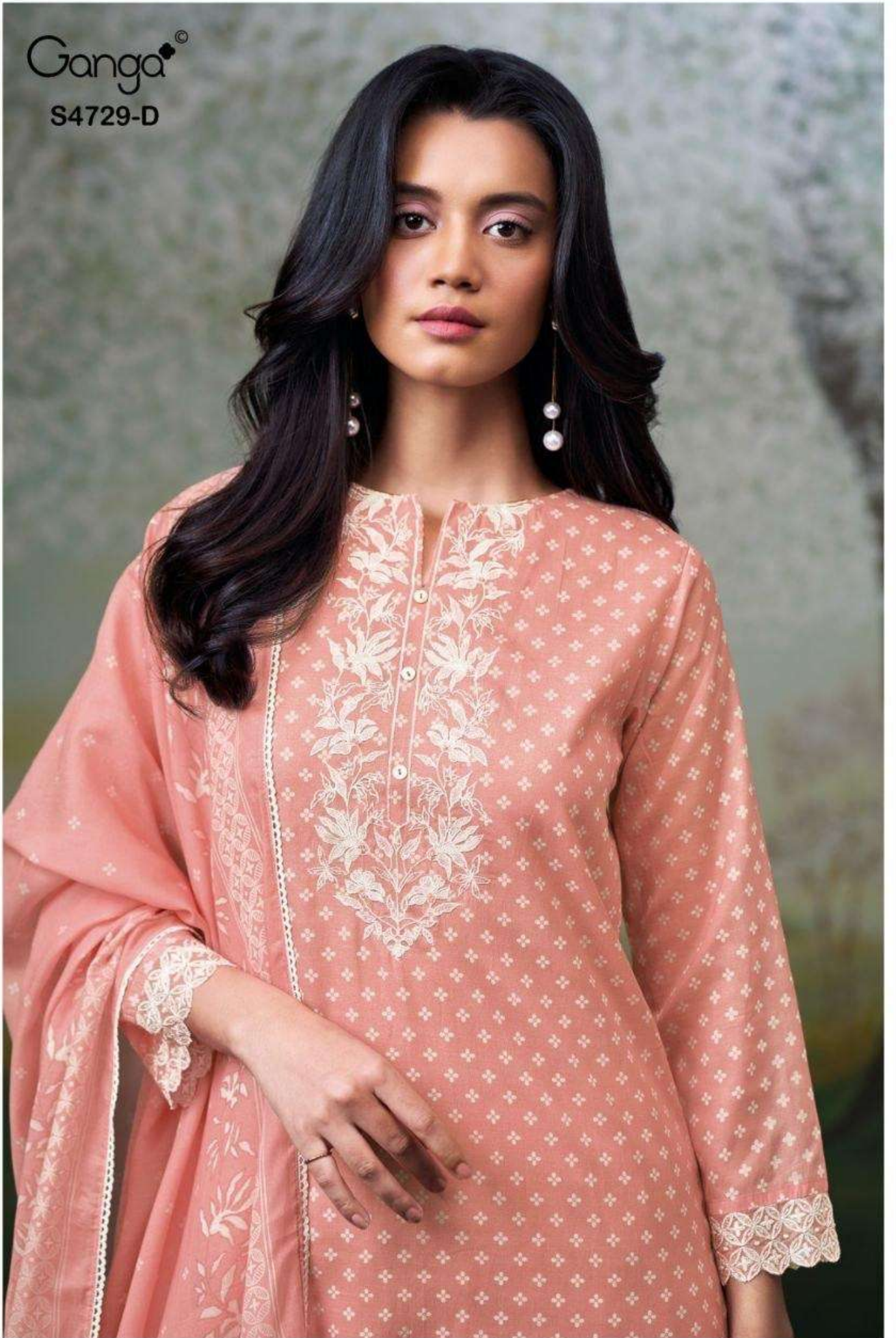
Ganga<sup>®</sup>

S4729-D



Ganga®

S4729-D



Ganga<sup>®</sup>

S4729-C



Ganga<sup>®</sup>  
S4729-C



Ganga<sup>®</sup>

S4729-B



Ganga<sup>®</sup>  
Kynza  
S4729



Ganga<sup>®</sup>

S4729-A



Ganga<sup>®</sup>

S4729-A

