

Rajpath™  
*The Way Of Style*

# Anvika Light Edition



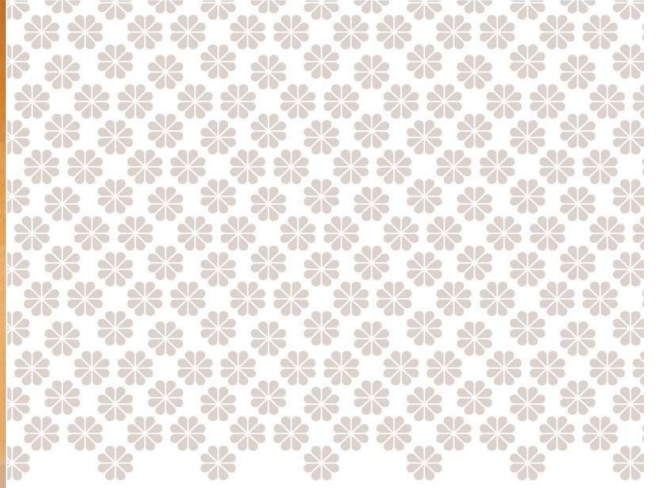
*The Way Of Style*



complimentary copy not for sale.



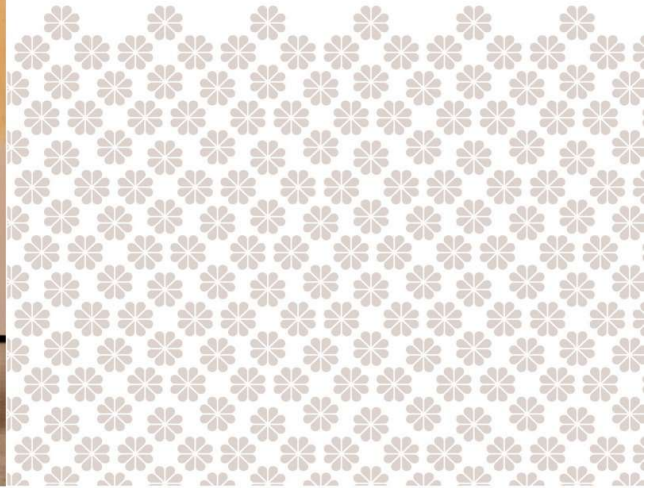
562  

  
**Rajpath**<sup>TM</sup>  
*The Way Of Style*  
**Tissue Silk**



565  



560  
🌀



561  
🌀



563  
🌀



564  
🌀

Rajpath™  
*The Way Of Style*

Tissue Silk

565





Rajpath™  
*The Way Of Style*

Tissue Silk

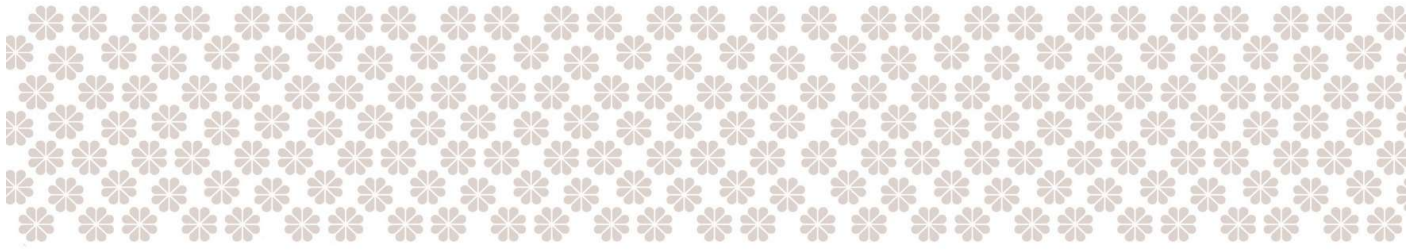


B E A U T Y

"Don't be into trends. Don't make fashion own you, but you decide what you are, what you want to express by the way you saree and the way to live."







# E T H N I C D E S I G N



"Don't be into trends. Don't make fashion own you, but you decide what you are, what you want to express by the way you saree and the way to live."



Rajpath™  
*The Way Of Style*

Tissue Silk

F A S H I O N

"Don't be into trends. Don't make fashion own you, but you decide what you are, what you want to express by the way you saree and the way to live."



Rajpath™  
*The Way Of Style*

Tissue Silk

564









Rajpath™  
*the way to style*

Tissue Silk

563



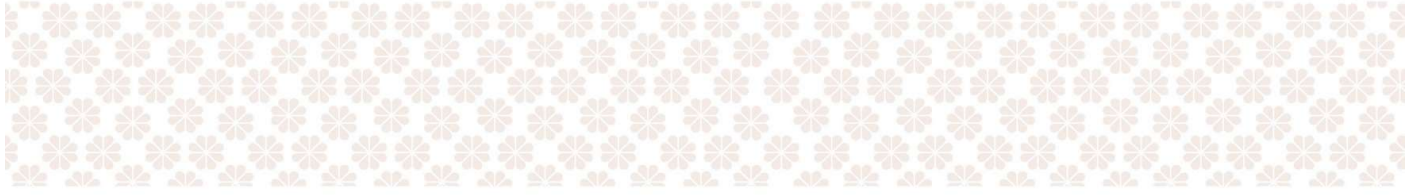
Rajpath™  
*The Way Of Style*  
Tissue Silk



E L E G A N C E

"Don't be into trends. Don't make fashion own you, but you decide what you are, what you want to express by the way you dress and the way to live."





**Rajpath**<sup>TM</sup>  
*The Way Of Style*  
Tissue Silk

G L A M O U R

"Don't be into trends. Don't make fashion own you, but you decide what you are, what you want to express by the way you dress and the way to live."



I N N O V T I V E



"Don't be into trends. Don't make fashion own you, but you decide what you are, what you want to express by the way you saree and the way to live."



U N I Q U E D E S I G N

"Don't be into trends. Don't make fashion own you, but you decide what you are, what you want to express by the way you saree and the way to live."



Rajpath™  
*the art of style*

Tissue Silk

562





Rajpath™  
*The Way Of Style*  
Tissue Silk



P A S S I O N

"Don't be into trends. Don't make fashion own you, but you decide what you are, what you want to express by the way you dress and the way to live."



Rajpath™  
*The Way Of Style*  
Tissue Silk



S I M P L I C I T Y

"Don't be into trends. Don't make fashion own you, but you decide what you are, what you want to express by the way you saree and the way to live."



Rajpath™  
*new things in style*

Tissue Silk

561





S I M P L I C I T Y

"Don't be into trends. Don't make fashion own you, but you decide what you are, what you want to express by the way you saree and the way to live."



A woman is standing in a studio setting, wearing a light pink saree with a grey border and a grey blouse. She is adorned with large, ornate earrings, a ring, and a bracelet. The background is a warm, textured orange wall. The saree has a subtle sheen and a decorative border with small pink tassels at the end.

Rajpath™  
*The Way Of Style*

Tissue Silk

560



Rajpath™  
*The Way Of Style*  
Tissue Silk



Rajpath™  
*The Way Of Style*

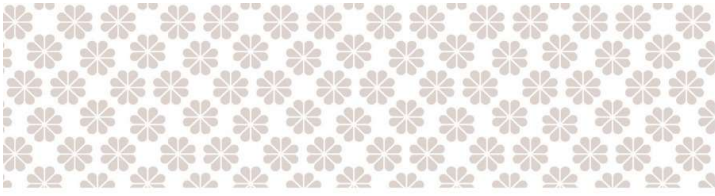
# Anvika Light Edition



P A S S I O N



"Don't be into trends. Don't make fashion own you, but you decide what you are, what you want to express by the way you saree and the way to live."



---

— G R A C E F U L —

---



"Don't be into trends. Don't make fashion own you, but you decide what you are, what you want to express by the way you saree and the way to live."