

A woman with long, wavy brown hair is wearing a bright yellow, long-sleeved dress with intricate gold and green embroidery. The dress features a V-neckline with a striped inner lining and a wide, flowing sleeve with a decorative border. The background is a soft-focus outdoor setting with greenery and a white structure.

Alzohaib™

Aziza  
Vol-2



 Alzohaib™

AZ-1533-A  
COTTON DUPATTA





 Alzohaib™

**AZ-1554**  
**COTTON DUPATTA**





 Alzohaib™

**AZ-1553**  
**COTTON DUPATTA**



Alzohaib



Alzohaib

AZ-103-A

COTTON OR PAKS

Alzohaib



Alzohaib

AZ-1554  
CHIFON DU PATA

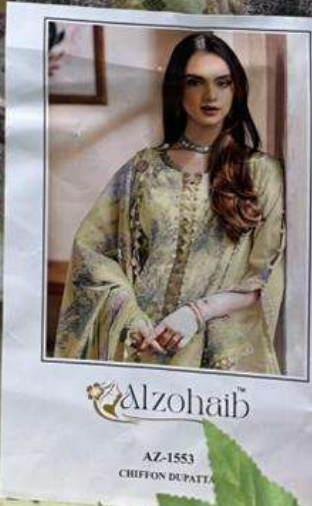
A woman with long, wavy brown hair is shown from the waist up, wearing a vibrant yellow, long-sleeved dress with intricate gold and green embroidery. The dress features a V-neckline with a striped inner lining and a wide, flowing sleeve with a decorative border. The background is a soft-focus outdoor setting with greenery and a brick wall.

Alzohaib™

Aziza  
Vol-2



Alzohaib



Alzohaib

AZ-1553  
CHIFFON DUPATTA



Alzohairb



Alzohairb

AZ-1533-B

CUSTOM DRESS



AZ-1533-A



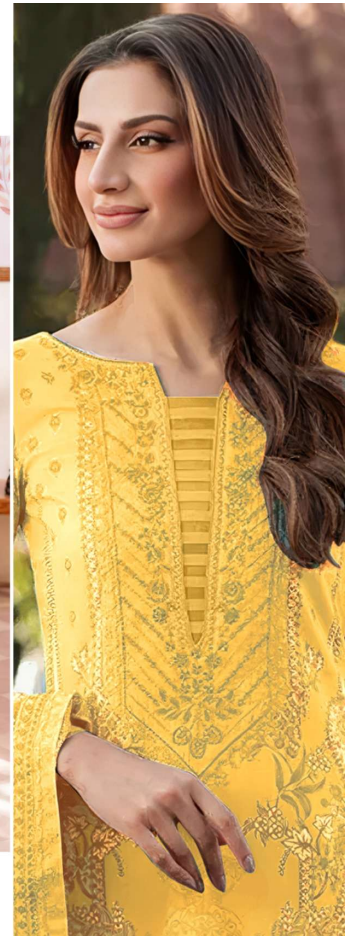
AZ-1533-B

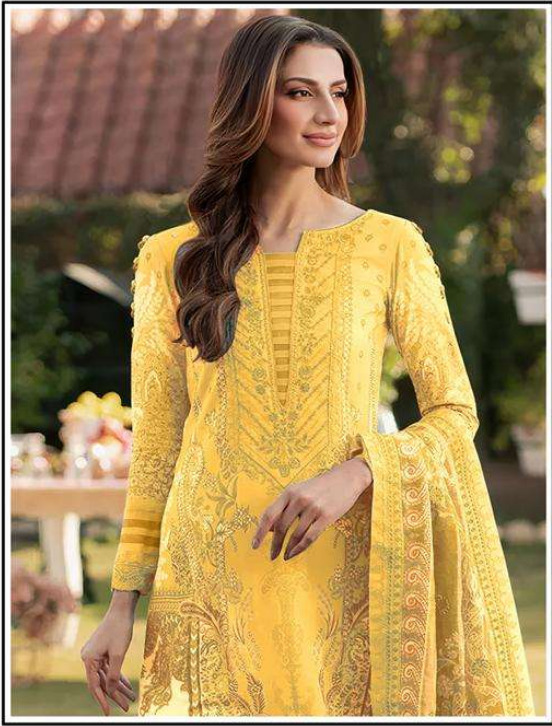


AZ-1553



AZ-1554





 Alzohaib™

AZ-1533-B  
COTTON DUPATTA

